

**Project Number: 240190**

**PID #: 113174**

**Contract ID: VIN113174**

**DBE Goal: 7.0%**

Vinton

US 50-28.74

E220(457)

CULVERT REPLACEMENT

Percentage of project Bidder must possess Work Types, and Perform Work: 50

**THE 2023 CONSTRUCTION AND MATERIAL SPECIFICATION BOOK IS PART OF THE BIDDING DOCUMENTS ON THIS PROJECT**

# **PROPOSAL**

**STATE OF OHIO**

**DEPARTMENT OF TRANSPORTATION**

Jack Marchbanks, Director

\_\_\_\_\_  
**March 21, 2024**  
\_\_\_\_\_

Submitted by \_\_\_\_\_

Bidder Id \_\_\_\_\_

TABLE OF CONTENTS

PN 019 – 01/20/2016 - PREPARATION OF PROPOSAL..... 2

PN 007 – 7/16/2021 – DISADVANTAGED BUSINESS ENTERPRISE (DBE) TRUCKING; DBE MATERIALS AND SUPPLIES VENDORS (MSVS)..... 3

PN 033 - 04/18/2008 - AS PER PLAN DESIGNATION - PROPOSAL NOTE..... 7

PN 038 - 10/15/2004 - UNRESOLVED FINDING FOR RECOVERY ..... 7

PN 039 - 10/15/2004 - ASSIGNMENT OF ANTITRUST CLAIMS IN STATE CONTRACT LANGUAGE..... 7

PN 015 – 04/17/2020 - CONTRACT PROVISIONS FOR FEDERAL-AID CONSTRUCTION CONTRACTS ..... 8

PN 017 - 10/15/2004 -FEDERALLY REQUIRED EEO CERTIFICATION CLAUSE ..... 8

PN 020- 4/15/2022- NOTICE OF REQUIREMENT OF AFFIRMATIVE ACTION TO ENSURE EQUAL EMPLOYMENT OPPORTUNITY AND WORKFORCE DIVERSITY REQUIREMENTS ON ALL ODOT ADMINISTERED FEDERALLY FUNDED PROJECTS..... 9

PN 029 – 01/20/2023– ON THE JOB TRAINING (OJT) PROVISIONS .....18

PN 026 - 10/15/2004 - CERTIFICATION OF NONSEGREGATED FACILITIES .....20

PN 031 – 07/21/2023 - PROMPT PAYMENT - ODOT-LET CONSTRUCTION PROJECTS .....21

PN 046 - 10/15/2004 - SUBCONTRACT AGREEMENTS .....26

PN 013 – 10/20/2023 - DISADVANTAGED BUSINESS ENTERPRISE (DBE) UTILIZATION PLAN AND GOOD FAITH EFFORTS .....26

PN 090 - 01/15/2021 - WORK TYPE CODES AND DESCRIPTIONS .....32

PN 059 - 10/15/2004 - WAGE DETERMINATION APPEALS PROCESS.....33

PN 061 – 01/20/2016 -WAGE SCALE ON ALL FEDERAL-AID PROJECTS .....34

PN 050 - 10/15/2004 - LIMITATION ON USE OF CONTRACT FUNDS FOR LOBBYING .....35

PN 045 - 10/15/2004 - NON - COLLUSION AFFIDAVIT .....35

PN 133 – 10/20/2023 – PRODUCTS MADE IN THE UNITED STATES .....36

PN 040 – 05/30/23 - PROHIBITION OF THE EXPENDITURE OF PUBLIC FUNDS FOR OFFSHORE PURPOSES .....38

PN 034 – 07/21/2023 – SUPPLEMENTAL SPECIFICATION 832 COMPENSATION .....41

## **PN 019 – 01/20/2016 - PREPARATION OF PROPOSAL**

### **ELECTRONIC BIDDING REQUIREMENTS**

The Department uses the Bid Express website (<http://www.bidx.com>) as an official repository for electronic bid submittal. Bidders must prepare their bids electronically using Project Bids and submitted via Bid Express.

The Department will not accept handwritten bids or bids generated electronically from software other than that used and supplied by the Department. All handwritten bids and bids generated electronically from software other than that used and supplied by the Department shall be considered non-responsive and ineligible for award. The Department will only accept and consider bids that have been produced using Project Bids and submitted via Bid Express.

The Department's Office of Contracts will provide planholders with a proposal, plan set and any required addenda. Most addenda will not be provided by hard copy, but will be available on the Office of Contracts website at: <http://contracts.dot.state.oh.us>. Planholders will be notified of all addenda via email. All proposals, plans, Project Bids (EBSX) files and addenda are also available on the Office of Contracts web site.

Electronic bids must comply with all special provisions, the Construction and Material Specifications, Supplemental Specifications and the rules and regulations of the Ohio Department of Transportation regarding bid preparation and bid submittal.

Blank unit prices will be considered an invalid bid EXCEPT in the case of optional designs (projects where the bidder is required to bid on only one design). Unit prices of zero are not permitted at any time.

Addenda and/or amendments must be acknowledged in the Bid Acknowledgement section of the Project Bids (EBSX) file in order for your bid to be considered for award of this project. The section contains the certification of receipt of all hard copy proposals, addenda, amendments, plans, standard specifications and supplemental specifications. Supplemental Questionnaire information regarding the bidder's outstanding ODOT and non-ODOT work have also been included in this section. Bid Express will not accept bids that do not have amendments incorporated. Failure to incorporate changed quantities or items in your Project Bids (EBSX) submissions will result in the rejection of your bid.

Each bidder is required to file with his bid a certified check or cashier's check for an amount equal to five percent (5%) of its bid, but in no event more than fifty thousand dollars, or a bid bond for ten percent (10%) of its bid payable to the "Director of Transportation." Electronic bid bonds will be verified upon submission of bids through Bid Express. Bidders must obtain and verify a Bond ID number from the surety. This Bond ID must be entered in the "Bond ID Number" field in the Bid Bond Section of the Project Bids file.

If the contractor chooses to submit a certified check to guaranty its bid, the Department's Office of Contracts will accept a check up to 72 hours in advance of the letting. The Office of Contracts must receive the certified check by 10:00 a.m. on the day the project sells. All checks must be sent to ODOT, Office of Contracts, Attention: Letting Manager, First Floor, 1980 W. Broad St., Columbus, Ohio 43223.

The successful bidder must furnish a performance bond and a payment bond in an amount equal to one hundred percent (100%) of the awarded contract amount. (Ohio Revised Code Section 5525.16)

Any bid received after 10:00 a.m. on the scheduled day of opening will receive no further consideration for award. The Department will not be responsible for a late bid due to failure of the bidder to allow sufficient time for delivery of the bid.

The Department will ensure that this electronic bid depository is available for a two-hour period prior to the deadline for submission of bids. In the case of disruption of national communications or loss of services by <http://www.bidx.com> during this two-hour period, the Department will delay the deadline for bid submissions to ensure the ability of potential bidders to submit bids. If this occurs, instructions will be communicated to potential bidders.

**PN 007 - 7/16/2021 - DISADVANTAGED BUSINESS ENTERPRISE (DBE) TRUCKING; DBE MATERIALS AND SUPPLIES VENDORS (MSVs)**

**COUNTING DBE TRUCKING TOWARDS DBE CONTRACT GOALS**

The Apparent Low Bidder/Awarded Contractor may meet a Disadvantaged Business Enterprise (DBE) contract goal using DBE trucking firms, but only when such firms perform a commercially useful function (CUF). The Bidder/Apparent Low Bidder/Awarded Contractor must not include a DBE trucking firm on its DBE Utilization Plan if it is aware that the firm will not be performing a CUF. Even if a DBE trucking firm will be performing a CUF, the dollar amount of trucking services it provides may not be fully countable towards the DBE contract goal. When including a DBE trucking firm that will be performing a CUF on its DBE Utilization Plan, the Bidder/Apparent Low Bidder/Awarded Contractor must only include the portion of the dollar amount of which it is aware will count towards the DBE contract goal.

The Apparent Low Bidder/Awarded Contractor is responsible for performing any Good Faith Efforts (GFEs) that may be necessary if it includes, in good faith, a DBE trucking firm on its DBE Utilization Plan and the Apparent Low Bidder/Awarded Contractor becomes aware (or is made aware) that the DBE trucking firm is not performing a CUF or that the trucking services provided by the DBE trucking firm are not countable to the extent previously believed.

A DBE trucking firm performs a CUF *only when*:

- It provided the Bidder/Apparent Low Bidder/Awarded Contractor with a quote. The DBE trucking firm must be given the opportunity to negotiate its rates.
- It is responsible for the management and supervision of its entire trucking operation, including any valid arrangement(s) (as described below) in which its services are countable towards the DBE contract goal. The extent of the DBE trucking firm's management and supervision are considered on a case-by-case basis. The existence of a contract between the Awarded Contractor and the DBE trucking firm is not in and of itself an indicator that the DBE trucking firm is performing a CUF, especially if the contract exists for the mere purpose of creating the appearance of DBE participation.
- It must own and operate at least one fully licensed, properly insured, and operational truck used on the contract.

When a DBE trucking firm performs a CUF, the dollar amount of trucking services it provides counts towards the DBE contract goal *only in instances meeting at least one of the following criteria*:

- It provides trucking services using trucks it owns, properly insures, and operates using drivers it employs (i.e., that are not 1099 “employees”/independent contractors).

It provides trucking services with trucks that are leased on a long-term basis (i.e., one year or more) from a non-DBE truck leasing company, properly insured, and operated by drivers it employs.

The dollar amount of trucking services provided using leased trucks will only be countable in cases where all the following circumstances apply:

- The DBE trucking firm’s lease indicates that the DBE trucking firm has exclusive use of and control over the leased truck(s), including responsibility for maintenance and insurance. This does not preclude the leased truck(s) from working for others during the term of the lease with the DBE trucking firm’s consent, as long as the lease gives the DBE trucking firm absolute priority for use of the leased truck(s).
- The leased trucks display the DBE trucking firm’s name and federal identification number.
- The leased truck(s), when onsite, carry a copy of the lease agreement.

#### **DBE TRUCKING DISCLOSURE AFFIDAVITS**

In order to ensure that Prime Contractors are monitoring DBE trucking/hauling operations on projects with federal funding, prime contractors must complete monthly DBE Trucking Disclosure Affidavits (“Affidavits”). An Affidavit must be completed for all DBE trucking/hauling operations, regardless of whether the work is counting towards a DBE contract goal. The Affidavit will be completed by the Prime Contractor and emailed to the District Contractor Compliance Officer (CCO) by the 10<sup>th</sup> of each month. This information will be used to affirm DBE and non-DBE trucking utilized by each DBE firm performing those duties during the previous month.

ODOT will monitor trucking with the following requirements for all ODOT-let projects:

1. Prime Contractors will be required to provide a master list of trucks for all anticipated DBE trucking firms to the CCO within seven (7) days of the Pre-Construction Meeting.

Note: If no DBE trucking is anticipated on a project, the Prime will complete the “No Anticipated DBE Trucking Affidavit” and submit it to the CCO within seven (7) days of the Pre-Construction Meeting. If DBE trucking/hauling does occur, the Prime must notify the CCO within seven (7) days of the DBE trucking activity. The Prime will then complete the monthly Affidavits as required below.

2. The CCO will email the Affidavit to the Prime, along with the Pre-Construction documentation. Prime Contractors will be required to complete the Affidavit disclosing the DBE trucking operations during the previous month. The Prime will return the Affidavit by the 10<sup>th</sup> day of each month (if the 10<sup>th</sup> day falls on a weekend, the deadline moves to the following Monday).

They will select one of the following options on the Affidavit:

- The DBE firm performed trucking by utilizing their own equipment and workforce and/or work was subcontracted to another DBE (i.e. only trucking that can be counted for DBE participation was utilized).

Note: No other information is required. The Prime will sign and submit the Affidavit.

- The DBE firm utilized DBE & Non-DBE trucking.

Note: If selected, the Prime will provide a list of Non-DBE trucking that was utilized (i.e., not all trucking will earn DBE credit).

- No trucking was performed.

Note: No other information is required. The Prime will sign and submit the Affidavit.

3. Trucking will continue to be monitored at project sites by construction field staff and the CCOs.

### **SANCTIONS AND ADMINISTRATIVE REMEDIES**

Failure by the prime contractor to follow the DBE Trucking Disclosure Affidavit requirements may result in the issuance of sanctions as follows:

- 1st Level Occurrence: The Administrator for the Office of Civil Rights Compliance, under the Division of Opportunity, Diversity & Inclusion (ODI), will issue a Letter of Reprimand to the contractor (applies if there is a failure to submit the Affidavits and/or the Affidavits are not submitted timely; if the prime completes the No Anticipated DBE Trucking Affidavit, utilizes DBE trucking and does not notify the CCO within seven days of the activity);
- 2nd Level Occurrence: ODI may withhold an estimate in the amount due to the DBE trucking firm(s) that the Affidavit was not submitted for (applies if there is a failure to submit the Affidavits and/or the Affidavits are not submitted timely; if the prime completes the No Anticipated DBE Trucking Affidavit, utilizes DBE trucking and does not notify the CCO within seven days of the activity );
- 3rd Level Occurrence: If a pattern of not submitting the Affidavit(s) persists or the Contractor has falsified, misrepresented or withheld information, ODOT can pursue other remedies available by law including suspension, revocation, and/or debarment.

Factors to be considered in issuing sanctions may include, but are not limited to the following:

- the Contractor's past project practices;
- the magnitude and the type of offense;
- the degree of the Contractor's culpability;
- any steps taken to rectify;
- the Contractor's record of performance on other projects; and
- the number of times the Contractor has been previously sanctioned by ODOT.

### **COUNTING MATERIALS AND SUPPLIES PURCHASES FROM DBE MATERIALS AND SUPPLIES VENDORS (MSVS)**

The DBE MSV Directory is available within the Ohio Unified DBE Directory at <http://www.dot.state.oh.us/Divisions/ODI/SDBE/Pages/DBE-Directory.aspx> (select MSV only).

The Apparent Low Bidder/Awarded Contractor may meet a Disadvantaged Business Enterprise (DBE) contract goal using DBE MSVs. The dollar amount of materials or supplies purchased from a DBE MSV will usually not be fully countable towards the DBE contract goal. When including a DBE MSV on its DBE Utilization Plan, the Bidder/Apparent Low Bidder/Awarded Contractor must only include the portion of the dollar amount of which it is aware will count towards the DBE contract goal.

The Apparent Low Bidder/Awarded Contractor is responsible for performing any Good Faith Efforts (GFEs) that may be necessary if it includes, in good faith, a DBE MSV on its DBE Utilization Plan and the Apparent Low Bidder/Awarded Contractor becomes aware (or is made aware) that the materials or supplies purchased from the DBE MSV are not countable to the extent previously believed.

The Bidder/Apparent Low Bidder/Awarded Contractor must seek information from DBE MSVs to allow it to be sufficiently informed about the nature of the transaction and which scenario listed below applies. The Apparent Low Bidder/Awarded Contractor must document this information on the DBE Affirmation Form (<https://www.transportation.ohio.gov/wps/portal/gov/odot/programs/business-economic-opportunity/dbe/dbe-resources/pn-013-affirmation>).

## DBE MSV COUNTING SCENARIOS

- The purchase price of materials and supplies obtained from a DBE MSV may be *fully countable* only if the DBE MSV:
  - Manufactures the item(s), as indicated by the information provided by the DBE MSV (subject to verification by the Department). A manufacturer DBE MSV is a firm that operates or maintains a factory or establishment that produces, on the premises, the materials, supplies, articles, or equipment required under the contract and of the general character described by the specifications;
  - Is certified in the correct (manufacturer) NAICS code(s) for the item(s); and
  - Is certified in the correct MSV descriptor(s) for the item(s), if its manufacturing facility is located in Ohio.
  
- The purchase price of materials and supplies obtained from a DBE MSV may be *countable at 60%* only if the DBE MSV:
  - Does not manufacture the item(s);
  - Owns, operates, or maintains a store, warehouse, or other establishment in which item(s) of the general character described by the specifications and required under the contract are bought, kept in stock, and regularly sold or leased to the public in the usual course of business, as indicated by the information provided by the DBE MSV (subject to verification by the Department) (See below for an exception to this requirement for items that are considered bulk items.);
  - Is an established, regular business that engages, as its principal business and under its own name, in the purchase and sale or lease of the item(s);
  - Is certified in the correct (wholesale or retail) NAICS code(s) for the item(s);
  - Is certified in the correct MSV descriptor(s) for the item(s), if its store/warehouse/other establishment is located in Ohio; and
  - Does not drop-ship the item(s).
  
- The purchase price of materials and supplies that are considered bulk items (petroleum products, steel, cement, gravel, stone, asphalt, and others that ODOT may consider to be bulk items) and are obtained from a DBE MSV may be *countable at 60%* only if the DBE MSV:
  - Delivers the item(s) using distribution equipment that it both owns (or for which it has a long-term (1 year or more) lease) and operates with its regular (not ad hoc) employees,

as indicated by the information provided by the DBE MSV (subject to verification by the Department);

- Is an established, regular business that engages, as its principal business and under its own name, in the purchase and sale of the item(s);
  - Is certified in the correct (wholesale or retail) NAICS code(s) for the item(s);
  - Is certified in the correct MSV descriptor(s) for the item(s), if located in Ohio;
  - Is certified in the correct trucking NAICS code(s); and
  - Does not drop-ship the item(s).
- The purchase price of materials and supplies obtained from a DBE MSV but not in accordance with any of the above scenarios is not countable, but the fees or commissions charged by the DBE MSV are countable if the DBE MSV:
    - Is certified in NAICS code 425120 Wholesale Trade Agents and Brokers; and
    - Convincingly explains how the Bidder/Apparent Low Bidder/Awarded Contractor benefits by transacting business with it rather than directly with the non-DBE vendor from which the DBE MSV is re-selling.

All credit toward DBE goals is conditional. Actual credit will be determined based upon invoices, receipts, and/or transportation documents/bills of lading, which must be submitted to ODOT as they are received throughout the course of the project.

#### **PN 033 - 04/18/2008 - AS PER PLAN DESIGNATION - PROPOSAL NOTE**

For the last several years the “As Per Plan” designation has been added to some item descriptions in the proposal to assist the Contractors to easily identify standard items that have been altered by plan notes.

The “As Per Plan” designation has proven to be a very useful tool for the Contractors. However, its use was never intended to relieve the Contractors of their responsibility to read, bid and construct all items in accordance with all governing plan notes. Therefore, the absence of an “As Per Plan” designation on some item descriptions in the proposal for which there are clear and controlling plan notes does not relieve the Contractors of the responsibility to read, bid and construct those particular items in accordance with the governing plan notes.

Be advised that the item descriptions in the bidding proposal must be read or interpreted with the governing plan notes and the Ohio Department of Transportation Construction and Materials Specifications. A claim based upon an “order of precedence” basis will be denied. In the event that a conflict, either real or perceived, exists between the item description and the governing plan note, the Contractors are to request clarification through the pre-bid process.

#### **PN 038 - 10/15/2004 - UNRESOLVED FINDING FOR RECOVERY**

The Contractor affirmatively represents to the Department that it is not subject to a finding for recovery under Ohio Revised Code §9.24, or that it has taken the appropriate remedial steps required under §9.24 or otherwise qualifies under that section. The Contractor agrees that if this representation is deemed to be false, the contract shall be void ab initio as between the parties to this contract, and any funds paid by the state hereunder shall be immediately repaid to the Department, or an action for recovery may be immediately commenced by the Department for recovery of said funds.

#### **PN 039 - 10/15/2004 - ASSIGNMENT OF ANTITRUST CLAIMS IN STATE CONTRACT LANGUAGE**



It is the policy of the Ohio Department of Transportation that ODOT and the Contractor recognize that in actual economic practice, overcharges resulting from antitrust violations are usually borne by ODOT. As consideration for the Award of the Contract and intent to be legally bound, the Contractor acting herein by and through the person signing this contract on behalf of the Contractor as a duly authorized agent, hereby assigns, sells, conveys, and transfers to ODOT any and all right, title and interest to any and all claims and causes of action the Contractor now has or hereafter requires under state or federal antitrust laws provided that the claims or causes of action related to the goods or services that are the subject to the contract. In addition, the Contractor warrants and represents that it will require any and all of its subcontractors and first tier suppliers to assign any and all federal and state antitrust claims and causes of action to ODOT. The provisions of this article shall become effective at the time ODOT executes this contract without further acknowledgment by any of the parties.

All contracting entities shall assign their rights and responsibilities to ODOT for all antitrust claims and causes of action regarding subcontractors.

#### **PN 015 – 04/17/2020 - CONTRACT PROVISIONS FOR FEDERAL-AID CONSTRUCTION CONTRACTS**

The required contract provisions for federal-aid construction contracts (contained in Form FHWA 1273 revised October 23, 2023 and located [here](#)) are hereby incorporated by reference as if rewritten herein. Form FHWA-1273 shall be physically incorporated in all contracts, subcontracts and lower-tier subcontracts (excluding purchase orders, rental agreements and other agreement for supplies or services related to a construction contract). The prime contractor shall be responsible for ensuring that the FHWA-1273 is physically incorporated into all lower-tier subcontracts.

#### **SANCTIONS AND ADMINISTRATIVE REMEDIES**

Failure by the prime contractor to include the provisions of FHWA-1273 in their contract or in their lower-tier subcontracts may result in the issuance of sanctions as follows:

1 st Tier: Letter of Reprimand

2 nd Tier: Damages equivalent to the daily liquidated damages amount found in section 108.07 for each incident of non-compliance

3 rd Tier: If a pattern of paying damages persists or the Contractor has falsified, misrepresented or withheld information, ODOT can pursue other remedies available by law including suspension, revocation, and/or debarment.

Factors to be considered in issuing sanctions may include, but are not limited to the following:

- the magnitude and the type of offense;
- the degree of the Contractor's culpability;
- any steps taken to rectify; and
- the Contractor's record of performance on other projects
- the number of times the Contractor has been previously sanctioned by ODOT.

#### **PN 017 - 10/15/2004 - FEDERALLY REQUIRED EEO CERTIFICATION CLAUSE**

The Federally Required EEO Certification is required by the Equal Employment Opportunity Regulations of the Secretary of Labor (41 CFR 60-1.7 (b) (1)), and must be submitted by bidders and proposed subcontractors only in connection with contracts and subcontractors which are subject to the equal opportunity clause. Contracts and subcontracts which are exempt from the equal opportunity clause are set forth in 41 CFR 60-1.5. (Generally only contracts or subcontracts of \$10,000 or under are exempt.)

Currently, Standard Form 100 (EEO-1) is the only report required by the Executive Orders or their implementing regulations.

Proposed prime contractors and subcontractors who have participated in a previous contract or subcontract subject to the Executive Orders and have not filed the required reports should note that 41 CFR 60-1.7 (b) (1) prevents the award of contracts and subcontracts unless such contractor submits a report covering the delinquent period or such other period specified by the Federal Highway Administration or by the Director, Office of Federal Contract Compliance, U.S. Department of Labor.

**PN 020- 4/15/2022- NOTICE OF REQUIREMENT OF AFFIRMATIVE ACTION TO ENSURE EQUAL EMPLOYMENT OPPORTUNITY AND WORKFORCE DIVERSITY REQUIREMENTS ON ALL ODOT ADMINISTERED FEDERALLY FUNDED PROJECTS**

The Bidder's attention is called to the affirmative action obligations required by the specifications set forth in 23 CFR Part 230, 41 CFR Part 60, Executive Order 11246, Section 503, and the affirmative action provisions of Vietnam Era Veterans' Readjustment Assistance Act (VEVRAA) of 1974.

**Workforce Utilization Goals**

Utilization goals applicable to the project, expressed in percentages, for minority and female participation for each construction craft can be found on ODOT's website. These goals are based on 2010 census data and represent the area, per craft, minority and female availability pool.

- **Census Availability Percentages for minority and female workers** by craft per county (applicable to project):

<http://www.dot.state.oh.us/Divisions/ContractAdmin/Contracts/Construction/CensusForAllCounties.xlsx>

<http://www.dot.state.oh.us/Divisions/ContractAdmin/Contracts/Construction/CensusForAllCounties.pdf>

- **Statewide utilization obligations/ goals for minority workers** by county (applicable to each project).
- **Statewide utilization obligation/ goal for female workers is 6.9%** and applies the same for each county.

**Source: US Department of Labor's, Office of Federal Contract Compliance Programs, Technical Assistance Guide for Construction Contractors (pp. 126 – 127)**  
[Construction Contractors Technical Assistance Guide \(dol.gov\)](#)

Ohio 064 Youngstown-Warren, OH:

SMSA (Standard Metropolitan Statistical Area) Counties:

9320 Youngstown - Warren, OH \_\_\_\_\_ 9.4  
OH Mahoning; OH Trumbull.

Non-SMSA Counties \_\_\_\_\_ 6.7  
OH Columbiana; PA Lawrence; PA Mercer.

065 Cleveland, OH:

SMSA Counties:

0080 Akron, OH \_\_\_\_\_ 7.8  
OH Portage; OH Summit.

1320 Canton, OH \_\_\_\_\_ 6.1  
OH Carroll; OH Stark.

1680 Cleveland, OH \_\_\_\_\_ 16.1

10  
Project No. 240190

OH Cuyahoga; OH Geauga; OH Lake; OH Medina.	
4440 Lorain-Elyria, OH _____	9.3
OH Lorain.	
4800 Mansfield, OH _____	6.3
OH Richland.	
Non-SMSA Counties: _____	11.3
OH Ashland; OH Ashtabula; OH Coshocton; OH Crawford; OH Erie; OH Holmes; OH Huron; OH Tuscarawas; OH Wayne.	
066 Columbus, OH:	
SMSA Counties:	
1840 Columbus, OH _____	10.6
OH Delaware; OH Fairfield; Franklin; OH Madison; OH Pickaway.	
Non-SMSA Counties _____	7.3
OH Athens; OH Fayette; OH Guernsey; OH Hocking; OH Jackson; OH Knox; OH Licking; OH Marion; OH Meigs; OH Morgan; OH Morrow; OH Muskingum; OH Noble; OH Perry; OH Pike; OH Ross; OH Scioto; OH Union; OH Vinton.	
067 Cincinnati, OH:	
SMSA Counties:	
1640 Cincinnati, OH-KY-IN _____	11.0
IN Dearborn; KY Boone; KY Campbell; KY Kenton; OH Clermont; OH Hamilton; OH Warren.	
3200 Hamilton - Middletown, OH _____	5.0
OH Butler.	
Non-SMSA Counties _____	9.2
IN Franklin; IN Ohio; IN Ripley; IN Switzerland; KY Bracken; KY Carroll; KY Fleming; KY Gallatin; KY Grant; KY Lewis; KY Mason; KY Owen; KY Pendleton; KY Robertson; OH Adams; OH Brown; OH Clinton; OH Highland.	
068 Dayton, OH:	
SMSA Counties:	
2000 Dayton, OH _____	11.5
OH Greene; ON Miami; OH Montgomery; OH Preble.	
7960 Springfield, OH _____	7.8
OH Champaign; OH Clark.	
Non-SMSA Counties _____	9.9
OH Darke; OH Logan; ON Shelby.	
069 Lima, OH:	
SMSA Counties:	
4320 Lima, OH _____	4.4
OH Allen; OH Auglaize; OH Putnam; OH Van Wert.	
Non-SMSA Counties _____	3.5
OH Hardin; OH Mercer.	
070 Toledo, OH:	
SMSA Counties:	
8400 Toledo, OH-MI _____	8.8
MI Monroe; OH Fulton; OH Lucas; OH Ottawa; OH Wood.	
Non-SMSA Counties _____	7.3
MI Lenawee; OH Hancock; OH Henry; OH Sandusky; OH Seneca; OH Wyandot.	

**The New Hire Definition for the purposes of on-the-job training and workforce utilization is as follows:**

An individual who has a break in service (not on an employer's payroll) for a period of 12 months or longer and the person affected is not a salaried employee but belongs to a union craft. Individuals compensated for training or incidental work which does not cause a break in unemployment compensation, i.e., paid by voucher check or petty cash, are considered new hires if the individual's break in service is 12 months or longer.

The time frame for a new hire shall be associated with the first project worked for that contractor regardless of whether it is public or private. When reporting a newly hired employee, the contractor shall identify that employee as a new hire on that specific project only. Subsequent work, barring a break in service of 12 months or more, would not qualify the employee as a new hire for that contractor.

**Compliance:** The Contractor's compliance shall be based on the implementation of affirmative action obligations required by the specifications set forth in 23 CFR Part 230, and its good faith efforts to meet these obligations. The hours of minority and female employment and training must be substantially uniform throughout the length of the contract, and in each trade, and the Contractor shall make a good faith effort to employ minorities and females on each of its projects. The transfer of minority or female employees or trainees from Contractor to Contractor or from project to project for the sole purpose of meeting the affirmative action obligations shall be a violation of the contract and regulations in 23 CFR Part 230. The good faith efforts put forth by the contractor will be measured against the total work hours performed.

Under FHWA, ODOT is the authority tasked with ensuring that the contractor adheres to the aforementioned regulations. In addition to complying with the Required Contract Provisions, the Contractor shall provide immediate written notification to ODOT when referral practices of the union(s) with which the Contractor has a collective bargaining agreement impede the company's efforts to meet its equal opportunity obligations.

The U.S. Department of Labor, Office of Federal Contract Compliance Programs (OFCCP), administers and enforces equal employment opportunity laws that apply to Federal government contractors and subcontractors supplying goods and services, including construction, to the Federal Government under 41 CFR Part 60, Executive Order 11246, Section 503, and the affirmative action provisions of VEVRAA. The OFCCP monitors compliance with these laws primarily through compliance evaluations, during which a compliance officer examines the contractor's affirmative action efforts and employment practices. Under Executive Order 11246, the OFCCP may perform contract compliance reviews on contractors involved with federally funded ODOT projects.

Requirements for affirmative action obligations governing OFCCP contract compliance reviews are those listed in the Federal Register for the Economic Area.

[Federal Register :: Government Contractors, Affirmative Action Requirements \(2000\)](#)

[Federal Register :: RIN 1250-AA10 \(2020 updates\)](#)

**Additional requirements for ODOT projects with state funding**

The Ohio Department of Development (ODOD), Minority Business Division, is responsible for ensuring state contractors implement and adhere to the State of Ohio's affirmative action program pursuant to [Ohio Administrative Code \(OAC\) 123: Chapters 123:2-3-01 through 123:2-3-07](#). Specifically, this unit's responsibilities includes the issuance of certificates of compliance under [ORC 9.47](#) and [153.08](#), conducting project site visits, and compliance reviews (desk audits) to ensure contractors utilize minorities

and women in the construction trades, and maintain a working environment free of discrimination, harassment, and intimidation. The ODOT may perform contract compliance reviews on contractors involved with state or state assisted projects. Requirements for affirmative action obligations governing ODOT contract compliance reviews are those listed in OAC 123:2-3-02, for the Metropolitan Statistical Area in which a project is located.

All prime and subcontractors regardless on the number of employees or the state contract amount are required to submit monthly utilization reports (Input Form 29) to the Ohio Department of Development covering the contractor's total workforce within the state of Ohio (private sector and public sector projects). The reports must be filed electronically by the 10th of each month, beginning with the contract award and continuing until the contractor or subcontractor completes performance of the contract, as set forth in OAC 123:2-9-01.

I-29 monthly reports must be submitted via the Ohio Business Gateway portal: <https://ohio.gov/wps/portal/gov/site/business/resources/ohio-business-gateway> / [Ohio Business Gateway | Ohio.gov | Official Website of the State of Ohio](#)

*Steps to Submit the I-29 Form:*

1. Visit [Ohio Business Gateway](#)
2. Log in using username and password (OH|ID)
3. Ensure "Equal Opportunity Division" is among available service areas
4. Ensure "Input 29" is among available transactions
5. Select "Input 29" and complete the form
6. Click "File" button on the Summary page to see a confirmation page
7. Submit supporting documentation (if required) to: [das-eod.bccu@das.ohio.gov](mailto:das-eod.bccu@das.ohio.gov)

I-29 reports are used by ODOT to create monthly utilization work hour reports to monitor adherence to on-the-job training requirements and workforce diversity requirements. Prime Contractors and Subcontractors shall provide monthly utilization work hour reports for the contractor's or subcontractor's total workforce within the state of Ohio to the compliance officer of the contracting agency (ODOT). A contractor's or subcontractor's failure to submit a monthly utilization work hour report shall be a basis for invoking any of the sanctions set forth in rule 123:2-7-01 of the Ohio Administrative Code.

### **FEDERAL WORKFORCE DIVERSITY REQUIREMENTS**

Affirmative Action and Equal Employment Opportunity requirements apply to federal transportation projects over \$10,000 (41 CFR 60-4 and Executive Order 11246). As a part of these requirements, there are workforce goals for female and minority workers. There is a statewide goal of 6.9% for female workers on all projects over \$10,000 and the goal for minority workers varies by county. (See availability and goal information in links on page 1). **All Prime Contractors are required to meet the workforce diversity goals by the end of a project.**

ODOT will monitor the progress toward meeting these goals throughout the life of the project. The totality of the project workforce hours (including the various trades utilized) must be met and complied with by the Prime and Subcontractors. ODOT will monitor compliance using the following process:

- 1) Present quarterly reports showing the percentage of female and minority workers hired by Prime Contractors and Subcontractors on projects. The reports will be generated using certified payroll receipts entered through the AASHTOWare Civil Rights & Labor (CRL) system. These reports will be referred to as “CRL reports”;
- 2) The CRL reports will be distributed by ODOT’s ODI Division or the Project Manager at project progress meetings on a quarterly basis;
- 3) If female and/or minority workforce goals are not being met, ODOT’s ODI Division will offer a list of organizations that focus on recruiting a diverse workforce. This list can be used as a resource for the Prime Contractors, Subcontractors, and/or Unions.

A Good Faith Efforts (GFE) check list will be provided to the Prime Contractor at the end of the project. (See copy below, pp. 6-9, or on line at:

<https://www.transportation.ohio.gov/wps/portal/gov/odot/programs/eo/01-gfe-checklist>

- 4) The Contractor must complete and return the GFE check list within 30 days of receipt to the Project Manager (PM). The PM will forward the check list to the ODI Outreach Manager (OM) for review. The OM will forward the check list to ODI Outreach Administrator (OA) who will forward it to the ODI Good Faith Efforts Review Committee for final approval.
- 5) The ODI Good Faith Efforts Review Committee will determine whether the good faith efforts checklist is acceptable within 10 days of receiving the checklist from the Prime Contractor or Project Manager and will inform the Contractor of the decision.
- 6) If the GFE checklist is not acceptable, the Prime Contractor will continue to make efforts to meet the female and minority workforce goals on future projects that ODOT monitors.

ODOT staff that will be involved in determining if GFE checklists are acceptable include:

ODOT Division of Opportunity, Diversity, & Inclusion (ODI) staff	2-4
ODOT District staff (Project Manager and/or Project Engineer)	1-2
ODOT Central Office staff (Office of Construction Administration, Alternative Delivery, & Local Programs)	3

- 7) Additionally, at the end of the project, if the workforce diversity goals are not met, ODOT will meet with the Contractor to discuss efforts that the Contractor can take to meet the diversity workforce goals on the next project over \$20M awarded to the Contractor that will be monitored by ODOT. These discussion efforts will be acknowledged by ODOT and made a part of the Contractor’s overall GFE documentation.
- 8) If the Contractor does not meet the female and minority workforce goals on the next project over \$20M that ODOT monitors, a letter will be sent to the CEO of the Prime and Sub Contractors informing them of their company’s lack of progress in meeting the project’s total workforce utilization goals and inviting the CEO, or his/her representative(s), to talk with ODOT’s leadership regarding any concerns. The minutes from this meeting will be kept on file as a part of the company’s Good Faith Efforts.

### Dispute Process

During the life of the project, if there is a disagreement by the Prime Contractor with the female and/or minority workforce percentages provided in a CRL report, the Prime Contractor can make a request, through the Project Manager, to meet with ODOT ODI staff to discuss discrepancies and obtain more information regarding the process ODOT uses to produce the CRL reports.

### Good Faith Efforts Committee

The Good Faith Efforts (GFE) Committee shall be responsible for monitoring and approving the GFE Checklist and supporting documentation submitted by the Prime Contractor showing efforts made to meet the female and minority workforce goals on ODOT projects that are being monitored.

The Committee members shall be responsible for:

- 1) Working with the ODI staff to review and approve the GFE check lists submitted by the Prime Contractor and informing the Prime if the check list and documentation are approved or not.
- 2) Accessing/ Reviewing CRL reports from the SharePoint portal that shall be created by ODI staff.
- 3) Saving all GFE documentation on the Share Point portal created by the ODI Division.



**PN 20: Workforce Diversity Requirements - Good Faith Efforts (GFE) Checklist\***

***\*Please return this form and supporting documentation (when applicable) to the ODOT project manager within 30 days of receipt.***

- ❖ ODOT's Proposal Note 20 outlines the Affirmative Action and Equal Opportunity requirements for the federal and state funded transportation projects over \$10,000. As a part of these requirements, there are workforce goals for female and minority workers. ODOT is renewing its efforts to monitor these goals. There is a statewide goal of 6.9% for female workers on all projects over \$10,000 and the goal for minority workers varies by county. All Prime Contractors and Subcontractors are required to meet the goals by the end of project.
- ❖ Prime Contractors are required to complete and return this Good Faith Efforts (GFE) Checklist (including information for subcontractors when possible) as indicated above. When the GFE Checklist is received, the Project Manager and/or Regional Outreach Manager will inform the Prime Contractor(s) within 30 days if the GFE check list is approved by the GFE Review Committee and discuss additional steps that can be taken to meet the workforce diversity goals (if applicable).
- ❖ ODOT's ODI Division (Office of Outreach) will be responsible for monitoring progress toward meeting the workforce diversity goals.

[In the following sections- check all that apply, including  Prime Contractor and/or  Subcontractor(s)]

**Outreach events:**

In the past three months, the  Prime Contractor(s) /  Subcontractor(s) attended outreach/recruiting events to increase women, minorities, and disadvantaged persons in the workplace. [Please provide a copy of documentation of at least one of these outreach efforts with this form].

**Outreach contacts:**

Which agencies, professional/trade groups, job fairs, training classes, minority and women organizations, workforce development agencies were contacted by the  Prime Contractor(s) and  Subcontractor(s) in order to recruit minorities, women and disadvantaged persons in the workplace? Use additional paper if needed. Provide approximate dates and names of individuals contacted through this process.



**Current employees:**

- The  Prime Contractor(s) /  Subcontractor(s) have connected with current minority and female employees to gain referrals on other minority and female applicants.

**Company recruitment efforts:**

- The  Prime Contractor(s) /  Subcontractors maintain a database/ spreadsheet/ list of minority, female, and disadvantaged applicants who want to work at the company and applied for employment in the past. The database was utilized to contact those applicants when hiring/ employment opportunities arose. [Please provide a copy of the list with this form- without private or confidential information.]
- The aforementioned database/ list includes women and minorities referred by unions, community organizations, schools, workforce development agencies, and other recruitment sources.
- The  Prime Contractor(s) /  Subcontractors informed the aforementioned recruitment partners when employment opportunities arose.
- The  Prime Contractor(s) /  Subcontractors sought to include qualified minorities and women in any apprenticeship programs in which the contractor participates.
- The  Prime Contractor(s) /  Subcontractors have advertised in news media oriented towards women and minorities.
- The Prime Contractor(s) reached out to their subcontractor(s) to vet the subcontractors' ability to hire women and minority workers, before the project began or as the project progressed.

**Request to union hall:**

- If the  Prime Contractor(s) /  Subcontractors are unionized and did not meet the female or minority workforce goal, the union hall was informed of the short fall and a request was made to the union hall for female and minority workers.
- The  Prime Contractor(s) /  Subcontractors documented if an individual was sent to the union hiring hall for referral and was not referred back to the contractors by the union or was not hired by the contractors; and the reason why.

**The criteria ODOT will use to determine if GFEs are sufficient include the following:**

- The extent that women and minorities are available within a reasonable area of recruitment
- The potential resources for effective recruitment
- Geographic location of project
- Type of work
- Duration of the contract
- Dollar value of the contract

Feel free to attach an additional document if more space is needed to note Good Faith Efforts that have been used or will be used:

--

**Person completing this form (name, company, and title)**

***I certify that the information provided on this form and supporting documentation (when applicable) is true and correct to the best of my knowledge.***

Print Name: \_\_\_\_\_

Signature: \_\_\_\_\_

Company Name: \_\_\_\_\_

Position/Title: \_\_\_\_\_

Date: \_\_\_\_\_

**\*\* Please note that this checklist is subject to revisions over time, as updates are needed\*\***

**For office use only:** GFE Checklist approval/ denial by ODOT

Regional Outreach Manager Name _____	Project Manager Name _____
<input type="checkbox"/> Approve GFE Checklist  <input type="checkbox"/> Do not approve (request additional documentation)	<input type="checkbox"/> Approve GFE Checklist  <input type="checkbox"/> Do not approve (request additional documentation)

ODOT ODI Deputy Director Name _____ (if applicable)	ODOT ODI Administrator Name _____ (if applicable)
<input type="checkbox"/> Approve GFE Checklist  <input type="checkbox"/> Do not approve (request additional information)	<input type="checkbox"/> Approve GFE Checklist  <input type="checkbox"/> Do not approve (request additional information)

Committee Member, ODI Administrator Name _____ (if applicable)	Committee Member, Central Office Staff Name _____ (if applicable)
<input type="checkbox"/> Approve GFE Checklist  <input type="checkbox"/> Do not approve (request additional information)	<input type="checkbox"/> Approve GFE Checklist  <input type="checkbox"/> Do not approve (request additional information)

--	--

ODOT, Central Office Staff Name _____ (if applicable)	ODOT, Central Office Staff Name _____ (if applicable)
<input type="checkbox"/> Approve GFE Checklist  <input type="checkbox"/> Do not approve (request additional information)	<input type="checkbox"/> Approve GFE Checklist  <input type="checkbox"/> Do not approve (request additional information)

ODOT ODI Staff Name _____ (if applicable)	ODOT ODI Staff Name _____ (if applicable)
<input type="checkbox"/> Approve GFE Checklist  <input type="checkbox"/> Do not approve (request additional information)	<input type="checkbox"/> Approve GFE Checklist  <input type="checkbox"/> Do not approve (request additional information)

ODOT ODI Staff Name _____ (if applicable)	ODOT ODI Staff Name _____ (if applicable)
<input type="checkbox"/> Approve GFE Checklist  <input type="checkbox"/> Do not approve (request additional information)	<input type="checkbox"/> Approve GFE Checklist  <input type="checkbox"/> Do not approve (request additional information)

**PN 029 – 01/20/2023– ON THE JOB TRAINING (OJT) PROVISIONS** The primary objective of the OJT Program is to offer equal opportunity for the training and upgrading of minorities, women, and disadvantaged persons toward journeyman status in the highway construction trades, and to establish a plentiful and well diverse pool of skilled workers for the highway construction industry.

The Contractor shall adhere to all requirements of the OJT Program as set forth in the most recent version of the ODOT On the Job Training Program Plan located here [OJT+Program+Plan+2020+Final+-+12.16.2020.pdf](#) (ohio.gov) and incorporated in its entirety herein by reference.

**FHWA 1391 PROVISIONS:** The FHWA annual Equal Employment Opportunity (EEO) Report is required for all federal-aid construction contracts (as required by Form FHWA-1273 and 23 CFR Part 230, Subpart C). The annual EEO Report collects employment data, specifically highlighting employment of racial/ethnic minorities and women, from all construction contractors with active federal-aid contracts valued at \$10,000 or more (except for those contracts awarded under [23 U.S.C. 117](#)), during the

designated reporting period. Accurate reporting of data is imperative in order to maintain federal funding for future ODOT Federal-Aid Highway Construction projects.

**Records and Reports:** The contractor shall maintain records as necessary to document compliance with the EEO requirements. Such records shall be retained for a period of three years following the date of the final payment to the contractor for all contract work. These records shall be available at reasonable times and places for inspection by authorized representatives of the contracting agency and the FHWA.

a. The records kept by the contractor shall document the following:

(1) The number and work hours of minority and nonminority group members and women employed in each work classification on the project;

(2) The progress and efforts being made in cooperation with unions, when applicable, to increase employment opportunities for minorities and women; and

(3) The progress and efforts being made in locating, hiring, training, qualifying, and upgrading minorities and women.

b. The contractors and subcontractors will submit an annual report to the contracting agency each July for the duration of the project indicating the number of minority, women, and nonminority group employees currently engaged in each work classification required by the contract work. This information is to be reported on Form FHWA-1391. The staffing data should represent the project work force on board in all or any part of the last payroll period preceding the end of July. If on-the-job training is being required by special provision, the contractor will be required to collect and report training data. The employment data should reflect the work force on board during all or any part of the last payroll period preceding the end of July.

## **SANCTIONS AND ADMINISTRATIVE REMEDIES**

Failure by the prime contractor and sub-contractors to submit the provisions of FHWA-1391 by the dates provided by the administrating agency in their contract, or in their lower tier subcontracts, may result in the issuance of sanctions as follows:

1<sup>st</sup> Tier: Damages equivalent to the administrative fee's amount of (\$100/day) established in section 109.12 for each incident of non-compliance, beginning the 1<sup>st</sup> day after the deadline date established in the 2<sup>nd</sup> written request for submittal of the FHWA 1391 Report.

2<sup>nd</sup> Tier: If a pattern of occurring administrative fee's persists or the Contractor has falsified, misrepresented or withheld information, ODOT can pursue other remedies available by law including suspension, revocation, and/or debarment.

Factors to be considered in issuing sanctions may include, but are not limited to the following:

- the magnitude and the type of offense;
- the degree of the Contractor's culpability;
- any steps taken to rectify; and
- the Contractor's record of performance on other projects
- the number of times the Contractor has been previously sanctioned by ODOT.

## **SUGGESTED SUB AGREEMENT LANGUAGE – FEDERAL-AID CONTRACTS**

Suggested language for the federal-aid Prime Contractor to include in its subcontractor agreements:

As a Subcontractor, and/or trucking firm, you are contractually obligated to comply with the state administrating agency request for the submittal of the FHWA 1391 – Contractors Annual Equal

Employment Opportunity (EEO) Report. It should reflect the total employment on all Federal-Aid Highway Projects in the State as of July 31st. The staffing figures to be reported should represent the project work force on board in all or any part of the last payroll period preceding the end of July. The staffing figures to be reported in Table A should include journey-level men and women, apprentices, and on-the-job trainees. Staffing figures to be reported in Table B should include only apprentices and on-the-job trainees as indicated.

All lower-tier Subcontractor (DBE and non-DBE), and trucking firm (DBE and non-DBE) sub agreements must include this EEO reporting obligation.

#### **PN 026 - 10/15/2004 - CERTIFICATION OF NONSEGREGATED FACILITIES**

(a) A Certification of Nonsegregated Facilities, as required by the May 9, 1967, Order of the Secretary of Labor (32 F.R. 7439, May 19, 1967) on Elimination of Segregated Facilities (is included in the proposal and must be submitted prior to the award of a Federal-aid highway construction contract exceeding \$10,000 which is not exempt from the provisions of the Equal Opportunity clause).

(b) Bidders are cautioned as follows: By signing this bid, the bidder will be deemed to have signed and agreed to the provisions of the "Certification of Nonsegregated Facilities" in this proposal. This certification provides that the bidder does not maintain or provide for his employees facilities which are segregated on a basis of race, creed, color, or national origin, whether such facilities are segregated by directive or on a de facto basis. The certification also provides that the bidder will not maintain such segregated facilities.

(c) Bidders receiving Federal-aid highway construction contract awards exceeding \$10,000 which are not exempt from the provisions of the Equal Opportunity clause, will be required to provide for the forwarding of the following notice to prospective subcontractors for construction contracts and material suppliers where the subcontracts or material supply agreements exceed \$10,000 and are not exempt from the provisions of the Equal Opportunity clause.

#### ***"Notice to Prospective Subcontractors and Material Suppliers of Requirement for Certification of Nonsegregated Facilities" -***

(a) A Certification of Nonsegregated Facilities as required by the May 9, 1967, Order of the Secretary of Labor (32 F.R. 7439, May 19, 1967) on Elimination of Segregated Facilities, which is included in the proposal, or attached hereto, must be submitted by each subcontractor and material supplier prior to the award of the subcontract or consummation of a material supply agreement if such subcontract or agreement exceeds \$10,000 and is not exempt from the provisions of the Equal Opportunity clause.

(b) Subcontractors and material suppliers are cautioned as follows: By signing the subcontract or entering into a material supply agreement, the subcontractor or material supplier will be deemed to have signed and agreed to the provisions of the "Certification of Nonsegregated Facilities" in the subcontract or material supply agreement. This certification provides that the subcontractor or material supplier does not maintain or provide for his employees facilities which are segregated on the basis of race, creed, color, or national origin, whether such facilities are segregated by directive or on a de facto basis. The certification also provides that the subcontractor or material supplier will not maintain such segregated facilities.

(c) Subcontractors or material suppliers receiving subcontract awards or material supply agreements exceeding \$10,000 which are not exempt from the provisions of the Equal Opportunity clause will be required to provide for the forwarding of this notice to prospective subcontractors for construction contracts and material suppliers where the subcontracts or material supply agreements exceed \$10,000 and are not exempt from the provisions of the Equal Opportunity clause.

## **PN 031 – 07/21/2023 - PROMPT PAYMENT - ODOT-LET CONSTRUCTION PROJECTS**

Prompt payment requirements apply to ODOT (the Department) and, by extension, its Prime Contractors and Subcontractors (including DBEs and non-DBEs and including traditional subcontractors as well as material suppliers and trucking firms, collectively referred to herein as Subcontractors). The State of Ohio's laws related to prompt payment are published in Ohio Revised Code (ORC) 4113.61. ORC 4113.61 applies to all contracts. The Prime Contractor must comply with this Proposal Note, ORC 4113.61, C&MS 107.21 and, for contracts with U.S. Department of Transportation financial assistance (i.e., federally-funded contracts), Title 49, Part 26, Section 29 of the Code of Federal Regulations (CFR) (i.e., 49 CFR 26.29).

The Department monitors the payments made by Prime Contractors and Subcontractors for compliance with this Proposal Note, ORC 4113.61, C&MS 107.21 and, for federally funded contracts, 49 CFR 26.29. To facilitate this monitoring, the Department requires Prime Contractors to report their remitted payments to specified Subcontractors, and Subcontractors to report their remitted payments to specified lower-tier Subcontractors, as follows.

- Prime Contractors must report remitted payments to subcontractors (DBE/EDGE and non-DBE/EDGE), suppliers (DBE/EDGE only, unless the supplier sublets to a lower-tier DBE/EDGE firm), and trucking firms (DBE/EDGE only, unless the trucking firm sublets to a lower-tier DBE/EDGE firm) (collectively, Subcontractors).
- Subcontractors must report remitted payments to lower-tier subcontractors (DBE/EDGE and non-DBE/EDGE), suppliers (DBE/EDGE only), and trucking firms (DBE/EDGE only) (collectively, "Lower-tier Subcontractors").

The Prime Contractor must report remitted payments to Subcontractors within 10 calendar days of each payment it receives from the Department. Each Subcontractor must report remitted payments to Lower-tier Subcontractors within 10 calendar days of receipt of each payment received from the Prime Contractor. Payers must report return of retainage (and/or other amounts withheld) within 10 calendar days of release to the payee. Payment is defined as: issuing Electronic Funds Transfer (EFT) or putting a check in the mail to a subcontractor. The 10 calendar day requirement is met the date that the payment is issued to the subcontractor, not received.

All subcontractor payment reporting must take place within the Signet® application. Signet is a third-party service supported by the vendor for usage by the Prime Contractor and subcontractors. Signet is only a reporting tool; it does not process financial transactions. ODOT does not provide direct technical support for Signet.

All projects that have at least one Subcontractor are required to use Signet. Anyone needing access to Signet must submit a request to [signet-support@infotechinc.com](mailto:signet-support@infotechinc.com). Licensing and usage fees for the Signet service are incidental to the Project. The Signet vendor will charge a set fixed fee of \$1,000 per each Contract requiring Signet regardless of Contract value, Contract duration, or number of subcontractors. Prime Contractors are responsible for obtaining a Project-specific Signet license regardless of the number of Subcontractor payments made. The Prime Contractor shall be responsible for paying this fee to the Signet vendor. Helpful information on reporting Subcontractor payments in Signet may be found (as of the date of this Proposal Note) at <https://infotechinc.zendesk.com> (click Signet).

If a Prime does not anticipate having at least one subcontractor, they are not required to obtain a Signet license for that project. However, at any point in the life of the contract the Prime determines that there will be a Subcontractor, they have 10 days to notify the Department and obtain a Project-specific Signet license.

*If any contractor or Subcontractor has not previously worked on an ODOT project and/or does not have a AASHTOWare Project™ - Civil Rights & Labor (CRL) account, that contractor or Subcontractor must request a CRL account by emailing [DOT.Helpdesk@dot.ohio.gov](mailto:DOT.Helpdesk@dot.ohio.gov). CRL feeds into Signet and vice versa, so contractors and Subcontractors MUST have accounts for both systems.*

**Prime Contractors and Subcontractors shall not record or verify payments in CRL for Projects requiring Signet.**

The payer (whether Prime Contractor or Subcontractor) must report the following information:

- 1.) The name of the payee;
- 2.) The dollar amount of the payment to the payee;
- 3.) The date the payee was paid;
- 4.) The retainage or other amount withheld (if any), and the reason for the withholding (if other than for retainage).
- 5.) For DBEs, the purpose of the payment (e.g., subcontracting, trucking, supply (manufacturer), supply (regular dealer), supply (broker)).
- 6.) Anything else Signet asks for.

The payer must report its return of retainage (and/or other amounts withheld) in separate, standalone payment entries (i.e., without being commingled with a payment for work performed or materials supplied).

Subcontractors and Lower-tier Subcontractors must verify, in Signet, each payment reported by a payer within 10 calendar days of the payment being reported by the payer. This verification includes whether the payment was received, and if so, whether it was as expected or not.

The Prime Contractor must include the above prompt payment and reporting requirements in all Subcontractor (DBE/EDGE and non-DBE/EDGE), supplier (DBE/EDGE only, unless the supplier sublets to a lower-tier DBE/EDGE firm), and trucking firm (DBE/EDGE only, unless the trucking firm sublets to a lower-tier DBE/EDGE firm) agreements that it enters into and further require that all such subcontractors include the same prompt payment and reporting obligation in their lower-tier Subcontractor (DBE/EDGE and non-DBE/EDGE), supplier (DBE/EDGE only), and trucking firm (DBE/EDGE only) agreements. The project specific Signet license is applicable to all Project subcontracts and subcontractors.

Note: Payments made to non-DBE/EDGE suppliers and trucking firms need not be reported. However, as required in C&MS 107.21 and in accordance with ORC 4113.61, contractors are required to make payment to each subcontractor and supplier within 10 calendar days after receipt of payment from the Department for work performed or materials delivered or incorporated into the project—this requirement includes non-DBE/EDGE suppliers and trucking firms. If a contractor does not comply with this requirement, penalties in accordance with ORC 4113.61 may apply.

## **SUGGESTED SUB AGREEMENT LANGUAGE – FEDERAL-AID CONTRACTS**

Suggested language for the federal-aid Prime Contractor to include in its subcontractor agreements:

*As a Subcontractor, supplier\* and/or trucking firm\*, you (the payee) must verify receipt of payments from the Prime Contractor. This verification must be performed within the Signet application. You must verify each payment within 10 calendar days of the payment being reported by the Prime Contractor. This verification includes whether the payment was received, and if so, whether it was as expected or not. Furthermore, you must report payments to your lower-tier Subcontractors (DBE and non-DBE), suppliers (DBE only), and trucking firms (DBE only). The payment data reported must include any retainage (and/or other amounts) withheld and any previously withheld amounts released. You must report payments within 10 calendar days of receipt of each payment received from the Prime Contractor. You must also report return of retainage (and/or other amounts withheld) within 10 calendar days of release to the payee. Your payees must then verify each payment reported by you (the payer) within 10 calendar days of the payment being reported. Your lower-tier Subcontractor (DBE and non-DBE), supplier (DBE only), and trucking firm (DBE only) sub agreements must include this prompt payment and reporting obligation.*

*If you have not previously worked on an ODOT project and/or do not have an AASHTOWare Project™ - Civil Rights & Labor (CRL) account, you must request a CRL account by emailing [DOT.Helpdesk@dot.ohio.gov](mailto:DOT.Helpdesk@dot.ohio.gov). CRL feeds into Signet and vice versa, so you MUST have accounts for both systems.*

Suggested language for the subcontractor to include in its lower-tier sub agreements:

*As a lower-tier subcontractor (DBE or non-DBE), supplier (except non-DBE) and/or trucking firm (except non-DBE), you (the payee) must verify receipt of payments from the payer (i.e., the maker of this sub agreement with you). This verification must be performed within the Signet system. Payees must verify each payment reported by the payer within 10 days of the payment being reported. This verification includes whether the payment was received, and if so, whether it was as expected or not.*

Anyone needing access to Signet may submit a request to [signet-support@infotechinc.com](mailto:signet-support@infotechinc.com).

*If you have not previously worked on an ODOT project, and/or do not have an AASHTOWare Project™ - Civil Rights & Labor (CRL) account, you must request a CRL account by emailing [DOT.Helpdesk@dot.ohio.gov](mailto:DOT.Helpdesk@dot.ohio.gov). CRL feeds into Signet and vice versa, so you MUST have accounts for both systems.*

## **SUGGESTED SUB AGREEMENT LANGUAGE – NON-FEDERAL-AID CONTRACTS**

Suggested language for the non-federal-aid Prime Contractor to include in its subcontractor agreements:

*As a Subcontractor, supplier\* and/or trucking firm\*, you (the payee) must verify receipt of payments from the Prime Contractor. This verification must be performed within the Signet application. You must verify each payment within 10 calendar days of the payment being reported*



*by the Prime Contractor. This verification includes whether the payment was received, and if so, whether it was as expected or not. Furthermore, you must report payments to your lower-tier Subcontractors (EDGE and non-EDGE), suppliers (EDGE only), and trucking firms (EDGE only). The payment data reported must include any retainage (and/or other amounts withheld) and any previously withheld amounts released. You must report payments within 10 calendar days of receipt of each payment received from the Prime Contractor. You must also report return of retainage (and/or other amounts withheld) within 10 calendar days of release to the payee. Your payees must then verify each payment reported by you (the payer) within 10 days of the payment being reported. Your lower-tier Subcontractor (EDGE and non-EDGE), supplier (EDGE only), and trucking firm (EDGE only) sub agreements must include this prompt payment and reporting obligation.*

*If you have not previously worked on an ODOT project and/or do not have an AASHTOWare Project™ - Civil Rights & Labor (CRL) account, you must request a CRL account by emailing [DOT.Helpdesk@dot.ohio.gov](mailto:DOT.Helpdesk@dot.ohio.gov). CRL feeds into Signet and vice versa, so you MUST have accounts for both systems.*

Suggested language for the subcontractor to include in its lower-tier sub agreements:

*As a lower-tier subcontractor (EDGE or non-EDGE), supplier (except non-EDGE) and/or trucking firm (except non-EDGE), you (the payee) must verify receipt of payments from the payer (i.e., the maker of this sub agreement with you). This verification must be performed within the Signet application. Payees must verify each payment reported by the payer within 10 days of the payment being reported. This verification includes whether the payment was received, and if so, whether it was as expected or not.*

*If you have not previously worked on an ODOT project, and/or do not have an AASHTOWare Project™ - Civil Rights & Labor (CRL) account, you must request a CRL account by emailing [DOT.Helpdesk@dot.ohio.gov](mailto:DOT.Helpdesk@dot.ohio.gov). CRL feeds into Signet and vice versa, so you MUST have accounts for both systems.*

## **SANCTIONS AND ADMINISTRATIVE REMEDIES**

### **PROMPT PAYMENT**

Failure by the Prime Contractor to follow Prompt Payment requirements may result in the issuance of sanctions listed below. The Prime Contractor may also receive the below sanctions if any of their Subcontractors fail to follow Prompt Payment requirements.

- 1st Level Occurrence: The Department will issue a Letter of Reprimand to the Prime Contractor (applies if there is a failure to report payments in the Signet system and/or failure to timely pay subcontractor(s));
- 2nd Level Occurrence: The Department may withhold an estimate in the amount due to the subcontractor(s) that was not reported or paid (applies if there is a failure to report payments in the Signet system and/or failure to timely pay subcontractor(s));
  - If a Prime Contractor receives a 1<sup>st</sup> Level Occurrence reprimand for a project, all subsequent Prompt Payment violations on that project (same or different subcontractor)

may result in withholding. In this situation, no 1<sup>st</sup> Level Occurrence reprimand letters will be sent.

- 3rd Level Occurrence: The Prime Contractor may be required to pay interest in the amount of 18% per annum of the payment due, beginning on the eleventh day following the receipt of payment from the owner and ending on the date of full payment of the payment due plus interest (applies if a pattern of not paying subcontractor(s) persists or the Contractor has falsified, misrepresented or withheld information, ODOT can pursue other remedies available by law including suspension, revocation and/or debarment).

Factors to be considered in issuing sanctions may include, but are not limited to the following:

- the Contractor's past project practices;
- the magnitude and the type of offense;
- the degree of the Contractor's culpability;
- any steps taken to rectify;
- the Contractor's record of performance on other projects; and
- the number of times the Contractor has been previously sanctioned by ODOT.

#### **RETURN OF RETAINAGE**

Failure by the Prime Contractor to follow Return of Retainage requirements may result in the issuance of sanctions listed below. The Prime Contractor may also receive the below sanctions if any of their Subcontractors fail to follow Return of Retainage requirements.

- 1st Level Occurrence: The Department will issue a Letter of Reprimand to the Prime Contractor (applies if there is a failure to report retainage being held in the Signet system and/or failure to timely return retainage);
- 2nd Level Occurrence: The Department may withhold an estimate in the amount of retainage due to the subcontractor(s) (applies if there is a failure to report retainage being held in the Signet system and/or failure to timely return retainage);
  - If a Prime Contractor receives a 1<sup>st</sup> Level Occurrence reprimand for a project, all subsequent Return of Retainage violations on that project (same or different subcontractor) may result in withholding. In this situation, no 1<sup>st</sup> Level Occurrence reprimand letters will be sent.
  - Repeat Occurrences: Continued non-compliance is a material breach of contract and will be treated as such. ODOT can pursue other remedies available by law including suspension, revocation and/or debarment.

Factors to be considered in issuing sanctions may include, but are not limited to the following:

- the Contractor's past project practices;
- the magnitude and the type of offense;
- the degree of the Contractor's culpability;
- any steps taken to rectify;

- the Contractor's record of performance on other projects; and
- the number of times the Contractor has been previously sanctioned by ODOT.

#### **PN 046 - 10/15/2004 - SUBCONTRACT AGREEMENTS**

Prime contractors will not be required to submit executed C-92s with their subcontract agreements for Disadvantaged Business Enterprises (DBE) subcontractors prior to the execution of the prime contract with ODOT. The prime contractor must only furnish to the Department subcontract agreements from the DBE subcontractors with whom they propose to utilize to fulfill the project goal. Again, this requirement is at the time of contract execution with ODOT.

However, the prime contractor must submit C-92s prior to the DBE commencing work. At the time of submission of the C-92 the DBE subcontractor must have sufficient dollar and work type qualifications to perform the work. The prime contractor will be held accountable to meet the project goal.

#### **PN 013 – 10/20/2023 - DISADVANTAGED BUSINESS ENTERPRISE (DBE) UTILIZATION PLAN AND GOOD FAITH EFFORTS**

##### **DEFINITION OF *DAYS***

Unless otherwise noted, *days* means calendar days, but in computing any period of time described in this proposal note, the day from which the period begins to run is not counted, and when the last day of the period is a Saturday, Sunday, or Federal or State holiday, the period extends to the next day that is not a Saturday, Sunday, or Federal or State holiday. See <https://www.opm.gov/policy-data-oversight/pay-leave/federal-holidays> for a list of Federal holidays. State holidays are those designated in division (A) of section 124.19 of the Revised Code (<https://codes.ohio.gov/ohio-revised-code/section-124.19>), with modifications as designated in the first two sentences of division (B)(4) of section 124.18 of the Revised Code (<https://codes.ohio.gov/ohio-revised-code/section-124.18>). (State holidays are generally the same as Federal holidays.)

##### **DBE UTILIZATION PLAN**

All Bidders shall submit a DBE Utilization Plan at the time of bid setting forth specific information demonstrating how the Bidder will achieve the DBE goal. By submitting a DBE Utilization Plan, the Bidder is affirming they will be using the DBE firms identified in the Utilization Plan to meet the DBE contract goal. The Bidder further affirms it will not deviate from the Utilization Plan without ODOT's prior written consent. The DBE Utilization Plan shall be submitted with the Project Bids (EBS)/Bid Express Online Submission through the DBE List folder at the time of bid submission. Unless the bidder is a certified DBE firm, any bids received without electronic submission of the DBE Utilization Plan at or before bid time, will be deemed unresponsive. Bidders shall download the `dbe.bin` file from <http://www.dot.state.oh.us/Divisions/ContractAdmin/Contracts/Construction/dbe-bids.bin>. This file contains the current list of certified DBEs and is updated regularly. The `dbe-bids.bin` file must be saved in the same directory as the Project Bids (EBS) file.

The DBE Utilization Plan shall include the following information:

- 1) The names and addresses of the certified DBE firm(s) that will be used to meet the DBE goal;
- 2) A description of the work each DBE will perform. To count toward meeting a goal, each DBE firm must be certified in a NAICS code applicable to the kind of work the firm would perform on the contract;

- 3) Whether the DBE firm(s) being used to meet the goal will be utilized as a subcontractor, regular dealer, manufacturer, consultant or other capacity; and
- 4) The dollar amount of the participation of each DBE firm used to meet the DBE goal.

### **PROJECTS AWARDED ON ALTERNATES**

In the event the project is awarded on alternates which increases or decreases the total dollar amount of the bid, a revision to the DBE Utilization Plan and DBE Affirmation Form(s) shall be submitted and approved by the Office of Business & Economic Opportunity within five days after the notification of the alternates.

### **DBE AFFIRMATION**

The Apparent Low Bidder shall ensure the DBE firms being utilized to meet the DBE goal affirm their participation in the bid within five days after the bid opening to ODOT. The contract dollar amount(s) and/or DBE firm(s) included in the Apparent Low Bidder's DBE Utilization Plan must match the contract dollar amount(s) and/or DBE firm(s) included on the DBE Affirmation Form(s). If the contract dollar amount(s) and/or DBE firm(s) do not match, the Apparent Low Bidder shall utilize the Request for Consent to Terminate/Reduce a DBE Commitment form located at <https://www.transportation.ohio.gov/programs/business-economic-opportunity/dbe/dbe-resources/pn-013-termination> and submit for review and approval by the Office of Business & Economic Opportunity within five days of the bid opening.

The Apparent Low Bidder shall utilize the DBE Affirmation Form located at <https://www.transportation.ohio.gov/programs/business-economic-opportunity/dbe/dbe-resources/pn-013-affirmation>. The DBE Affirmation Form will be utilized as written confirmation from each listed DBE firm that it is participating in the contract in the type and amount of work provided in the Bidder's DBE Utilization Plan. The Apparent Low Bidder shall submit a separate DBE Affirmation Form for each DBE it is utilizing for the DBE goal as well as their Good Faith Efforts package if they were not able to attain the DBE Goal via DBE participation.

All other Bidders shall submit a DBE Affirmation Form(s) if notified that the information is required in order for ODOT to complete its bid assessment. Bidders shall have five days from the date of notification to submit all required DBE Affirmation Forms to ODOT. Notification will be sent via email.

In the event a DBE firm fails to confirm the information contained in the DBE Affirmation Form within five days of bid opening, the Apparent Low Bidder shall submit a Request for Consent to Terminate/Reduce a DBE Commitment, as set forth herein. The Request for Consent to Terminate/Reduce a DBE Commitment form shall be submitted within five days after bid opening in order for the Apparent Low Bidder to still be considered for contract award. The Apparent Low Bidder shall include as its reason for termination the DBE firm's failure to provide a timely affirmation and should include all efforts the Apparent Low Bidder made to obtain the affirmation from the DBE firm and shall attach proof of these efforts, if available. If the Apparent Low Bidder intends to replace the DBE Firm, it shall include the replacement firm's information on the form. In the event the Apparent Low Bidder is unable to affirm a DBE firm included in its original DBE Utilization Plan at bid submission and it results in a goal shortfall, Good Faith Efforts (GFE's) must be submitted by the fifth day after bid opening. All GFE documentation submitted for consideration should demonstrate the efforts the Bidder made prior to the time of bid submission to secure sufficient DBE participation on the project to meet the DBE goal although the Bidder was unable to do so. A DBE firm's failure to timely confirm information contained in the DBE Affirmation Form will be considered as good cause to terminate the DBE firm and will also be considered a part of the Apparent Low Bidder's Good Faith Efforts in meeting the goal.

## **DBE BIDDERS**

If the Bidder is a certified DBE firm, the Bidder is not required to complete a DBE Utilization Plan as set forth above and would not need to submit a DBE Affirmation Form for the work it is planning to self-perform in order to meet the goal.

## **JOINT VENTURES**

If the Bidder is a Joint Venture, the Joint Venture will only be considered a Certified DBE firm if the Joint Venture itself has been certified. The Joint Venture may, however, utilize a Certified DBE firm that is also a partner in the Joint Venture as part of its DBE Utilization Plan. The Certified DBE Firm/Joint Venture Partner, however, does not need to submit a DBE Affirmation Form for any work that the Certified DBE Firm/Joint Venture Partner is going to perform to meet the goal. ODOT will consider submission of the Joint Venture's bid as the Certified DBE Firm/Joint Venture Partner's confirmation that it is participating in the contract.

## **GOOD FAITH EFFORTS (GFE's)**

If the DBE contract goal established by ODOT is not met, the Apparent Low Bidder shall demonstrate it made adequate good faith efforts to meet the goal, even though it did not succeed in obtaining enough DBE participation to do so.

If the Apparent Low Bidder does not meet the goal at bid time, the Apparent Low Bidder shall submit its Good Faith Efforts (GFE's) documentation within five days of the bid opening. Submission of DBE affirmation(s) with additional participation sufficient to meet the DBE contract goal does not cure the Apparent Low Bidder's failure to meet the goal at bid time or eliminate the Apparent Low Bidder's responsibility of submitting GFE's within five days of the bid opening.

The Apparent Low Bidder shall demonstrate its GFE's by submitting the following information within five days after the bid opening:

- (1) All written quotes received from certified DBE firms;
- (2) All written (including email) communications between the Apparent Low Bidder and DBE firms;
- (3) All written solicitations to DBE firms, even if unsuccessful;
- (4) Copies of each non-DBE quote when a non-DBE was selected over a DBE for work on the contract;
- (5) Phone logs of communications with DBE firms.

The Apparent Low Bidder shall utilize the Pre-Bid GFE Template to document their GFE's. This template and supporting documentation shall be sent along with any DBE Affirmation Forms within five days of bid opening. ODOT has provided Good Faith Efforts Guidance located at <https://www.transportation.ohio.gov/programs/business-economic-opportunity/dbe/dbe-resources/gfe-contractors>.

All other Bidders shall submit documentation of GFE's if notified that the information is required in order for ODOT to complete its bid assessment. Bidders shall have five days from the date of notification to submit all required GFE documentation. Notification will be by email.

ODOT shall utilize the guidance set forth in 49 CFR §26.53 Appendix A in determining whether the Bidder has made adequate good faith efforts to meet the goal.

## **ADMINISTRATIVE RECONSIDERATION**

ODOT will review the GFE documentation and issue a written determination on whether adequate GFE's have been demonstrated prior to contract award. If ODOT determines the Apparent Low Bidder has failed to demonstrate adequate GFE's to meet the goal, the Apparent Low Bidder will have an opportunity for administrative reconsideration prior to the contract being awarded.

As part of this reconsideration, the Apparent Low Bidder may provide written documentation or argument concerning the issue of whether it met the goal or made adequate good faith efforts to do so. Such written documentation or argument must be provided to ODOT, attention to the Office of Chief Legal Counsel, 1980 West Broad Street, MS 1500, Columbus, Ohio 43223 (with copy to the Office of Contract Sales, MS 4110), within two business days of ODOT's written determination that GFE's were not adequately demonstrated. The Apparent Low Bidder may also include in their written documentation a request for an in person meeting to discuss the issue of whether it met the goal or made adequate good faith efforts to do so. ODOT's Office of Chief Legal Counsel will respond to the Apparent Low Bidder within five business days of receiving written documentation or holding the in-person meeting.

ODOT will send the Apparent Low Bidder a written decision on reconsideration explaining the basis for finding that the Apparent Low Bidder did or did not meet the goal or make adequate good faith efforts to do so. The result of the reconsideration process is not administratively appealable to the United States Department of Transportation.

#### **TERMINATION OR REPLACEMENT OF A DBE**

By submitting a DBE Utilization Plan, the Bidder is committing to use the DBE firms identified in the plan. The Apparent Low Bidder/Awarded Contractor shall utilize the specific DBEs listed in the DBE Utilization Plan to perform the work and supply the materials for which each is listed unless the Apparent Low Bidder/Awarded Contractor obtains written consent as provided in this paragraph. In order to request termination or substitution of a DBE firm, the Apparent Low Bidder/Awarded Contractor shall utilize the Request for Consent to Terminate/Reduce a DBE Commitment form located at <https://www.transportation.ohio.gov/programs/business-economic-opportunity/dbe/dbe-resources/pn-013-termination>.

This termination/replacement procedure applies only to DBE firms or the amount of work being utilized to meet the goal.

Without ODOT's written consent to terminate/replace a DBE firm being utilized to meet the goal, the Awarded Contractor shall not be entitled to any payment for DBE listed work or material unless it is performed or supplied by the listed DBE.

#### **GOOD CAUSE**

ODOT may provide written consent to terminate a DBE only if it agrees, for reasons stated in a concurrence document, that the Apparent Low Bidder/Awarded Contractor has good cause to terminate the DBE firm.

For purposes of this paragraph, good cause to terminate a DBE includes the following circumstances:

- 1) The listed DBE firm fails or refuses to provide the required DBE Affirmation Form or to execute a written contract;
- 2) The listed DBE firm fails or refuses to perform the work of its subcontract in a manner consistent with normal industry standards. Provided, however, that good cause does not exist if the failure or

- refusal of the DBE firm to perform its work on the subcontract results from the bad faith or discriminatory action of the awarded contractor;
- 3) The listed DBE firm fails or refuses to meet the awarded contractor's reasonable, nondiscriminatory bond requirements.
  - 4) The listed DBE firm becomes bankrupt, insolvent, or exhibits credit unworthiness;
  - 5) The listed DBE firm is ineligible to work on public works projects because of suspension and debarment proceedings pursuant 2 CFR Parts 180, 215 and 1200 or applicable state law;
  - 6) ODOT has determined that the listed DBE firm is not a responsible contractor;
  - 7) The listed DBE firm voluntarily withdraws from the project and provides to you written notice of its withdrawal;
  - 8) The listed DBE is ineligible to receive DBE credit for the type of work required;
  - 9) A DBE owner dies or becomes disabled with the result that the listed DBE contractor is unable to complete its work on the contract; and
  - 10) Other documented good cause that ODOT determines compels the termination of the DBE firm. Provided, that good cause does not exist if the awarded contractor seeks to terminate a DBE it relied upon to obtain the contract so the awarded contractor can self-perform the work for which the DBE contractor was engaged or so the awarded contractor can substitute another DBE or non-DBE contractor after contract award.

## **REPLACEMENT**

When a DBE firm is terminated or fails to complete its work on the contract for any reason the Awarded Contractor must make GFEs to find another DBE firm to replace the original DBE. These GFEs shall be directed at finding another DBE to perform at least the same amount of work under the contract as the DBE that was terminated, to the extent needed to meet the contract goal. The GFEs shall be documented by the Awarded Contractor. If ODOT requests documentation under this provision, the Awarded Contractor shall submit the documentation within seven days, which may be extended for an additional seven days if necessary at the request of the contractor, and ODOT shall provide a written determination to the contractor stating whether GFEs have been demonstrated.

In addition to post-award terminations, the provisions of this section apply to pre-award deletions and substitutions of DBE firms put forward by Bidders in the DBE Utilization Plan.

## **ADDITION**

In the event additional DBE participation is required for the project, the Awarded Contractor shall utilize the DBE Affirmation Form located at <https://www.transportation.ohio.gov/programs/business-economic-opportunity/dbe/dbe-resources/pn-013-affirmation>. The DBE Affirmation Form will be utilized as written confirmation from each DBE firm that it is participating in the contract in the type and amount of work on the project.

## **WRITTEN NOTICE TO DBE**

Before transmitting to ODOT its request to terminate and/or substitute a DBE firm, the Apparent Low Bidder/Awarded Contractor must give notice in writing to the DBE firm, with a copy to ODOT, of its intent to request to terminate and/or substitute, and the reason(s) for the request.

The Apparent Low Bidder/Awarded Contractor must give the DBE five days to respond to the notice, advising ODOT and the Apparent Low Bidder/Awarded Contractor of the reasons, if any, why it objects to the proposed termination of its subcontract and why ODOT should not approve the Apparent Low

Bidder/Awarded Contractor's action. If required in a particular case as a matter of public necessity (e.g., safety), ODOT may provide a response period shorter than five days.

### **GOAL ATTAINMENT POST AWARD**

The Awarded Contractor shall make available upon request a copy of all DBE subcontracts. The Awarded Contractor shall ensure that all subcontracts or agreements with DBEs require that the subcontract and all lower tier subcontractors be performed in accordance with this Proposal Note.

Approval of a DBE Utilization Plan does not ensure approval of C-92 Requests to Sublet nor does approval of a DBE Utilization Plan indicate the DBE goal has been met. ODOT will monitor goal attainment throughout the life of the project. It is the responsibility of the Awarded Contractor to advise ODOT of any changes to the DBE Utilization plan throughout the life of the project. The DBE goal of a project is stated as a percentage of the contract. In the event the contract amount increases or decreases, the actual dollar amount of the DBE goal for the project may increase or decrease accordingly.

### **SANCTIONS AND ADMINISTRATIVE REMEDIES**

#### **PRE-BID**

Failure by the Apparent Low Bidder to do any of the following shall result in the bid being rejected as non-responsive in accordance with ORC §5525.08:

- 1) Failure to submit a complete DBE Utilization Plan at the time of bid;
- 2) Failure to submit DBE Affirmation Form(s) and/or failure to submit Requests for Consent to Terminate/Reduce a DBE Commitment as required by this Proposal Note; or
- 3) Failure to meet the goal and/or failure to demonstrate GFEs to meet the goal as required by this Proposal Note.

#### **POST-BID**

Failure by the Awarded Contractor to carry out the requirements of this Proposal Note, including the submission of adequate good faith efforts to meet the goal for a project, is a material breach of the contract and may result in the issuance of sanctions as follows:

1<sup>st</sup> Tier: Letter of Reprimand

2<sup>nd</sup> Tier: Damages equivalent to the DBE shortfall

3<sup>rd</sup> Tier: If a pattern of paying damages persists or the Contractor has falsified, misrepresented or withheld information, ODOT can pursue other remedies available by law including suspension, revocation, and/or debarment.

Factors to be considered in issuing sanctions may include, but are not limited to the following:

- the magnitude and type of offense
- the degree of the Contractor's culpability
- any steps taken to rectify
- the Contractor's record of performance on other projects including, but not limited to:
  - annual DBE participation
  - annual DBE participation on projects without goals



- the number of complaints ODOT has received regarding the Contractor
- the number of times the Contractor has been previously sanctioned by ODOT

**PN 090 – 01/15/2021 - WORK TYPE CODES AND DESCRIPTIONS**

The Department will indicate the work type required for each pay item. If the line item does not have a corresponding work type, NR will be shown in the work type column. This proposal note will govern the assignment of work types to pay items.

However, the Contractor may perform incidental work items for which it does not hold the required work type provided the cost of the work does not exceed 5% of the total bid. The Contractor may also perform Work Type 26 (Structural steel painting) without holding the required work type provided the total area to be painted does not exceed 700 SF per structure. The Contractor may not perform any quantity of Work Type 55 or 56 unless they hold the required work type. The Contractor may perform Work Type 57 (Sealing of Concrete Surfaces with Epoxy or Non-Epoxy Sealers) without holding the required work type provided the total area to be sealed does not exceed 75 SY per project.

Listed below are the work types for this proposal. In accordance with Ohio law, a bidder must possess work types, and perform work equal to the percentage included on the front cover of this proposal. This is a percentage of the total amount of the submitted bid price. The Director may, by insertion of a contract provision, reduce the fifty percent amount.

<b>Work Type Code</b>	<b>Work Type Description</b>	<b>Work Type Code</b>	<b>Work Type Description</b>
1	Clearing & Grubbing	29	Structure Repairs
2	Building Removal	30	Hydrodemolition
3	Gas, Oil, Water Well Abandonments	31	Structural Steel Repairs
4	Roadway Excavation & Embankment Construction	32	Heat Straightening
5	Major Roadway Excavations	33	Tieback Installation
6	Incidental Grading	34	Earth Retaining Structures
7	Soil Stabilization	35	Drainage (Culverts, Misc.)
8	Temporary Soil Erosion & Sediment Control	36	Guardrail / Attenuators
9	Aggregate Bases	37	Fence
10	Flexible Paving	38	Misc. Concrete
11	Apply Bituminous Treatments	39	Maintenance of Traffic
12	Rigid Paving	40	Waterproofing
13	Pavement Planning, Milling, Scarification	41	Raised Pavement Markers
14	Concrete Texturing	42	Signing
15	Sawing	43	Highway Lighting
16	Flexible Replacement	44	Traffic Signals - Standard
17	Rigid Pavement Replacement	45	Pavement Markings
18	Pavement Rubblizing, Breaking, Pulverizing	46	Landscaping
19	Structure Removal	47	Mowing
20	Level 1 Bridge	48	Trucking
21	Level 2 Bridge	49	Herbicide Spraying
22	Level 3 Bridge	50	Railroad Track Construction
23	Reinforcing Steel	51	Micro Tunneling

24	Structural Steel Erection	52	Tunneling
25	Stud Welding	53	Piling
26	Structural Steel Painting	54	Post-Tensioning Bridge Members
27	Expansion & Contraction Joints, Joint sealers, Bearing Devices	55	Fiber Optic Cable Installation, Splicing, Termination and Testing – Traffic Signal System
28	Caissons / Drilled Shafts	56	Fiber Optic Cable Installation, Splicing, Termination and Testing – Intelligent Transportation System
		57	Sealing of Concrete Surfaces with Epoxy or Non-Epoxy Sealers

**PN 059 - 10/15/2004 - WAGE DETERMINATION APPEALS PROCESS**

- 1.) Has there been an initial decision in the matter? This can be:
- an existing published wage determination
  - a survey underlying a wage determination
  - a Wage and Hour Division letter setting forth a position on a wage determination matter
  - a conformance (additional classification and rate) ruling

On survey related matters, initial contact, including requests for summaries of surveys, should be with the Wage and Hour Regional Office for the area in which the survey was conducted because those Regional Offices have responsibility for the Davis-Bacon survey program. If the response for this initial contact is not satisfactory, then the process described in 2.) and 3.) should be followed.

With regard to any other matter not yet ripe for the formal process described here, initial contact should be with the Branch of Construction Wage Determinations. Write to:

Branch of Construction Wage Determination  
Wage and Hour Division  
U. S. Department of Labor  
200 Constitution Avenue, N.W.  
Washington, D. C. 20210

- 2.) If the answer to the question in 1.) is yes, then an interested party (those affected by the action) can request review and reconsideration from the Wage and Hour Administrator (see 29 CFR Part 1.8 and 29 CFR Part 7). Write to:

Wage and Hour Administrator  
U. S Department of Labor  
200 Constitution Avenue, N.W.  
Washington, D. C. 20210

The request should be accompanied by a full statement of the interested party's position and by any information (wage payment data, project description, area practice material, etc.) that the requester considers relevant to the issue.

- 3.) If the decision of the Administrator is not favorable, an interested party may appeal directly to the Administrative Review Board (formerly the Wage Appeals Board). Write to:

Administrative Review Board

U. S. Department of Labor  
200 Constitution Avenue, N. W.  
Washington, D. C. 20210

4.) All decisions by the Administrative Review Board are final.

#### **PN 061 – 01/20/2016 -WAGE SCALE ON ALL FEDERAL-AID PROJECTS**

The wage rates for this project were determined by the Secretary of Labor in accordance with Federal-Aid requirements.

***Contractors shall use only the classifications and wage rates set forth in the United States Department of Labor (USDOL) wage decision found at the website noted below on payrolls submitted to the District Office. Additionally, please note that the wage modification in effect at the time of the project sale date, shall be used by all contractors.***

This USDOL wage decision may be viewed, by accessing the United States Department of Labor (USDOL) website at:

[SAM.gov | Wage Determinations](#)

This contract requires the payment of the total of the basic hourly rates plus the fringe benefits payments for each classification in accordance with the following regulations which by reference are made part of this contract:

- 1) The U.S. Department of Labor Regulations, Title 29, Subtitle A, Part 5, Sections 5.5, 5.31, and 5.32, most recent revision at contract execution.
- 2) Form FHWA-1273 (most recent revision at contract execution) Part IV. Payment of Predetermined Minimum Wage and Part V. Statements and Payrolls.

The failure to pay prevailing wages to all laborers and mechanics employed on this project, shall be considered a breach of contract. Such a failure may result in the termination of the contract and debarment.

The Contractor and all subcontractors shall pay all wages and fringe benefits by company check. All payroll records and canceled pay checks shall be maintained for at least three years after final acceptance as defined in section 109.12 of the Ohio Department of Transportation Construction and Materials Specifications. The Contractor's and all subcontractors payroll records and canceled pay checks shall be made available for inspection by the Department and the U.S. Department of Labor, upon request, anytime during the life of the contract, and for three years thereafter by the U.S. Department of Labor. Additionally, the Contractor and all subcontractors shall permit such representatives to interview any employees during working hours while the employee is on the job.

The wage and fringe rates determined for this project shall be posted by the Contractor in a prominent and accessible place on the project, field office, or equipment yard where they can be easily read by the workers.

The Contractor (both prime and sub) shall submit via the Department Civil Rights & Labor System (CRL), certified payrolls each week beginning three weeks after the start of work. The Department will not accept payrolls not uploaded via CRL (no handwritten payrolls). These payrolls shall include but not limited to the following:

1. Employee name, address, social security number, classification, and hours worked.
2. The basic hourly and overtime rate paid, total pay, and the manner in which fringe benefit payments have been irrevocably made.
3. The contract ID and pay week dates.
4. Signature of an authorized company representative will be done online through CRL. CRL Requirements with interactive training guides can be found at [transportation.ohio.gov/CRL](http://transportation.ohio.gov/CRL).

Additionally, a copy of the "Apprentice Certification" obtained from the Ohio State Apprenticeship Council, must accompany all certified payrolls submitted for all apprentices working on this project. Instructions for attaching the apprenticeship certificate can also be found at [transportation.ohio.gov/CRL](http://transportation.ohio.gov/CRL) under Attaching the Apprenticeship Certificate.

Please be aware that it is ultimately the responsibility of the Contractor to ensure that all laws relating to prevailing wages in the USDOL Regulations, Title 29, parts 1 and 5, are strictly adhered to by all subcontractors on the project.

If the Contractor or any subcontractor fails to comply with any of the provisions contained in this proposal note, the Department may terminate the contract, debar the Contractor or Subcontractor and/or withhold or suspend pay estimates after written notice and a reasonable opportunity to comply has been provided.

#### **PN 050 - 10/15/2004 - LIMITATION ON USE OF CONTRACT FUNDS FOR LOBBYING**

1. The prospective bidder certifies, by signing and submitting this bid proposal, to the best of his or her knowledge and belief, that:
  - a. No Federal appropriated funds have been paid or will be paid, by or on behalf of the undersigned, to any person for influencing or attempting to influence an officer or employee of any Federal agency, a Member of Congress, an officer or employee of Congress, or an employee of a member of Congress in connection with the awarding of any Federal contract, the making of any Federal grant, the making of any Federal loan, the entering into of any cooperative agreement, and the extension, continuation, renewal, amendment, or modification of any Federal contract, grant, loan, or cooperative agreement.
  - b. If any funds other than Federal appropriated funds have been paid or will be paid to any person for influencing or attempting to influence an officer or employee of any Federal agency, a Member of Congress, an officer or employee of Congress, or an employee of a Member of Congress in connection with this Federal contract, grant, loan, or cooperative agreement, the undersigned shall complete and submit Standard Form-LLL, "Disclosure Form to Report Lobbying" in accordance with its instructions.
2. This certification is a material representation of fact upon which reliance was placed when this transaction was made or entered into. This certification is a prerequisite for making or entering into this transaction imposed by Section 1352, Title 31, U.S. Code. Any person who fails to file the required certification shall be subject to civil penalty of not less than \$10,000 and not more than \$100,000 for each such failure.
3. The prospective bidder also agrees by submitting his or her bid proposal that he or she shall require that the language of this certification be included in all lower tier subcontracts, which exceed \$100,000 and that all such sub-recipients shall certify and disclose accordingly.

#### **PN 045 - 10/15/2004 - NON - COLLUSION AFFIDAVIT**

In accordance with Title 23 United States Code, Section 112 and Ohio Revised Code, Chapter 1331 et. seq; and Sections 2921.11 and 2921.13, the bidder hereby states, under penalty of perjury and under other such penalties as the law provides, that he or his agents or employees have not entered either directly or indirectly into any agreement, participated in any collusion, or otherwise taken any action in restraint of free competitive bidding in connection with this proposal. Execution of this proposal on the signature portion thereof shall constitute also signature of this Non-Collusion Affidavit as permitted by title 28 United States Code, Section 1746.

### **REPORTING BID RIGGING**

To report bid rigging activities call:

1-800-424-9071

The U.S. Department of Transportation (DOT) operates the above toll-free "hotline" Monday through Friday, 8:00 a.m. to 5:00 p.m. eastern time. Anyone with knowledge of possible bid rigging, bidder collusion, or other fraudulent activities should use the "hotline" to report such activities.

The "hotline" is part of the DOT's continuing effort to identify and investigate highway construction contract fraud and abuse and is operated under the direction of the DOT Inspector General. All information will be treated confidentially and caller anonymity will be respected.

### **PN 133 – 10/20/2023 – PRODUCTS MADE IN THE UNITED STATES**

The requirements of this note replace the domestic material requirements in 106.09 of the Construction & Material Specifications.

Furnish products that are made in the United States according to the applicable provisions of the Infrastructure Investment and Jobs Act, Pub. L. No. 117-58, which includes the Build America, Buy America Act Pub. L. 117-58, §§ 70901-52.

**A. Federal Requirements.** All steel or iron products incorporated permanently into the Work must be made of steel or iron produced in the United States and all subsequent manufacturing must be performed in the United States. Manufacturing is any process that modifies the chemical content; physical shape or size; or final finish of a product. Manufacturing begins with the initial melting and mixing and continues through the bending and coating stages. If a domestic product is taken out of the United States for any process, it becomes a foreign source material.

All manufactured products used in the project are not required to be produced in the United States.

All construction materials must be manufactured in the United States—this means that all manufacturing processes for the construction material occurred in the United States.

“Construction materials” includes an article, material, or supply—other than an item of primarily iron or steel; a manufactured product; cement and cementitious materials; aggregates such as stone, sand, or gravel; or aggregate binding agents or additives—that is or consists primarily of:

- Non-ferrous metals;
- Plastic and polymer-based products (including polyvinylchloride, composite building materials, and polymers used in fiber optic cables);
- Glass (including optic glass);
- Fiber optic cable (including drop cable);

- Optical fiber;
- Lumber;
- Engineered wood; and
- Drywall.

To provide clarity to item, product, and material manufacturers and processors, we note that items that consist of two or more of the listed materials that have been combined together through a manufacturing process, and items that include at least one of the listed materials combined with a material that is not listed through a manufacturing process, should be treated as manufactured products, rather than as construction materials. For example, a plastic framed sliding window should be treated as a manufactured product while plate glass should be treated as a construction material.

Construction materials brought on site and combined with other materials are not considered manufactured products.

**B. Exceptions.** The Director may grant specific written permission to use non-domestic steel or iron products in any type of construction in accordance with 23 CFR 635.410(b)(4). The Director may grant such exceptions under the following condition:

- The cost of products to be used does not exceed 0.1 percent of the total Contract cost, or \$2,500, whichever is greater. The cost is the value of the product as delivered to the project.

The Director may grant specific written permission to use non-domestic construction materials in any type of construction in accordance with 2 CFR Part 184. The Director may grant such exceptions under the following conditions:

- The total value of the non-compliant products is no more than the lesser of \$1,000,000 or 5% of total applicable costs for the project; or
  - applicable costs are defined as the cost of materials (including the cost of any manufactured products) used in the project that are subject to a domestic preference requirement
  - the actual cost of the materials, not the anticipated cost of those materials.
- The total amount of the Federal financial applied to the project, through awards or subawards, is below \$500,000;

The Contractor may request an exception on forms provided by the Department.

The Buy America preference only applies to articles, materials, and supplies that are consumed in, incorporated into, or affixed to an infrastructure project. As such, it does not apply to tools, equipment, and supplies, such as temporary scaffolding, brought to the construction site and removed at or before the completion of the infrastructure project. Nor does a Buy America preference apply to equipment and furnishings, such as movable chairs, desks, and portable computer equipment, that are used at or within the finished infrastructure project, but are not an integral part of the structure or permanently affixed to the infrastructure project.

**C. Proof of Domestic Origin.** Furnish certification to the Engineer showing the domestic origin of all products covered by this section before they are incorporated into the Work. The Daily Source Report form itself is not acceptable certification of domestic origin. Non-domestic product(s) incorporated into the Work does not relieve the Contractor of any responsibility to correct the Work up to and including removal and replacement of the non-domestic product(s). Products without a traceable domestic origin will be treated as a non-domestic product.

**PN 040 – 05/30/23 - PROHIBITION OF THE EXPENDITURE OF PUBLIC FUNDS FOR OFFSHORE PURPOSES**

Executive Order 2022-02D “*State of Ohio’s Response to Russia’s Unjust War on the Country of Ukraine*” prohibits purchases from or investment in a Russian institution or company. This Order shall be read in conjunction with Executive Order 2019-12D “*Governing the Expenditure of Public Funds for Offshore Services*” which already largely prohibits the contracting and purchasing of services from overseas sources, including subcontractors.

The Ohio Department of Transportation will not enter into any contract to purchase services provided outside of the United States or that allows State Data to be sent, taken, accessed, tested, maintained, backed-up, stored, or made available remotely outside of the United States, unless a duly signed waiver from the Department of Administrative Services has been obtained. State Data includes all data and information provided by, created by, created for, or related to activities of the State and any information from, to, or related to all persons that conduct business activities within the State, including, but not limited to Sensitive Data. Sensitive Data means any type of data that presents a high or moderate degree of risk if released, disclosed, modified, or deleted or disclosed without authorization.

Notwithstanding any other terms of this Contract, the Department reserves the right to recover any funds paid for services the Contractor performs outside of the United States for which it did not receive a waiver. The Department does not waive any other rights and remedies provided to the Department in the Contract.

Further, the Department will not make any purchase from or investment in any Russian institution or company. Notwithstanding any other terms of this Contract, the Department reserves the right to recover any funds paid to the Contractor for purchases or investments in a Russian institution or company in violation of Executive Order 2022-02D. The provisions of this paragraph will expire when the applicable Executive Order is no longer effective.

**The Contractor must sign and complete the attached Affirmation and Disclosure Form and return the form with the executed contract.** By signing the Disclosure and Affirmation Form, the Contractor is acknowledging that it understands and will meet the requirements of the above prohibitions. During the performance of this Contract, if the Contractor changes or adds to the location(s) disclosed on the Affirmation and Disclosure Form, Contractor must complete and submit a revised Affirmation and Disclosure Form reflecting such changes.

(The remainder of this page is left intentionally blank.)

**AFFIRMATION AND DISCLOSURE FORM**

---

Contractor affirms that Contractor has read and understands the applicable Executive Orders regarding the prohibitions of performance of offshore services, locating State data offshore in any way, or purchasing from Russian institutions or companies.

Contractor shall provide all the name(s) and location(s) where services under this Contract will be performed and where data is located in the spaces provided below or by attachment. Failure to provide this information may result in no award. If the Contractor will not be using subcontractors, indicate "Not Applicable" in the appropriate spaces.

1. Principal location of business of Contractor:

\_\_\_\_\_  
(Address)

\_\_\_\_\_  
(City, State, Zip)

Name/Principal location of business of subcontractor(s):

\_\_\_\_\_  
(Name)

\_\_\_\_\_  
(Address, City, State, Zip)

\_\_\_\_\_  
(Name)

\_\_\_\_\_  
(Address, City, State, Zip)

2. Location where services will be performed by Contractor:

\_\_\_\_\_  
(Address)

\_\_\_\_\_  
(City, State, Zip)

Name/Location where services will be performed by subcontractor(s):

\_\_\_\_\_  
(Name)

\_\_\_\_\_  
(Address, City, State, Zip)

\_\_\_\_\_  
(Name)

\_\_\_\_\_  
(Address, City, State, Zip)



3. Location where state data will be located, by Contractor:

\_\_\_\_\_  
(Address) (City, State, Zip)

Name/Location(s) where state data will be located by subcontractor(s):

\_\_\_\_\_  
(Name) (Address, City, State, Zip)

\_\_\_\_\_  
(Name) (Address, City, State, Zip)

\_\_\_\_\_  
(Name) (Address, City, State, Zip)

\_\_\_\_\_  
(Name) (Address, City, State, Zip)

\_\_\_\_\_  
(Name) (Address, City, State, Zip)

Contractor affirms, understands, and agrees that Contractor and its subcontractors are under a duty to disclose to the State any change or shift in location of services performed by Contractor or its subcontractors before, during and after execution of any contract with the State. Contractor agrees it shall so notify the State immediately of any such change or shift in location of its services. The State has the right to immediately terminate the contract, unless a duly signed waiver from the State has been attained to perform the services outside the United States.

On behalf of the Contractor, I acknowledge that I am duly authorized to execute this Affirmation and Disclosure Form and have read and understand that this form is a part of any Contract that Contractor may enter into with the State and is incorporated therein.

By: \_\_\_\_\_  
Contractor

Print Name: \_\_\_\_\_

Title: \_\_\_\_\_

Date: \_\_\_\_\_

**PN 034 – 07/21/2023 – SUPPLEMENTAL SPECIFICATION 832 COMPENSATION**

All BMP listed in SS832 Appendix F are compensated per SS832, Appendix F dated July 21, 2023.

**Utility Note**  
**VIN-50-28.74**  
**PID #113174**

Bidders are advised that the following utility facilities will remain in place or be relocated within the construction limits of the project as set out below. All station locations listed below are approximate unless otherwise stated.

**Buckeye Rural Electric**

The power company has an existing road crossing over US 50 located at station 1514 that proceeds to a pole on the south side of the roadway located at station 1515+20 (outside ODOT right of way). From this pole the line turns and proceeds east (outside ODOT right of way) to a pole at station 1521+15 where it crosses over US 50.

- This line will remain active and in place during construction.

**Frontier**

The phone company has an existing aerial line that runs parallel on the south side of the roadway from station 1514 to station 1521+15. This line will be removed and relocated as listed below.

- The phone line will be located on existing BREC power poles. There will be an existing road crossing over US 50 located at station 1514 that proceeds to a pole on the south side of the roadway located at station 1515+20 (outside ODOT right of way). From this pole, the line turns and proceeds east (outside ODOT right of way) to a pole at station 1521+15 where it crosses over US 50. At station 1521+15 there will be aerial line that will also feed to the east along US 50 (outside project work limits).

**Bancequity Petroleum**

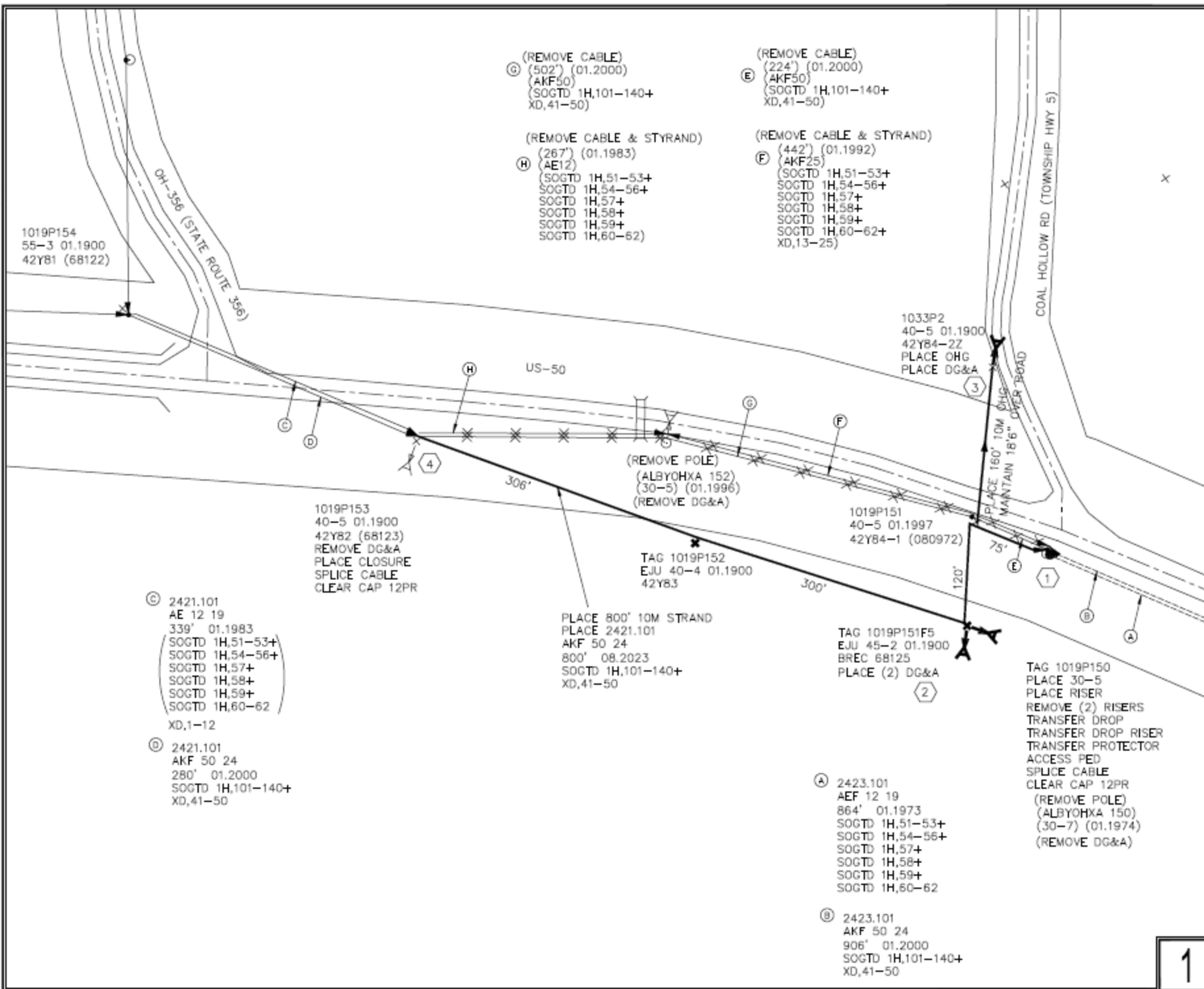
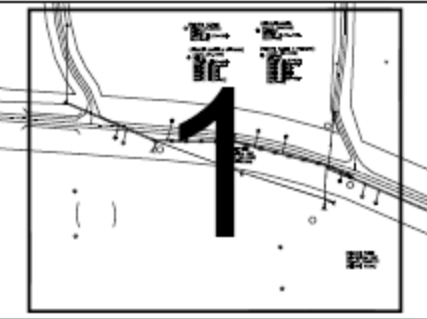
The gas company has an existing line located on the south side of the roadway from station 1514 to station 1521.

- The gas company has informed us this line is located outside project work limits.
- Contractor is required to call Thomas Fischietto at 330-468-5935, 2 weeks prior to starting work so they can discuss location of gas line.

**GENERAL COMMENTS**

Sections 105.07 and 107.16 of the Department of Transportation Construction and Materials Specifications require, among other things, that the contractor cooperate with all utilities located within the limits of this construction project and take responsibility for the protection of the utility property and services.

This note is to advise bidders of all relocated and / or remaining power line locations within the project work limits. The contractor shall comply with all OSHA power line safety regulations and ensure proper equipment and / or OSHA recommended procedures are used to comply with power line clearance distances.



**UNITS / ACCT CODES**

UNIT	ACCT CODE

**REVISIONS**

NO.	DATE	DESCRIPTION



PROJECT NUMBER	2532269	C.D. AREA	ALBANY
		ENCL CODE	OH ALBANY
DRAWN DATE	ENGR. TAMI GRANFORD	DATE	08/25/2009 RDMV
9/8/2009	PHONE 335-894-8800	FILE	2532269.RDMV
SCALE 1:100	TAX DISTRICT --	DWG	3 OF 3
TOWNSHIP INDX	RNG. --	SEC. --	

1

**Project Number: 240190**

To the Director of the Ohio Department of Transportation: The undersigned, having full knowledge of the site, plans and specifications for the following improvement and the conditions of this proposal, hereby agrees to furnish all services, labor, materials, and equipment necessary to complete the entire project, according to the plans, specifications and completion dates, and to accept the unit prices specified below for each item as full compensation for the work in this proposal.

Date Set for Completion: **10/1/2024**

---

**Unit Price Contract**

Project Number: 240190

**Section 0001 ROADWAY**

Line	Alt	Item Code	Item Description	WT	Unit	Quantity
0001		201E11000	CLEARING AND GRUBBING (WT: 01)	01	LS	1.000
0002		202E38000	GUARDRAIL REMOVED (WT: NR)	NR	FT	700.000
0003		203E10000	EXCAVATION (WT: 06)	06	CY	420.000
0004		203E20000	EMBANKMENT (WT: NR)	NR	CY	527.000
0005		204E10000	SUBGRADE COMPACTION (WT: NR)	NR	SY	567.000
0006		606E15050	GUARDRAIL, TYPE MGS (WT: 36)	36	FT	612.500
0007		606E17360	GUARDRAIL, TYPE MGS, LONG-SPAN (WT: 36)	36	FT	87.500
0008		623E40500	REFERENCE MONUMENT, TYPE A (WT: NR)	NR	EACH	1.000

**Section 0002 EROSION CONTROL**

Line	Alt	Item Code	Item Description	WT	Unit	Quantity
0009		601E32100	ROCK CHANNEL PROTECTION, TYPE B WITH FILTER (WT: 35)	35	CY	78.000
0010		659E10000	SEEDING AND MULCHING (WT: 46)	46	SY	2,337.000
0011		659E20000	COMMERCIAL FERTILIZER (WT: 46)	46	TON	0.220
0012		659E31000	LIME (WT: 46)	46	ACRE	0.490
0013		659E35000	WATER (WT: 46)	46	MGAL	7.000
0014		832E30000	EROSION CONTROL (WT: 08)	08	EACH	2,000.000

**Section 0003 DRAINAGE**

Line	Alt	Item Code	Item Description	WT	Unit	Quantity
0015		605E31100	AGGREGATE DRAINS (WT: 35)	35	FT	36.000

**Section 0004 PAVEMENT**

Line	Alt	Item Code	Item Description	WT	Unit	Quantity
0016		254E01000	PAVEMENT PLANING, ASPHALT CONCRETE, (1.5" AVERAGE DEPTH) (WT: 13)	13	SY	1,547.000
0017		301E56000	ASPHALT CONCRETE BASE, PG64-22, (449) (WT: 10)	10	CY	115.000
0018		304E20000	AGGREGATE BASE (WT: 09)	09	CY	91.000
0019		407E20000	NON-TRACKING TACK COAT (WT: 10)	10	GAL	213.000
0020		441E70000	ASPHALT CONCRETE SURFACE COURSE, TYPE 1, (449), PG64-22 (WT: 10)	10	CY	106.000

Project Number: 240190

**Section 0005 TRAFFIC CONTROL**

Line	Alt	Item Code	Item Description	WT	Unit	Quantity
0021		621E54000	RAISED PAVEMENT MARKER REMOVED (WT: NR)	NR	EACH	15.000
0022		626E00110	BARRIER REFLECTOR, TYPE 2, (BIDIRECTIONAL) (WT: NR)	NR	EACH	10.000
0023		630E85100	REMOVAL OF GROUND MOUNTED SIGN AND REERECTION (WT: 42)	42	EACH	2.000
0024		630E86010	REMOVAL OF GROUND MOUNTED POST SUPPORT AND REERECTION (WT: 42)	42	EACH	2.000
0025		642E00104	EDGE LINE, 6", TYPE 1 (WT: 45)	45	MILE	0.250
0026		642E00300	CENTER LINE, TYPE 1 (WT: 45)	45	MILE	0.130

**Section 0006 MAINTENANCE OF TRAFFIC**

Line	Alt	Item Code	Item Description	WT	Unit	Quantity
0027		614E12384	WORK ZONE IMPACT ATTENUATOR, 24" WIDE HAZARDS, (BIDIRECTIONAL) (WT: 39)	39	EACH	4.000
0028		614E12740	WORK ZONE LIGHTING SYSTEM (WT: 39)	39	EACH	1.000
0029		614E13310	BARRIER REFLECTOR, TYPE 1, (BIDIRECTIONAL) (WT: NR)	NR	EACH	27.000
0030		614E13360	OBJECT MARKER, TWO WAY (WT: NR)	NR	EACH	27.000
0031		614E22010	WORK ZONE EDGE LINE, CLASS I, 6" (WT: 39)	39	MILE	0.360
0032		614E26000	WORK ZONE STOP LINE, CLASS I (WT: 39)	39	FT	24.000
0033		615E10000	ROADS FOR MAINTAINING TRAFFIC (WT: 10)	10	LS	1.000
0034		615E20001	PAVEMENT FOR MAINTAINING TRAFFIC, CLASS A, AS PER PLAN (WT: 10)	10	SY	117.000
0035		622E41100	PORTABLE BARRIER, UNANCHORED (WT: 39)	39	FT	600.000

**Section 0007 STRUCTURE 20 FOOT SPAN AND UNDER (BRIDGE No. VIN-50-2874) SE E SHEET 21 OF 31**

Line	Alt	Item Code	Item Description	WT	Unit	Quantity
0036		202E11000	STRUCTURE REMOVED (WT: 23)	23	LS	1.000
0037		202E23500	WEARING COURSE REMOVED (WT: NR)	NR	SY	37.000
0038		503E11100	COFFERDAMS AND EXCAVATION BRACING (WT: 35)	35	LS	1.000
0039		503E21300	UNCLASSIFIED EXCAVATION (WT: 35)	35	LS	1.000
0040		509E10000	EPOXY COATED STEEL REINFORCEMENT (WT: 23)	23	LB	6,915.000
0041		511E46010	CLASS QC1 CONCRETE, RETAINING/WINGWALL NOT INCLUDING FOOTING (WT: 35)	35	CY	22.000
0042		511E46510	CLASS QC1 CONCRETE, FOOTING (WT: 35)	35	CY	54.000
0043		511E46610	CLASS QC1 CONCRETE, HEADWALL (WT: 35)	35	CY	2.000
0044		512E10050	SEALING OF CONCRETE SURFACES (NON-EPOXY) (WT: 57)	57	SY	76.000

Project Number: 240190

0045		512E33000	TYPE 2 WATERPROOFING (WT: 40)	40	SY	211.000
0046		516E13600	1" PREFORMED EXPANSION JOINT FILLER (WT: NR)	NR	SF	55.000
0047		518E21200	POROUS BACKFILL WITH GEOTEXTILE FABRIC (WT: 35)	35	CY	23.000
0048		611E95501	10' X 8' CONDUIT, TYPE A, 706.05, AS PER PLAN (WT: 35)	35	FT	57.000
0049		613E41300	LOW STRENGTH MORTAR BACKFILL (TYPE 2) (WT: NR)	NR	CY	172.000

**Section 0008 INCIDENTALS**

Line	Alt	Item Code	Item Description	WT	Unit	Quantity
0050		103E05000	PREMIUM FOR CONTRACT PERFORMANCE BOND AND FOR PAYMENT BOND (WT: NR)	NR	LS	1.000
0051		614E11000	MAINTAINING TRAFFIC (WT: 39)	39	LS	1.000
0052		623E10000	CONSTRUCTION LAYOUT STAKES AND SURVEYING (WT: NR)	NR	LS	1.000
0053		624E10000	MOBILIZATION (WT: NR)	NR	LS	1.000



General Decision Number: OH20240001 01/26/2024

Superseded General Decision Number: OH20230001

State: Ohio

Construction Types: Heavy and Highway

Counties: Ohio Statewide.

Heavy and Highway Construction Projects

Note: Contracts subject to the Davis-Bacon Act are generally required to pay at least the applicable minimum wage rate required under Executive Order 14026 or Executive Order 13658. Please note that these Executive Orders apply to covered contracts entered into by the federal government that are subject to the Davis-Bacon Act itself, but do not apply to contracts subject only to the Davis-Bacon Related Acts, including those set forth at 29 CFR 5.1(a)(1).

If the contract is entered into on or after January 30, 2022, or the contract is renewed or extended (e.g., an option is exercised) on or after January 30, 2022:	<ul style="list-style-type: none"><li>. Executive Order 14026 generally applies to the contract.</li><li>. The contractor must pay all covered workers at least \$17.20 per hour (or the applicable wage rate listed on this wage determination, if it is higher) for all hours spent performing on the contract in 2024.</li></ul>
If the contract was awarded on or between January 1, 2015 and January 29, 2022, and the contract is not renewed or extended on or after January 30, 2022:	<ul style="list-style-type: none"><li>. Executive Order 13658 generally applies to the contract.</li><li>. The contractor must pay all covered workers at least \$12.90 per hour (or the applicable wage rate listed on this wage determination, if it is higher) for all hours spent performing on that contract in 2024.</li></ul>

The applicable Executive Order minimum wage rate will be adjusted annually. If this contract is covered by one of the

Executive Orders and a classification considered necessary for performance of work on the contract does not appear on this wage determination, the contractor must still submit a conformance request.

Additional information on contractor requirements and worker protections under the Executive Orders is available at <http://www.dol.gov/whd/govcontracts>.

Modification Number	Publication Date
0	01/05/2024
1	01/26/2024

BROH001-001 06/01/2022

DEFIANCE, FULTON (Excluding Fulton, Amboy & Swan Creek Townships), HENRY (Excluding Monroe, Bartlow, Liberty, Washington, Richfield, Marion, Damascus & Townships & that part of Harrison Township outside corporate limits of city of Napoleon), PAULDING, PUTNAM and WILLIAMS COUNTIES

	Rates	Fringes
Bricklayer, Stonemason.....\$	31.40	18.55
-----		
BROH001-004 06/01/2022		

	Rates	Fringes
CEMENT MASON/CONCRETE FINISHER...\$	31.40	18.55
-----		
BROH003-002 06/01/2022		

FULTON (Townships of Amboy, Swan Creek & Fulton), HENRY (Townships of Washington, Damascus, Richfield, Bartlow, Liberty, Harrison, Monroe, & Marion), LUCAS and WOOD (Townships of Perrysburg, Ross, Lake, Troy, Freedom, Montgomery, Webster, Center, Portage, Middleton, Plain, Liberty, Henry, Washington, Weston, Milton, Jackson & Grand Rapids) COUNTIES

	Rates	Fringes
Bricklayer, Stonemason.....\$	31.40	18.55
-----		
BROH005-003 06/01/2020		

CUYAHOGA, LORAIN & MEDINA (Hinckley, Granger, Brunswick,

Liverpool, Montville, York, Homer, Harrisville, Chatham,  
Litchfield & Spencer Townships and the city of Medina)

	Rates	Fringes
BRICKLAYER		
BRICKLAYERS; CAULKERS; CLEANERS; POINTERS; & STONEMASONS.....	\$ 36.64	17.13
SANDBLASTERS.....	\$ 36.39	17.13
SEWER BRICKLAYERS & STACK BUILDERS.....	\$ 36.64	17.13
SWING SCAFFOLDS.....	\$ 37.14	17.13

-----  
BROH0006-005 06/01/2022

CARROLL, COLUMBIANA (Knox, Butler, West & Hanover Townships),  
STARK & TUSCARAWAS

	Rates	Fringes
Bricklayer, Stonemason.....	\$ 31.40	18.55

-----  
BROH0007-002 06/01/2022

LAWRENCE

	Rates	Fringes
Bricklayer, Stonemason.....	\$ 31.40	18.55

-----  
BROH0007-005 06/01/2022

PORTAGE & SUMMIT

	Rates	Fringes
BRICKLAYER.....	\$ 31.40	18.55

-----  
BROH0007-010 06/01/2017

PORTAGE & SUMMIT

	Rates	Fringes
MASON - STONE.....	\$ 28.65	14.55

-----  
BROH0008-001 06/01/2022

COLUMBIANA (Salem, Perry, Fairfield, Center, Elk Run, Middleton, & Unity Townships and the city of New Waterford), MAHONING & TRUMBULL

	Rates	Fringes
BRICKLAYER.....	\$ 31.40	18.55

-----  
 BROH0009-002 06/01/2022

BELMONT & MONROE COUNTIES and the Townships of Warren & Mt. Pleasant and the Village of Dillonvale in JEFFERSON COUNTY

	Rates	Fringes
Bricklayer, Stonemason.....	\$ 31.40	18.55
Refractory.....	\$ 31.45	19.01

-----  
 BROH0010-002 06/01/2022

COLUMBIANA (St. Clair, Madison, Wayne, Franklin, Washington, Yellow Creek & Liverpool Townships) & JEFFERSON (Brush Creek & Saline Townships)

	Rates	Fringes
Bricklayer, Stonemason.....	\$ 31.40	18.55

-----  
 BROH0014-002 06/01/2022

HARRISON & JEFFERSON (Except Mt. Pleasant, Warren, Brush Creek, Saline & Salineville Townships & the Village of Dillonvale)

	Rates	Fringes
Bricklayer, Stonemason.....	\$ 31.40	18.55

-----  
 BROH0016-002 06/01/2022

ASHTABULA, GEAUGA, and LAKE COUNTIES

	Rates	Fringes
Bricklayer, Stonemason.....	\$ 31.40	18.55

-----

BROH0018-002 06/01/2022

BROWN, BUTLER, CLERMONT, HAMILTON, PREBLE (Gasper, Dixon, Israel, Lanier, Somers & Gratis Townships) & WARREN COUNTIES:

	Rates	Fringes
Bricklayer, Stonemason.....	\$ 31.40	18.55

-----  
BROH0022-004 06/01/2022

CHAMPAIGN, CLARK, CLINTON, DARKE, GREENE, HIGHLAND, LOGAN, MIAMI, MONTGOMERY, PREBLE (Jackson, Monroe, Harrison, Twin, Jefferson & Washington Townships) and SHELBY COUNTIES

	Rates	Fringes
Bricklayer, Stonemason.....	\$ 31.40	18.55

-----  
BROH0032-001 06/01/2022

GALLIA & MEIGS

	Rates	Fringes
Bricklayer, Stonemason.....	\$ 31.40	18.55

-----  
BROH0035-002 06/01/2022

ALLEN, AUGLAIZE, MERCER and VAN WERT COUNTIES

	Rates	Fringes
Bricklayer, Stonemason.....	\$ 31.40	18.55

-----  
BROH0039-002 06/01/2022

ADAMS & SCIOTO

	Rates	Fringes
Bricklayer, Stonemason.....	\$ 31.40	18.55

-----  
BROH0040-003 06/01/2022

ASHLAND, CRAWFORD, HARDIN, HOLMES, MARION, MORROW, RICHLAND, WAYNE and WYANDOT (Except Crawford, Ridge, Richland & Tymochtee Townships) COUNTIES

	Rates	Fringes
Bricklayer, Stonemason.....	\$ 32.49	23.43

FOOTNOTE: Layout Man and Sawman rate: \$1.00 per hour above journeyman rate.

Free standing stack work ground level to top of stack; Sandblasting and laying of carbon masonry material in swing stage and/or scaffold; Ramming and spading of plastics and gunniting: \$1.50 per hour above journeyman rate.

""Hot"" work: \$2.50 above journeyman rate.

-----  
 BROH0044-002 06/01/2022

	Rates	Fringes
Bricklayer, Stonemason COSHOCTON, FAIRFIELD, GUERNSEY, HOCKING, KNOX, KICKING, MORGAN, MUSKINGUM, NOBLE (Beaver, Buffalo, Seneca & Wayne Townships) & PERRY COUNTIES:.....	\$ 31.40	18.55

-----  
 BROH0045-002 06/01/2021

FAYETTE, JACKSON, PIKE, ROSS and VINTON COUNTIES

	Rates	Fringes
Bricklayer, Stonemason.....	\$ 30.40	17.66

-----  
 BROH0046-002 06/01/2022

ERIE, HANCOCK, HURON, OTTAWA, SANDUSKY, SENECA, WOOD (Perry & Bloom Townships) and WYANDOT (Tymochtee, Crawford, Ridge & Richland Townships) COUNTIES & the Islands of Lake Erie north of Sandusky

	Rates	Fringes
Bricklayer, Stonemason.....	\$ 31.40	18.55

FOOTNOTE: Layout Man and Sawman rate: \$1.00 per hour above journeyman rate.

Free standing stack work ground level to top of stack;  
 Sandblasting and laying of carbon masonry material in swing  
 stage and/or scaffold; Ramming and spading of plastics and  
 gunniting: \$1.50 per hour above journeyman rate.  
 ""Hot"" work: \$2.50 above journeyman rate.

-----  
 BROH0052-001 06/01/2022

ATHENS COUNTY

	Rates	Fringes
Bricklayer, Stonemason.....	\$ 31.40	18.55

-----  
 BROH0052-003 06/01/2022

NOBLE (Brookfield, Noble, Center, Sharon, Olive, Enoch, Stock,  
 Jackson, Jefferson & Elk Townships) and WASHINGTON COUNTIES

	Rates	Fringes
Bricklayer, Stonemason.....	\$ 31.40	18.55

-----  
 BROH0055-003 06/01/2022

DELAWARE, FRANKLIN, MADISON, PICKAWAY and UNION COUNTIES

	Rates	Fringes
Bricklayer, Stonemason.....	\$ 31.40	18.55

-----  
 CARP0003-004 05/01/2017

MAHONING & TRUMBULL

	Rates	Fringes
CARPENTER.....	\$ 26.20	17.42

-----  
 CARP0069-003 05/01/2017

CARROLL, STARK, TUSCARAWAS & WAYNE

	Rates	Fringes
CARPENTER.....	\$ 25.98	15.98

-----  
 CARP0069-006 05/01/2017

COSHOCTON, HOLMES, KNOX & MORROW

	Rates	Fringes
CARPENTER.....	\$ 24.04	15.29

-----  
CARP0171-002 05/01/2019

BELMONT, COLUMBIANA, HARRISON, JEFFERSON & MONROE

	Rates	Fringes
CARPENTER.....	\$ 27.37	20.02

-----  
CARP0200-002 05/01/2023

ADAMS, ATHENS, DELAWARE, FAIRFIELD, FAYETTE, FRANKLIN, GALLIA,  
GUERNSEY, HIGHLAND, HOCKING, JACKSON, LAWRENCE, LICKING,  
MADISON, MARION, MEIGS, MORGAN, MUSKINGUM, NOBLE, PERRY,  
PICKAWAY, PIKE, ROSS, SCIOTO, UNION, VINTON and WASHINGTON  
COUNTIES

	Rates	Fringes
CARPENTER.....	\$ 32.42	21.42
Diver.....	\$ 39.41	10.40
PILEDRIVERMAN.....	\$ 32.42	21.42

-----  
CARP0248-005 07/01/2008

LUCAS & WOOD

	Rates	Fringes
CARPENTER.....	\$ 27.27	14.58

-----  
CARP0248-008 07/01/2008

	Rates	Fringes
CARPENTER DEFIANCE, FULTON, HANCOCK, HENRY, PAULDING & WILLIAMS COUNTIES.....	\$ 23.71	13.28

-----  
CARP0254-002 05/01/2017

ASHTABULA, CUYAHOGA, GEAUGA & LAKE



	Rates	Fringes
CARPENTER.....	\$ 32.40	16.97
-----		
CARP0372-002 05/01/2023		

ALLEN, AUGLAIZE, HARDIN, MERCER, PUTNAM & VAN WERT

	Rates	Fringes
CARPENTER.....	\$ 28.85	24.59
-----		
CARP0639-003 05/01/2017		

MEDINA, PORTAGE & SUMMIT

	Rates	Fringes
CARPENTER.....	\$ 30.42	16.99
-----		
* CARP0735-002 05/01/2023		

ASHLAND, ERIE, HURON, LORAIN & RICHLAND

	Rates	Fringes
CARPENTER.....	\$ 31.62	21.63
-----		
CARP1311-001 05/01/2017		

BROWN, BUTLER, CHAMPAIGN, CLARK, CLERMONT, CLINTON, DARKE,  
GREENE, HAMILTON, LOGAN, MIAMI, MONTGOMERY, PREBLE, SHELBY &  
WARREN

	Rates	Fringes
Carpenter & Piledrivermen.....	\$ 29.34	15.95
Diver.....	\$ 40.58	9.69
-----		
CARP1393-002 07/01/2008		

CRAWFORD, DEFIANCE, FULTON, HANCOCK, HENRY, LUCAS, OTTAWA,  
PAULDING, SANDUSKY, SENECA, WILLIAMS & WOOD

	Rates	Fringes
Piledrivermen & Diver's Tender....	\$ 27.30	16.05

DIVERS - \$250.00 per day

-----

CARP1393-003 07/01/2008

ALLEN, AUGLAIZE, HARDIN, MERCER, PUTNAM, VAN WERT & WYANDOT

	Rates	Fringes
Piledrivermen & Diver's Tender...	\$ 25.15	15.92

DIVERS - \$250.00 per day

-----

CARP1871-006 05/01/2017

BELMONT, HARRISON, & MONROE

	Rates	Fringes
Diver, Wet.....	\$ 48.11	17.33
Piledrivermen; Diver, Dry.....	\$ 32.07	17.33

-----

CARP1871-008 05/01/2017

ASHLAND, ASHTABULA, CUYAHOGA, ERIE, GEAUGA, HURON, LAKE, LORAIN, MEDINA, PORTAGE, RICHLAND & SUMMIT

	Rates	Fringes
Diver, Wet.....	\$ 45.80	18.84
Piledrivermen; Diver, Dry.....	\$ 30.53	18.84

-----

CARP1871-014 05/01/2017

CARROLL, STARK, TUSCARAWAS & WAYNE

	Rates	Fringes
Diver, Wet.....	\$ 38.34	16.95
Piledrivermen; Diver, Dry.....	\$ 25.56	16.95

-----

CARP1871-015 05/01/2017

COSHOCTON, HOLMES, KNOX & MORROW

	Rates	Fringes
Diver, Wet.....	\$ 37.34	16.07
Piledrivermen; Diver, Dry.....	\$ 24.89	16.07

-----  
CARP1871-017 05/01/2017

MAHONING & TRUMBULL

	Rates	Fringes
Diver, Wet.....	\$ 40.65	17.62
Piledrivermen; Diver, Dry.....	\$ 27.10	17.62

-----  
CARP2235-012 01/01/2014

COLUMBIANA & JEFFERSON

	Rates	Fringes
PILEDRIVERMAN.....	\$ 31.74	16.41

-----  
CARP2239-001 07/01/2008

CRAWFORD, OTTAWA, SANDUSKY, SENECA & WYANDOT

	Rates	Fringes
CARPENTER.....	\$ 23.71	13.28

-----  
ELEC0008-002 05/23/2022

DEFIANCE, FULTON, HANCOCK, HENRY, LUCAS, OTTAWA, PAULDING,  
PUTNAM, SANDUSKY, SENECA, WILLIAMS & WOOD

	Rates	Fringes
CABLE SPLICER.....	\$ 38.98	18.96
ELECTRICIAN.....	\$ 44.79	4.5%+21.61

-----  
ELEC0032-003 12/04/2023

ALLEN, AUGLAIZE, HARDIN, LOGAN, MERCER, SHELBY, VAN WERT &  
WYANDOT (Crawford, Jackson, Marseilles, Mifflin, Ridgeland,  
Ridge & Salem Townships)

	Rates	Fringes
ELECTRICIAN.....	\$ 35.17	22.82

-----  
ELEC0038-002 04/24/2023

CUYAHOGA, GEAUGA (Bainbridge, Chester & Russell Townships) &  
LORAIN (Columbia Township)

	Rates	Fringes
ELECTRICIAN		
Excluding Sound & Communications Work.....	\$ 43.13	23.31

FOOTNOTES;

- a. 6 Paid Holidays: New Year's Day; Memorial Day; July 4th;  
Labor Day; Thanksgiving Day; & Christmas Day
- b. 1 week's paid vacation for 1 year's service; 2 weeks' paid  
vacation for 2 or more years' service

-----  
ELEC0038-008 04/24/2023

CUYAHOGA, GEAUGA (Bainbridge, Chester & Russell Townships) &  
LORAIN (Columbia Township)

	Rates	Fringes
Sound & Communication Technician		
Communications Technician...	\$ 29.80	13.80
Installer Technician.....	\$ 28.55	13.76

FOOTNOTES;

- a. 6 Paid Holidays: New Year's Day; Memorial Day; July 4th;  
Labor Day; Thanksgiving Day; & Christmas Day
- b. 1 week's paid vacation for 1 year's service; 2 weeks' paid  
vacation for 2 or more years' service

-----  
ELEC0064-003 11/27/2023

COLUMBIANA (Butler, Fairfield, Perry, Salem & Unity Townships)  
MAHONING (Austintown, Beaver, Berlin, Boardman, Canfield,  
Ellsworth, Coitsville, Goshen, Green, Jackson, Poland,  
Springfield & Youngstown Townships), & TRUMBULL (Hubbard &  
Liberty Townships)

	Rates	Fringes
ELECTRICIAN.....	\$ 37.90	20.08

-----

ELEC0071-001 01/01/2019

ASHLAND, CHAMPAIGN, CLARK, COSHOCTON, CRAWFORD, DELAWARE, FAIRFIELD, FAYETTE, FRANKLIN, GUERNSEY, HIGHLAND, HOCKING, JACKSON (Coal, Jackson, Liberty, Milton, Washington & Wellston Townships), KNOX, LICKING, MADISON, MARION, MONROE, MORGAN, MORROW, MUSKINGUM, NOBLE, PERRY, PICKAWAY, PIKE (Beaver, Benton, Jackson, Mifflin, Pebble, Peepee, Perry & Seal Townships), RICHLAND, ROSS, TUSCARAWAS (Auburn, Bucks, Clay, Jefferson, Oxford, Perry, Salem, Rush, Washington & York Townships), UNION, VINTON (Clinton, Eagle, Elk, Harrison, Jackson, Richland & Swan Townships), and WASHINGTON COUNTIES

	Rates	Fringes
Line Construction		
Equipment Operators.....	\$ 33.62	13.40
Groundmen.....	\$ 24.17	11.32
Linemen & Cable Splicers....	\$ 38.27	14.42

-----  
ELEC0071-004 01/01/2019

AUGLAIZE, CLINTON, DARKE, GREENE, LOGAN, MERCER, MIAMI, MONTGOMERY, PREBLE, and SHELBY COUNTIES

	Rates	Fringes
Line Construction		
Equipment Operator.....	\$ 33.62	13.40
Groundman.....	\$ 24.17	11.32
Lineman & Cable Splicers....	\$ 38.27	14.42

-----  
ELEC0071-005 12/31/2018

ASHTABULA, CUYAHOGA, GEAUGA, LAKE & LORAIN

	Rates	Fringes
LINE CONSTRUCTION: Equipment Operator		
DOT/Traffic Signal & Highway Lighting Projects...	\$ 32.44	14.10
Municipal Power/Transit Projects.....	\$ 40.10	16.42
LINE CONSTRUCTION: Groundman		
DOT/Traffic Signal & Highway Lighting Projects...	\$ 25.06	12.26
Municipal Power/Transit		

Projects.....	\$ 31.19	14.11
LINE CONSTRUCTION:		
Linemen/Cable Splicer		
DOT/Traffic Signal & Highway Lighting Projects...	\$ 36.13	15.03
Municipal Power/Transit Projects.....	\$ 44.56	17.58

-----  
ELEC0071-008 01/01/2019

COLUMBIANA, MAHONING, and TRUMBULL COUNTIES

	Rates	Fringes
Line Construction		
Equipment Operator.....	\$ 33.62	13.40
Groundman.....	\$ 24.17	11.32
Lineman & Cable Splicers....	\$ 38.27	14.42

-----  
ELEC0071-010 01/01/2019

BELMONT, CARROLL, HARRISON, HOLMES, JEFFERSON, MEDINA, PORTAGE,  
STARK, SUMMIT, and WAYNE COUNTIES

	Rates	Fringes
Line Construction		
Equipment Operator.....	\$ 33.62	13.40
Groundman.....	\$ 24.17	11.32
Lineman & Cable Splicers....	\$ 38.27	14.42

-----  
ELEC0071-013 01/01/2019

BROWN, BUTLER, CLERMONT, HAMILTON, and WARREN COUNTIES

	Rates	Fringes
Line Construction		
Equipment Operator.....	\$ 33.62	13.40
Groundman.....	\$ 24.17	11.32
Lineman & Cable Splicers....	\$ 38.27	14.42

-----  
ELEC0071-014 01/01/2019

ADAMS, ATHENS, GALLIA, JACKSON (Bloomfield, Franklin, Hamilton,  
Lick, Jefferson, Scioto & Madison Townships), LAWRENCE, MEIGS,  
PIKE (Camp Creek, Marion, Newton, Scioto, Sunfish & Union  
Townships), SCIOTO & VINTON (Brown, Knox, Madison, Vinton &  
Wilkesville Townships)

	Rates	Fringes
Line Construction		
Equipment Operator.....	\$ 33.62	13.40
Groundman.....	\$ 24.17	11.32
Lineman & Cable Splicers....	\$ 38.27	14.42

-----  
 ELEC0082-002 12/05/2022

CLINTON, DARKE, GREENE, MIAMI, MONTGOMERY, PREBLE & WARREN  
 (Wayne, Clear Creek & Franklin Townships)

	Rates	Fringes
ELECTRICIAN.....	\$ 34.25	21.26

-----  
 \* ELEC0082-006 11/28/2022

CLINTON, DARKE, GREENE, MIAMI, MONTGOMERY, PREBLE & WARREN  
 (Wayne, Clear Creek & Franklin Townships)

	Rates	Fringes
Sound & Communication Technician		
Cable Puller.....	\$ 13.10 **	4.76
Installer/Technician.....	\$ 26.20	13.89

-----  
 ELEC0129-003 02/27/2023

LORAIN (Except Columbia Township) & MEDINA (Litchfield &  
 Liverpool Townships)

	Rates	Fringes
ELECTRICIAN.....	\$ 39.30	18.30

-----  
 ELEC0129-004 02/27/2023

ERIE & HURON (Lyme, Ridgefield, Norwalk, Townsend, Wakeman,  
 Sherman, Peru, Bronson, Hartland, Clarksfield, Norwich,  
 Greenfield, Fairfield, Fitchville & New London Townships)

Rates	Fringes
-------	---------

ELECTRICIAN.....\$ 39.30 18.30

-----  
ELEC0141-003 09/01/2019

BELMONT COUNTY

	Rates	Fringes
CABLE SPLICER.....	\$ 30.63	25.87
ELECTRICIAN.....	\$ 30.38	25.87

-----  
ELEC0212-003 11/26/2018

BROWN, CLERMONT & HAMILTON

	Rates	Fringes
Sound & Communication Technician.....	\$ 24.35	10.99

-----  
ELEC0212-005 06/05/2023

BROWN, CLERMONT, and HAMILTON COUNTIES

	Rates	Fringes
ELECTRICIAN.....	\$ 34.41	21.55

-----  
ELEC0245-001 08/29/2022

ALLEN, HARDIN, VAN WERT & WYANDOT (Crawford, Jackson, Marseilles, Mifflin, Richland, Ridge & Salem Townships)

	Rates	Fringes
Line Construction		
Equipment Operator.....	\$ 32.37	26.5%+7.25
Groundman Truck Driver.....	\$ 19.35	7.00+27.25%
Lineman.....	\$ 44.22	7.00+27.25%

FOOTNOTE: a. Half day's Paid Holiday: The last 4 hours of the workday prior to Christmas or New Year's Day

-----  
ELEC0245-003 08/29/2022

DEFIANCE, FULTON, HANCOCK, HENRY, HURON, LUCAS, OTTAWA, PAULDING, PUTNAM, SANDUSKY, SENECA, WILLIAMS, and WOOD COUNTIES



	Rates	Fringes
Line Construction		
Cable Splicer.....	\$ 50.85	7.00+27.25%
Groundman/Truck Driver.....	\$ 19.35	7.00+27.25%
Heli-arc Welding.....	\$ 40.76	7.00+27.25%
Lineman.....	\$ 44.22	7.00+27.25%
Operator - Class 1.....	\$ 35.38	7.00+27.25%
Operator - Class 2.....	\$ 28.32	7.00+27.25%
Traffic Signal & Lighting Technician.....	\$ 39.80	7.00+27.25%

FOOTNOTE: a. 6 Observed Holidays: New Year's Day; Memorial Day; Independence Day; Labor Day; Thanksgiving Day; & Christmas Day. Employees who work on a holiday shall be paid at a rate of double their applicable classified straight-time rates for the work performed on such holiday.

-----  
ELEC0245-004 08/28/2023

ERIE COUNTY

	Rates	Fringes
Line Construction		
Cable Splicer.....	\$ 49.14	26.75%+6.75
Cablesplicer.....	\$ 52.76	27%+7.50
Groundman/Truck Driver.....	\$ 20.07	27%+7.50
Lineman.....	\$ 45.88	27%+7.50
Operator - Class 1.....	\$ 36.70	27%+7.50
Operator - Class 2.....	\$ 32.12	27%+7.50

FOOTNOTE: a. 6 Observed Holidays: New Year's Day; Memorial Day; Independence Day; Labor Day; Thanksgiving Day; & Christmas Day. Employees who work on a holiday shall be paid at a rate of double their applicable classified straight-time rates for the work performed on such holiday.

-----  
ELEC0246-001 10/31/2022

	Rates	Fringes
ELECTRICIAN.....	\$ 40.50	84%+36.47

FOOTNOTE: a. 1 1/2 Paid Holidays: The last scheduled workday prior to Christmas & 4 hours on Good Friday.

-----  
ELEC0306-005 05/29/2023

MEDINA (Brunswick, Chatham, Granger, Guilford, Harrisville, Hinckley, Homer, Lafayette, Medina, Montville, Sharon, Spencer, Wadsworth, Westfield & York Townships), PORTAGE (Atwater, Aurora, Brimfield, Deerfield, Franklin, Mantua, Randolph, Ravenna, Rootstown, Shalersville, Streetsboro & Suffield Townships), SUMMIT & WAYNE (Baughman, Canaan, Chester, Chippewa, Congress, Green, Milton, & Wayne Townships)

	Rates	Fringes
CABLE SPLICER.....	\$ 36.87	16.56
ELECTRICIAN.....	\$ 40.15	5.25%+20.85

-----  
ELEC0317-002 05/29/2023

GALLIA & LAWRENCE

	Rates	Fringes
CABLE SPLICER.....	\$ 32.68	18.13
ELECTRICIAN.....	\$ 37.15	28.48

-----  
ELEC0540-005 12/26/2022

CARROLL (Northern half, including Fox, Harrison, Rose & Washington Townships), COLUMBIANA (Knox Township), HOLMES, MAHONING (Smith Township), STARK, TUSCARAWAS (North of Auburn, Clay, Rush & York Townships), and WAYNE (South of Baughman, Chester, Green & Wayne Townships) COUNTIES

	Rates	Fringes
ELECTRICIAN.....	\$ 36.28	27.04

-----  
ELEC0573-003 06/05/2023

ASHTABULA (Colebrook, Wayne, Williamsfield, Orwell & Windsor Townships), GEAUGA (Auburn, Middlefield, Parkman & Troy Townships), MAHONING (Milton Township), PORTAGE (Charlestown, Edinburg, Freedom, Hiram, Nelson, Palmyra, Paris & Windham Townships), and TRUMBULL (Except Liberty & Hubbard Townships)

	Rates	Fringes
--	-------	---------

ELECTRICIAN.....\$ 38.70 21.07

-----  
ELEC0575-001 05/29/2023

ADAMS, FAYETTE, HIGHLAND, HOCKING, JACKSON (Bloomfield, Franklin, Hamilton, Jefferson, Lick, Madison, Scioto, Coal, Jackson, Liberty, Milton & Washington Townships), PICKAWAY (Deer Creek, Perry, Pickaway, Salt Creek & Wayne Townships), PIKE (Beaver, Benton, Jackson, Mifflin, Pebble, PeePee, Perry, Seal, Camp Creek, Newton, Scioto, Sunfish, Union & Marion Townships), ROSS, SCIOTO & VINTON (Clinton, Eagle, Elk, Harrison, Jackson, Richland & Swan Townships)

Rates Fringes

ELECTRICIAN.....\$ 36.50 21.76

-----  
ELEC0648-001 08/29/2022

BUTLER and WARREN COUNTIES (Deerfield, Hamilton, Harlan, Massie, Salem, Turtle Creek, Union & Washington Townships)

Rates Fringes

CABLE SPLICER.....\$ 30.50 18.23

ELECTRICIAN.....\$ 33.00 21.44

-----  
ELEC0673-004 05/29/2023

ASHTABULA (Excluding Orwell, Colebrook, Williamsfield, Wayne & Windsor Townships), GEAUGA (Burton, Chardon, Claridon, Hambden, Huntsburg, Montville, Munson, Newbury & Thompson Townships) and LAKE COUNTIES

Rates Fringes

CABLE SPLICER.....\$ 33.81 21.47

ELECTRICIAN.....\$ 37.55 23.58

-----  
ELEC0683-002 05/29/2023

CHAMPAIGN, CLARK, DELAWARE, FAIRFIELD, FRANKLIN, MADISON, PICKAWAY (Circleville, Darby, Harrison, Jackson, Madison, Monroe, Muhlenberg, Scioto, Walnut & Washington Townships), and UNION COUNTIES

	Rates	Fringes
CABLE SPLICER.....	\$ 38.75	24.19
ELECTRICIAN.....	\$ 37.75	24.16

-----  
 ELEC0688-003 05/30/2022

ASHLAND, CRAWFORD, HURON (Richmond, New Haven, Ripley & Greenwich Townships), KNOX (Liberty, Clinton, Union, Howard, Monroe, Middleberry, Morris, Wayne, Berlin, Pike, Brown & Jefferson Townships), MARION, MORROW, RICHLAND and WYANDOT (Sycamore, Crane, Eden, Pitt, Antrim & Tymochtee Townships) COUNTIES

	Rates	Fringes
ELECTRICIAN.....	\$ 32.30	21.83

-----  
 ELEC0972-002 06/01/2023

ATHENS, MEIGS, MONROE, MORGAN, NOBLE, VINTON (Brown, Knox, Madison, Vinton & Wilkesville Townships), and WASHINGTON COUNTIES

	Rates	Fringes
CABLE SPLICER.....	\$ 35.70	30.26
ELECTRICIAN.....	\$ 35.45	30.25

-----  
 ELEC1105-001 05/29/2023

COSHOCTON, GUERNSEY, KNOX (Jackson, Clay, Morgan, Miller, Milford, Hilliar, Butler, Harrison, Pleasant & College Townships), LICKING, MUSKINGUM, PERRY, and TUSCARAWAS (Auburn, York, Clay, Jefferson, Rush, Oxford, Washington, Salem, Perry & Bucks Townships) COUNTIES

	Rates	Fringes
ELECTRICIAN.....	\$ 36.45	24.22

-----  
 ENGI0018-003 05/01/2019

ASHTABULA, CUYAHOGA, ERIE, GAUGA, LAKE, LORAIN, MEDINA, PORTAGE, and SUMMIT COUNTIES

	Rates	Fringes
POWER EQUIPMENT OPERATOR		
GROUP 1.....	\$ 38.63	15.20
GROUP 2.....	\$ 38.53	15.20
GROUP 3.....	\$ 37.49	15.20
GROUP 4.....	\$ 36.27	15.20
GROUP 5.....	\$ 30.98	15.20
GROUP 6.....	\$ 38.88	15.20
GROUP 7.....	\$ 39.13	15.20

#### OPERATING ENGINEER CLASSIFICATIONS

GROUP 1 - Air Compressor on Steel Erection; Barrier Moving Machine; Boiler Operator on Compressor or Generator when mounted on a Rig; Cableway; Combination Concrete Mixer & Tower; Concrete Plant (over 4 yd. Capacity); Concrete Pump; Crane (All Types, Including Boom Truck, Cherry Picker); Crane-Compact, Track or Rubber over 4,000 lbs. capacity; Cranes-Self Erecting, Stationary, Track or Truck (All Configurations); Derrick; Dragline; Dredge (Dipper, Clam or Suction); Elevating Grader or Euclid Loader; Floating Equipment (All Types); Gradall; Helicopter Crew (Operator-Hoist or Winch); Hoe (all types); Hoisting Engine on Shaft or Tunnel Work; Hydraulic Gantry (Lifting System); Industrial-Type Tractor; Jet Engine Dryer (D8 or D9) Diesel Tractor; Locomotive (Standard Gauge); Maintenance Operator Class A; Mixer, Paving (Single or Double Drum); Mucking Machine; Multiple Scraper; Piledriving Machine (All Types); Power Shovel; Prentice Loader; Quad 9 (Double Pusher); Rail Tamper (with auto lifting & aligning device); Refrigerating Machine (Freezer Operation); Rotary Drill, on Caisson work; Rough Terrain Fork Lift with Winch/Hoist; Side-Boom; Slip-Form Paver; Tower Derrick; Tree Shredder; Trench Machine (Over 24" wide); Truck Mounted Concrete Pump; Tug Boat; Tunnel Machine and/or Mining Machine; Wheel Excavator; and Asphalt Plant Engineer (Cleveland District Only).

GROUP 2 - Asphalt Paver; Automatic Subgrader Machine, Self-Propelled (CMI Type); Bobcat Type and/or Skid Steer Loader with Hoe Attachment Greater than 7,000 lbs.; Boring Machine More than 48"; Bulldozer; Endloader; Horizontal Directional Drill (Over 50,000 ft lbs thrust); Hydro Milling Machine; Kolman-type Loader (production type-Dirt); Lead Greaseman; Lighting & Traffic Signal Installation Equipment (includes all groups or classifications); Material Transfer Equipment (Shuttle Buggy) Asphalt; Pettibone-Rail Equipment; Power Grader; Power Scraper; Push

Cat; Rotomill (all), Grinders & Planers of All types; Trench Machine (24" wide & under); Vermeer type Concrete Saw; and Maintenance Operators (Portage and Summit Counties Only).

GROUP 3 - A-Frame; Air Compressor on Tunnel Work (low pressure); Asphalt Plant Engineer (Portage and Summit Counties Only); Bobcat-type and/or Skid Steer Loader with or without Attachments; Highway Drills (all types); Locomotive (narrow gauge); Material Hoist/Elevator; Mixer, Concrete (more than one bag capacity); Mixer, one bag capacity (Side Loader); Power Boiler (Over 15 lbs. Pressure) Pump Operator installing & operating Well Points; Pump (4" & over discharge); Roller, Asphalt; Rotovator (lime soil stabilizer); Switch & Tie Tampers (without lifting & aligning device); Utility Operator (Small equipment); Welding Machines; and Railroad Tie Inserter/Remover; Articulating/straight bed end dumps if assigned (minus \$4.00 per hour).

GROUP 4 - Backfiller; Ballast Re-locator; Bars, Joint & Mesh Installing Machine; Batch Plant; Boring Machine Operator (48" or less); Bull Floats; Burlap & Curing Machine; Concrete Plant (capacity 4 yd. & under); Concrete Saw (Multiple); Conveyor (Highway); Crusher; Deckhand; Farm-type Tractor with attachments (highway); Finishing Machine; Fireperson, Floating Equipment (all types); Forklift; Form Trencher; Hydro Hammer expect masonry; Hydro Seeder; Pavement Breaker; Plant Mixer; Post Driver; Post Hole Digger (Power Auger); Power Brush Burner; Power Form Handling Equipment; Road Widening Trencher; Roller (Brick, Grade & Macadam); Self-Propelled Power Spreader; Self-Propelled Power Subgrader; Steam Fireperson; Tractor (Pulling Sheepfoot, Roller or Grader); and Vibratory Compactor with Integral Power.

GROUP 5 - Compressor (Portable, Sewer, Heavy & Highway); Drum Fireperson (Asphalt Plant); Generator; Masonry Fork Lift; Inboard-Outboard Motor Boat Launch; Oil Heater (asphalt plant); Oiler/Helper; Power Driven Heater; Power Sweeper & Scrubber; Pump (under 4" discharge); Signalperson; Tire Repairperson; VAC/ALLS; Cranes - Compact, track or rubber under 4,000 pound capacity; fueling and greasing; and Chainmen.

GROUP 6 - Master Mechanic & Boom from 150 to 180.

GROUP 7 - Boom from 180 and over.

---

ADAMS, ALLEN, ASHLAND, ATHENS, AUGLAIZE, BELMONT, BROWN, BUTLER, CARROLL, CHAMPAIGN, CLARK, CLERMONT, CLINTON, COSHOCTON, CRAWFORD, DARKE, DEFIANCE, DELAWARE, FAIRFIELD, FAYETTE, FRANKLIN, FULTON, GALLIA, GREENE, GUERNSEY, HAMILTON, HANCOCK, HARDIN, HARRISON, HENRY, HIGHLAND, HOCKING, HOLMES, HURON, JACKSON, JEFFERSON, KNOX, LAWRENCE, LICKING, LOGAN, LUCAS, MADISON, MARION, MEIGS, MERCER, MIAMI, MONROE, MONTGOMERY, MORGAN, MORROW, MUSKINGUM, NOBLE, OTTAWA, PAULDING, PERRY, PICKAWAY, PIKE, PREBLE, PUTNAM, RICHLAND, ROSS, SANDUSKY, SCIOTO, SENECA, SHELBY, STARK, TUSCARAWAS, UNION, VAN WERT, VINTON, WARREN, WASHINGTON, WAYNE, WILLIAMS, WOOD, and YANDOT COUNTIES

	Rates	Fringes
POWER EQUIPMENT OPERATOR		
GROUP 1.....	\$ 37.14	15.20
GROUP 2.....	\$ 37.02	15.20
GROUP 3.....	\$ 35.98	15.20
GROUP 4.....	\$ 34.80	15.20
GROUP 5.....	\$ 29.34	15.20
GROUP 6.....	\$ 37.39	15.20
GROUP 7.....	\$ 37.64	15.20

OPERATING ENGINEER CLASSIFICATIONS

GROUP 1 - Air Compressor on Steel Erection; Barrier Moving Machine; Boiler Operator on Compressor or Generator when mounted on a Rig; Cableway; Combination Concrete Mixer & Tower; Concrete Plant (over 4 yd. Capacity); Concrete Pump; Crane (All Types, Including Boom Truck, Cherry Picker); Crane-Compact, Track or Rubber over 4,000 lbs. capacity; Cranes-Self Erecting, Stationary, Track or Truck (All Configurations); Derrick; Dragline; Dredge (Dipper, Clam or Suction); Elevating Grader or Euclid Loader; Floating Equipment (All Types); Gradall; Helicopter Crew (Operator-Hoist or Winch); Hoe (all types); Hoisting Engine on Shaft or Tunnel Work; Hydraulic Gantry (Lifting System); Industrial-Type Tractor; Jet Engine Dryer (D8 or D9) Diesel Tractor; Locomotive (Standard Gauge); Maintenance Operator Class A; Mixer, Paving (Single or Double Drum); Mucking Machine; Multiple Scraper; Piledriving Machine (All Types); Power Shovel; Prentice Loader; Quad 9 (Double Pusher); Rail Tamper (with auto lifting & aligning device); Refrigerating Machine (Freezer Operation); Rotary Drill, on Caisson work; Rough Terrain Fork Lift with Winch/Hoist; Side-Boom; Slip-Form Paver;

Tower Derrick; Tree Shredder; Trench Machine (Over 24" wide); Truck Mounted Concrete Pump; Tug Boat; Tunnel Machine and/or Mining Machine; and Wheel Excavator.

GROUP 2 - Asphalt Paver; Automatic Subgrader Machine, Self-Propelled (CMI Type); Bobcat Type and/or Skid Steer Loader with Hoe Attachment Greater than 7,000 lbs.; Boring Machine More than 48"; Bulldozer; Endloader; Hydro Milling Machine; Horizontal Directional Drill (over 50,000 ft. lbs. thrust); Kolman-type Loader (production type-Dirt); Lead Greaseman; Lighting & Traffic Signal Installation Equipment (includes all groups or classifications); Material Transfer Equipment (Shuttle Buggy) Asphalt; Pettibone-Rail Equipment; Power Grader; Power Scraper; Push Cat; Rotomill (all), Grinders & Planers of All types; Trench Machine (24" wide & under); and Vermeer type Concrete Saw.

GROUP 3 - A-Frame; Air Compressor on Tunnel Work (low pressure); Asphalt Plant Engineer; Bobcat-type and/or Skid Steer Loader with or without Attachments; Highway Drills (all types); Locomotive (narrow gauge); Material Hoist/Elevator; Mixer, Concrete (more than one bag capacity); Mixer, one bag capacity (Side Loader); Power Boiler (Over 15 lbs. Pressure) Pump Operator installing & operating Well Points; Pump (4" & over discharge); Railroad Tie Inserter/Remover; Roller, Asphalt; Rotovator (lime soil stabilizer); Switch & Tie Tampers (without lifting & aligning device); Utility Operator (Small equipment); and Welding Machines; Articulating/straight bed end dumps if assigned (minus \$4.00 per hour).

GROUP 4 - Backfiller; Ballast Re-locator; Bars, Joint & Mesh Installing Machine; Batch Plant; Boring Machine Operator (48" or less); Bull Floats; Burlap & Curing Machine; Concrete Plant (capacity 4 yd. & under); Concrete Saw (Multiple); Conveyor (Highway); Crusher; Deckhand; Farm-type Tractor with attachments (highway); Finishing Machine; Fireperson, Floating Equipment (all types); Fork Lift; Form Trencher; Hydro Hammer expect masonry; Hydro Seeder; Pavement Breaker; Plant Mixer; Post Driver; Post Hole Digger (Power Auger); Power Brush Burner; Power Form Handling Equipment; Road Widening Trencher; Roller (Brick, Grade & Macadam); Self-Propelled Power Spreader; Self-Propelled Power Subgrader; Steam Fireperson; Tractor (Pulling Sheepfoot, Roller or Grader); and Vibratory Compactor with Integral Power.

GROUP 5 - Compressor (Portable, Sewer, Heavy & Highway); Drum Fireperson (Asphalt Plant); Generator; Masonary Forklift; Inboard-Outboard Motor Boat Launch; Oil Heater (asphalt



plant); Oiler/Helper; Power Driven Heater; Power Sweeper & Scrubber; Pump (under 4" discharge); Signalperson; Tire Repairperson; VAC/ALLS; Cranes - Compact, track or rubber under 4,000 pound capacity; fueling and greasing; and Chainmen.

GROUP 6 - Master Mechanic & Boom from 150 to 180.

GROUP 7 - Boom from 180 and over.

-----  
 ENGI0066-023 06/01/2017

COLUMBIANA, MAHONING & TRUMBULL COUNTIES

	Rates	Fringes
POWER EQUIPMENT OPERATOR		
ASBESTOS; HAZARDOUS/TOXIC WASTE PROJECTS		
GROUP 1 - A & B.....	\$ 39.23	19.66
ASBESTOS; HAZARDOUS/TOXIC WASTE PROJECTS		
GROUP 2 - A & B.....	\$ 38.90	19.66
ASBESTOS; HAZARDOUS/TOXIC WASTE PROJECTS		
GROUP 3 - A & B.....	\$ 34.64	19.66
ASBESTOS; HAZARDOUS/TOXIC WASTE PROJECTS		
GROUP 4 - A & B.....	\$ 30.70	19.66
ASBESTOS; HAZARDOUS/TOXIC WASTE PROJECTS		
GROUP 5 - A & B.....	\$ 27.30	19.66
HAZARDOUS/TOXIC WASTE PROJECTS		
GROUP 1 - C & D.....	\$ 35.96	19.66
HAZARDOUS/TOXIC WASTE PROJECTS		
GROUP 2 - C & D.....	\$ 35.66	19.66
HAZARDOUS/TOXIC WASTE PROJECTS		
GROUP 3 - C & D.....	\$ 31.76	19.66
HAZARDOUS/TOXIC WASTE PROJECTS		
GROUP 4 - C & D.....	\$ 28.14	19.66
HAZARDOUS/TOXIC WASTE PROJECTS		
GROUP 5 - C & D.....	\$ 25.03	19.66
ALL OTHER WORK		
GROUP 1.....	\$ 32.69	19.66

ALL OTHER WORK		
GROUP 2.....	\$ 32.42	19.66
ALL OTHER WORK		
GROUP 3.....	\$ 28.87	19.66
ALL OTHER WORK		
GROUP 4.....	\$ 25.58	19.66
ALL OTHER WORK		
GROUP 5.....	\$ 22.75	19.66

GROUP 1 - Rig, Pile Driver or Caisson Type; & Rig, Pile Hydraulic Unit Attached

GROUP 2 - Asphalt Heater Planer; Backfiller with Drag Attachment; Backhoe; Backhoe with Shear attached; Backhoe-Rear Pivotal Swing; Batch Plant-Central Mix Concrete; Batch Plant, Portable concrete; Berm Builder-Automatic; Boat Derrick; Boat-Tug; Boring Machine Attached to Tractor; Bullclam; Bulldozer; C.M.I. Road Builder & Similar Type; Cable Placer & Layer; Carrier-Straddle; Carryall-Scraper or Scoop; Chicago Boom; Compactor with Blade Attached; Concrete Saw (Vermeer or similar type); Concrete Spreader Finisher; Combination, Bidwell Machine; Crane; Crane-Electric Overhead; Crane-Rough Terrain; Crane-Side Boom; Crane-Truck; Crane-Tower; Derrick-Boom; Derrick-Car; Digger-Wheel (Not trencher or road widener); Double Nine; Drag Line; Dredge; Drill-Kenny or Similar Type; Easy Pour Median Barrier Machine (or similar type); Electromatic; Frankie Pile; Gradall; Grader; Gurry; Self-Propelled; Heavy Equipment Robotics Operator/Mechanic; Hoist-Monorail; Hoist-Stationary & Mobile Tractor; Hoist, 2 or 3 drum; Horizontal Directional Drill Operator; Jackall; Jumbo Machine; Kocal & Kuhlman; Land-Seagoing Vehicle; Loader, Elevating; Loader, Front End; Loader, Skid Steer; Locomotive; Mechanic/Welder; Metro Chip Harvester with Boom; Mucking Machine; Paver-Asphalt Finishing Machine; Paver-Road Concrete; Paver-Slip Form (C.M.I. or similar); Place Crete Machine with Boom; Post Driver (Carrier mounted); Power Driven Hydraulic Pump & Jack (When used in Slip Form or Lift Slab Construction); Pump Crete Machine; Regulator-Ballast; Hydraulic Power Unit not attached to Rig for Pile Drillings; Rigs-Drilling; Roto Mill or similar Full Lane (8' Wide & Over); Roto Mill or similar type (Under 8'); Shovel; Slip Form Curb Machine; Speedwing; Spikemaster; Stonecrusher; Tie Puller & Loader; Tie Tamper; Tractor-Double Boom; Tractor with Attachments; Truck-Boom; Truck-Tire; Trench Machine; Tunnel Machine (Mark 21 Java or similar); & Whirley (or similar type)

GROUP 3 - Asphalt Plant; Bending Machine (Pipeline or similar

type); Boring machine, Motor Driven; Chip Harvester without Boom; Cleaning Machine, Pipeline Type; Coating Machine, Pipeline Type; Compactor; Concrete Belt Placer; Concrete Finisher; Concrete Planer or Asphalt; Concrete Spreader; Elevator; Fork Lift (Home building only); Fork lift & Lulls; Fork Lift Walk Behind (Hoisting over 1 buck high); Form Line Machine; Grease Truck operator; Grout Pump; Gunnite Machine; Horizontal Directional Drill Locator; Single Drum Hoist with or without Tower; Huck Bolting Machine; Hydraulic Scaffold (Hoisting building materials); Paving Breaker (Self-propelled or Ridden); Pipe Dream; Pot Fireperson (Power Agitated); Refrigeration Plant; Road Widener; Roller; Sasgen Derrick; Seeding Machine; Soil Stabilizer (Pump type); Spray Cure Machine, Self-Propelled; Straw Blower Machine; Sub-Grader; Tube Finisher or Broom C.M.I. or similar type; & Tugger Hoist

GROUP 4 - Air Curtain Destructor & Similar Type; Batch Plant-Job Related; Boiler Operator; Compressor; Conveyor; Curb Builder, self-propelled; Drill Wagon; Generator Set; Generator-Steam; Heater-Portable Power; Hydraulic Manipulator Crane; Jack-Hydraulic Power driven; Jack-Hydraulic (Railroad); Ladavator; Minor Machine Operator; Mixer-Concrete; Mulching Machine; Pin Puller; Power Broom; Pulverizer; Pump; Road Finishing Machine (Pull Type); Saw-Concrete-Self-Propelled (Highway Work); Signal Person; Spray Cure Machine-Motor Powered; Stump Cutter; Tractor; Trencher Form; Water Blaster; Steam Jenny; Syphon; Vibrator-Gasoline; & Welding Machine

GROUP 5 - Brakeperson; Fireperson; & Oiler

-----  
 IRON0017-002 05/01/2023

ASHTABULA (North of Route 6, starting at the Geauga County Line, proceeding east to State Route 45), CUYAHOGA, ERIE (Eastern 2/3), GEAUGA, HURON (East of a line drawn from the north border through Monroeville & Willard), LAKE, LORAIN, MEDINA (North of Old Rte. #224), PORTAGE (West of a line from Middlefield to Shalersville to Deerfield), and SUMMIT (North of Old Rte. #224, including city limits of Barberton) COUNTIES

	Rates	Fringes
IRONWORKER		
Ornamental, Reinforcing, & Structural.....	\$ 35.83	28.01

-----

IRON0017-010 05/01/2023

ASHTABULA (Eastern part from Lake Erie on the north to route #322 on the south to include Conneaut, Kingsville, Sheffield, Denmark, Dorset, Cherry Valley, Wayne, Monroe, Pierpont, Richmond, Andover & Williamsfield Townships)

	Rates	Fringes
IRONWORKER		
Structural, including metal building erection & Reinforcing.....	\$ 35.83	28.01

-----  
IRON0044-001 06/01/2022

ADAMS (Western Part), BROWN, BUTLER (Southern Part), CLERMONT, CLINTON (South of a line drawn from Blanchester to Lynchburg), HAMILTON, HIGHLAND (Excluding eastern one-fifth & portion of county inside lines drawn from Marshall to Lynchburg from the northern county line through E. Monroe to Marshall) and WARREN (South of a line drawn from Blanchester through Morrow to the west county line) COUNTIES

	Rates	Fringes
IRONWORKER, REINFORCING.....	\$ 32.37	22.30
Beyond 30-mile radius of Hamilton County Courthouse..	\$ 28.67	21.20
Up to & including 30-mile radius of Hamilton County Courthouse.....	\$ 27.60	20.70

-----  
IRON0044-002 06/01/2023

CLINTON (South of a line drawn from Blanchester to Lynchburg), HAMILTON, HIGHLAND (Excluding eastern one-fifth & portion of county inside lines drawn from Marshall to Lynchburg from the northern county line through E. Monroe to Marshall) & WARREN (South of a line drawn from Blanchester through Morrow to the west county line)

	Rates	Fringes
IRONWORKER		
Fence Erector.....	\$ 30.75	23.30
Ornamental; Structural.....	\$ 32.37	23.30

-----  
 IRON0055-003 07/01/2023

CRAWFORD (Area Between lines drawn from where Hwy #598 & #30 meet through N. Liberty to the northern border & from said Hwy junction point due west to the border), DEFIANCE (S. of a line drawn from where Rte. #66 meets the northern line through Independence to the eastern county border), ERIE (Western 1/3), FULTON, HANCOCK, HARDIN (North of a line drawn from Maysville to a point 4 miles south of the northern line on the eastern line), HENRY, HURON (West of a line drawn from the northern border through Monroeville & Willard), LUCAS, OTTAWA, PUTNAM (East of a line drawn from the northern border down through Miller City to where #696 meets the southern border), SANDUSKY, SENECA, WILLIAMS (East of a line drawn from Pioneer through Stryker to the southern border), WOOD & WYANDOT (North of Rte. #30)

	Rates	Fringes
IRONWORKER		
Fence Erector.....	\$ 25.40	23.87
Flat Road Mesh.....	\$ 29.77	21.30
Tunnels & Caissons Under Pressure.....	\$ 29.77	21.30
All Other Work.....	\$ 34.25	28.20

-----  
 IRON0147-002 06/01/2023

ALLEN (Northern half), DEFIANCE (Northern part, excluding south of a line drawn from where Rte. #66 meets the northern line through Independence to the eastern county border), MERCER (Northern half), PAULDING, PUTNAM (Western part, excluding east of a line drawn from the northern border down through Miller City to where #696 meets the southern border), VAN WERT, and WILLIAMS (Western part, excluding east of a line drawn from Pioneer through Stryker to the southern border) COUNTIES

	Rates	Fringes
IRONWORKER.....	\$ 33.00	25.59

-----  
 IRON0172-002 06/01/2023

CHAMPAIGN (Eastern one-third), CLARK (Eastern one-fourth), COSHOCTON (West of a line beginning at the northwestern county line going through Walhonding & Tunnel Hill to the southern county line), CRAWFORD (South of Rte. #30), DELAWARE,

FAIRFIELD, FAYETTE, FRANKLIN, HARDIN (Excluding a line drawn from Roundhead to Maysville), HIGHLAND (Eastern one-fifth), HOCKING, JACKSON (Northern half), KNOX, LICKING, LOGAN (Eastern one-third), MADISON, MARION, MORROW, MUSKINGUM (West of a line starting at Adams Mill going to Adamsville & going from Adamsville through Blue Rock to the southern border), PERRY, PICKAWAY, PIKE (Northern half), ROSS, UNION, VINTON and WYANDOT (South of Rte. #30) COUNTIES

	Rates	Fringes
IRONWORKER.....	\$ 34.07	22.55
-----		
IRON0207-004 06/01/2023		

ASHTABULA (Southern part starting at the Geauga County line), COLUMBIANA (E. of a line from Damascus to Highlandtown), MAHONING (N. of Old Route #224), PORTAGE (E. of a line from Middlefield to Shalersville to Deerfield) & TRUMBULL

	Rates	Fringes
IRONWORKER		
Layout; Sheeter.....	\$ 34.00	27.16
Ornamental; Reinforcing;		
Structural.....	\$ 33.00	27.16
Ornamental; Reinforcing.....	\$ 28.92	25.61
-----		
IRON0290-002 06/01/2023		

ALLEN (Southern half), AUGLAIZE, BUTLER (North of a line drawn from east to the west county line going through Oxford, Darrrtown & Woodsdale), CHAMPAIGN (Excluding east of a line drawn from Catawla to the point where #68 intersects the northern county line), CLARK (Western two-thirds), CLINTON (Excluding south of a line drawn from Blanchester to Lynchburg), DARKE, GREENE, HIGHLAND (Inside lines drawn from Marshall to Lynchburg & from the northern county line through East Monroe to Marshall), LOGAN (West of a line drawn from West Liberty to where the northern county line meets the western county line of Hardin), MERCER (Southern half), MIAMI, MONTGOMERY, PREBLE, SHELBY & WARREN (Excluding south of a line drawn from Blanchester through Morrow to the western county line) COUNTIES

Rates	Fringes
-------	---------

IRONWORKER.....\$ 32.69 24.05

-----  
IRON0549-003 12/01/2022

BELMONT, GUERNSEY, HARRISON, JEFFERSON, MONROE & MUSKINGUM  
(Excluding portion west of a line starting at Adams Mill going  
to Adamsville and going from Adamsville through Blue Rock to  
the south border)

Rates Fringes

IRONWORKER.....\$ 35.19 25.66

-----  
IRON0550-004 05/01/2023

ASHLAND, CARROLL, COLUMBIANA (W. of a line from Damascus to  
Highlandtown), COSHOCTON (E. of a line beginning at NW Co. line  
going through Walhonding & Tunnel Hill to the South Co. line),  
HOLMES, HURON (S. of Old Rte. #224), MAHONING (S. of Old Rte.  
#224), MEDINA (S. of Old Rte. #224), PORTAGE (S. of Old Rte.  
#224), RICHLAND, STARK, SUMMIT (S. of Old Rte. #224, Excluding  
city limits of Barberton), TUSCARAWAS, & WAYNE

Rates Fringes

Ironworkers:Structural,  
Ornamental and Reinforcing.....\$ 33.00 22.27

-----  
IRON0769-004 06/01/2023

ADAMS (Eastern Half), GALLIA, JACKSON (Southern Half), LAWRENCE  
& SCIOTO

Rates Fringes

IRONWORKER.....\$ 36.16 28.34

-----  
IRON0787-003 12/01/2023

ATHENS, MEIGS, MORGAN, NOBLE, and WASHINGTON COUNTIES

Rates Fringes

IRONWORKER.....\$ 33.30 23.95

-----  
LABO0265-008 05/01/2023

	Rates	Fringes
LABORER		
ASHTABULA, ERIE, HURON, LORAIN, LUCAS, MAHONING, MEDINA, OTTAWA, PORTAGE, SANDUSKY, STARK, SUMMIT, TRUMBULL & WOOD COUNTIES		
GROUP 1.....	\$ 35.05	13.70
GROUP 2.....	\$ 35.22	13.70
GROUP 3.....	\$ 35.55	13.70
GROUP 4.....	\$ 36.00	13.70
CUYAHOGA AND GEAUGA COUNTIES ONLY: SEWAGE PLANTS, WASTE PLANTS, WATER TREATMENT FACILITIES, PUMPING STATIONS, & ETHANOL PLANTS CONSTRUCTION.....		
	\$ 37.66	13.70
CUYAHOGA, GEAUGA & LAKE COUNTIES		
GROUP 1.....	\$ 36.28	13.70
GROUP 2.....	\$ 36.45	13.70
GROUP 3.....	\$ 36.78	13.70
GROUP 4.....	\$ 37.23	13.70
REMAINING COUNTIES OF OHIO		
GROUP 1.....	\$ 34.62	13.70
GROUP 2.....	\$ 34.79	13.70
GROUP 3.....	\$ 35.12	13.70
GROUP 4.....	\$ 35.57	13.70

LABORER CLASSIFICATIONS

GROUP 1 - Asphalt Laborer; Carpenter Tender; Concrete Curing Applicator; Dump Man (Batch Truck); Guardrail and Fence Installer; Joint Setter; Laborer (Construction); Landscape Laborer; Mesh Handlers & Placer; Right-of-way Laborer; Riprap Laborer & Grouter; Scaffold Erector; Seal Coating; Surface Treatment or Road Mix Laborer; Sign Installer; Slurry Seal; Utility Man; Bridge Man; Handyman; Waterproofing Laborer; Flagperson; Hazardous Waste (level D); Diver Tender; Zone Person & Traffic Control

GROUP 2 - Asphalt Raker; Concrete Puddler; Kettle Man Pipeline); Machine Driven Tools (Gas, Electric, Air); Mason Tender; Brick Paver; Mortar Mixer; Power Buggy or Power Wheelbarrow; Paint Striper; Sheeting & Shoring Man; Surface Grinder Man; Plastic Fusing Machine Operator; Pug Mill Operator; & Vacuum Devices (wet or dry); Rodding Machine Operator; Diver; Screwman or Paver; Screed Person; Water



Blast, Hand Held Wand; Pumps 4" & Under (Gas, Air or Electric) & Hazardous Waste (level C); Air Track and Wagon Drill; Bottom Person; Cofferdam (below 25 ft. deep); Concrete Saw Person; Cutting with Burning Torch; Form Setter; Hand Spiker (Railroad); Pipelayer; Tunnel Laborer (without air) & Caisson; Underground Person (working in Sewer and Waterline, Cleaning, Repairing & Reconditioning); Sandblaster Nozzle Person; & Hazardous Waste (level B)

GROUP 3 - Blaster; Mucker; Powder Person; Top Lander; Wrencher (Mechanical Joints & Utility Pipeline); Yarnier; Hazardous Waste (level A); Concrete Specialist; Concrete Crew in Tunnels (With Air-pressurized - \$1.00 premium); Curb Setter & Cutter; Grade Checker; Utility Pipeline Tapper; Waterline; and Caulker

GROUP 4 - Miner (With Air-pressurized - \$1.00 premium); & Gunitite Nozzle Person

TUNNEL LABORER WITH AIR-PRESSURIZED ADD \$1.00 TO BASE RATE

SIGNAL PERSON WILL RECEIVE THE RATE EQUAL TO THE RATE PAID THE LABORER CLASSIFICATION FOR WHICH HE OR SHE IS SIGNALING.

-----  
 PAIN0006-002 05/01/2023

ASHTABULA, CUYAHOGA, GEAUGA, LAKE, LORAIN, PORTAGE (N. of the East-West Turnpike) & SUMMIT (N. of the East-West Turnpike)

	Rates	Fringes
PAINTER		
COMMERCIAL NEW WORK; REMODELING; & RENOVATIONS		
GROUP 1.....	\$ 30.75	18.95
GROUP 2.....	\$ 31.15	18.95
GROUP 3.....	\$ 31.45	18.95
GROUP 4.....	\$ 37.01	18.95
COMMERCIAL REPAINT		
GROUP 1.....	\$ 29.25	18.95
GROUP 2.....	\$ 29.65	18.95
GROUP 3.....	\$ 29.95	18.95

PAINTER CLASSIFICATIONS - COMMERCIAL NEW WORK; REMODELING; & RENOVATIONS

GROUP 1 - Brush; & Roller

GROUP 2 - Sandblasting & Buffing

GROUP 3 - Spray Painting; Closed Steel Above 55 feet; Bridges & Open Structural Steel; Tanks - Water Towers; Bridge Painters; Bridge Riggers; Containment Builders

GROUP 4 - Bridge Blaster

PAINTER CLASSIFICATIONS - COMMERCIAL REPAINT

GROUP 1 - Brush; & Roller

GROUP 2 - Sandblasting & Buffing

GROUP 3 - Spray Painting

-----  
PAIN007-002 07/01/2023

FULTON, HENRY, LUCAS, OTTAWA (Excluding Allen, Bay, Bono, Catawba Island, Clay Center, Curtice, Danbury, Eagle Beach, Elliston, Elmore, Erie, Fishback, Gem Beach & Genova) & WOOD

Rates Fringes

PAINTER

NEW COMMERCIAL WORK

GROUP 1.....	\$ 28.59	20.04
GROUP 2.....	\$ 29.59	20.04
GROUP 3.....	\$ 29.59	20.04
GROUP 4.....	\$ 29.59	20.04
GROUP 5.....	\$ 29.59	20.04
GROUP 6.....	\$ 29.59	20.04
GROUP 7.....	\$ 29.59	20.04
GROUP 8.....	\$ 29.59	20.04
GROUP 9.....	\$ 29.59	20.04

REPAINT IS 90% OF JR

PAINTER CLASSIFICATIONS

GROUP 1 - Brush; Spray & Sandblasting Pot Tender

GROUP 2 - Refineries & Refinery Tanks; Surfaces 30 ft. or over where material is applied to or labor performed on above ground level (exterior), floor level (interior)

GROUP 3 - Swing Stage & Chair

GROUP 4 - Lead Abatement

GROUP 5 - All Methods of Spray

GROUP 6 - Solvent-Based Catalized Epoxy Materials of 2 or More Component Materials, to include Solvent-Based Conversion Varnish (excluding water based)

GROUP 7 - Spray Solvent Based Material; Sand & Abrasive Blasting

GROUP 8 - Towers; Tanks; Bridges; Stacks Over 30 Feet

GROUP 9 - Epoxy Spray (excluding water based)

-----  
PAIN0012-008 05/01/2019

BUTLER COUNTY

	Rates	Fringes
PAINTER		
GROUP 1.....	\$ 21.95	10.20
GROUP 2.....	\$ 25.30	10.20
GROUP 3.....	\$ 25.80	10.20
GROUP 4.....	\$ 26.05	10.20
GROUP 5.....	\$ 26.30	10.20

PAINTER CLASSIFICATIONS

GROUP 1: Bridge Equipment Tender; Bridge/Containment Builder

GROUP 2: Brush & Roller

GROUP 3: Spray

GROUP 4: Sandblasting; & Waterblasting

GROUP 5: Elevated Tanks; Steeplejack Work; Bridge; & Lead Abatement

-----  
PAIN0012-010 05/01/2019

BROWN, CLERMONT, CLINTON, HAMILTON & WARREN

Rates                      Fringes

PAINTER

HEAVY & HIGHWAY BRIDGES-  
 GUARDRAILS-LIGHTPOLES-  
 STRIPING

Bridge Equipment Tender and Containment Builder....	\$ 21.95	10.20
Bridges when highest point of clearance is 60 feet or more; & Lead Abatement Projects.....	\$ 26.30	10.20
Brush & Roller.....	\$ 25.30	10.20
Sandblasting & Hopper Tender; Water Blasting.....	\$ 26.05	10.20
Spray.....	\$ 25.80	10.20

PAIN0093-001 12/01/2022

ATHENS, GUERNSEY, HOCKING, MONROE, MORGAN, NOBLE and  
 WASHINGTON COUNTIES

Rates Fringes

PAINTER

Bridges; Locks; Dams; Tension Towers; & Energized Substations.....	\$ 34.81	22.47
Power Generating Facilities..	\$ 31.66	22.47

PAIN0249-002 05/01/2023

CLARK, DARKE, GREENE, MIAMI, MONTGOMERY & PREBLE

Rates Fringes

PAINTER

GROUP 1 - Brush & Roller....	\$ 26.23	12.56
GROUP 2 - Swing, Scaffold Bridges; Structural Steel; Open Acid Tank; High Tension Electrical Equipment; & Hot Pipes.....	\$ 26.23	12.56
GROUP 3 - Spray; Sandblast; Steamclean; Lead Abatement.....	\$ 26.98	12.56
GROUP 4 - Steeplejack Work..	\$ 27.18	12.56
GROUP 5 - Coal Tar.....	\$ 27.73	12.56
GROUP 6 - Bridge Equipment Tender & or Containment Builder.....	\$ 34.94	12.56

GROUP 7 - Tanks, Stacks & Towers.....	\$ 29.87	12.56
GROUP 8 - Bridge Blaster, Rigger.....	\$ 37.94	12.56

-----  
PAIN0356-002 09/01/2009

KNOX, LICKING, MUSKINGUM, and PERRY

	Rates	Fringes
PAINTER		
Bridge Equipment Tenders and Containment Builders....	\$ 27.93	7.25
Bridges; Blasters; and Riggers.....	\$ 34.60	7.25
Brush and Roller.....	\$ 20.93	7.25
Sandblasting; Steam Cleaning; Waterblasting; and Hazardous Work.....	\$ 25.82	7.25
Spray.....	\$ 21.40	7.25
Structural Steel and Swing Stage.....	\$ 25.42	7.25
Tanks; Stacks; and Towers...	\$ 28.63	7.25

-----  
PAIN0438-002 12/01/2021

BELMONT, HARRISON and JEFFERSON COUNTIES

	Rates	Fringes
PAINTER		
Bridges, Locks, Dams, Tension Towers & Energized Substations.....	\$ 34.44	18.19
Power Generating Facilities..	\$ 32.29	18.19

-----  
PAIN0476-001 06/01/2023

COLUMBIANA, MAHONING, and TRUMBULL COUNTIES

	Rates	Fringes
PAINTER		
GROUP 1.....	\$ 27.49	17.06
GROUP 2.....	\$ 34.12	17.06
GROUP 3.....	\$ 27.70	17.06
GROUP 4.....	\$ 27.99	17.06
GROUP 5.....	\$ 28.14	17.06
GROUP 6.....	\$ 28.39	17.06

GROUP 7.....\$ 29.49 17.06

PAINTER CLASSIFICATIONS:

GROUP 1: Painters, Brush & Roller

GROUP 2: Bridges

GROUP 3: Structural Steel

GROUP 4: Spray, Except Bar Joist/Deck

GROUP 5: Epoxy/Mastic; Spray- Bar Joist/Deck; Working Above 50 Feet; and Swingstages

GROUP 6: Tanks; Sandblasting

GROUP 7: Towers; Stacks

-----  
PAIN0555-002 06/01/2021

ADAMS, HIGHLAND, JACKSON, PIKE & SCIOTO

	Rates	Fringes
PAINTER		
GROUP 1.....	\$ 31.95	17.05
GROUP 2.....	\$ 33.47	17.05
GROUP 3.....	\$ 34.99	17.05
GROUP 4.....	\$ 37.97	17.05

PAINTER CLASSIFICATIONS

GROUP 1 - Containment Builder

GROUP 2 - Brush; Roller; Power Tools, Under 40 feet

GROUP 3 - Sand Blasting; Spray; Steam Cleaning; Pressure Washing; Epoxy & Two Component Materials; Lead Abatement; Hazardous Waste; Toxic Materials; Bulk & Storage Tanks of 25,000 Gallon Capacity or More; Elevated Tanks

GROUP 4 - Stacks; Bridges

-----  
PAIN0639-001 05/01/2011

Rates Fringes

Sign Painter & Erector.....\$ 20.61            3.50+a+b+c

FOOTNOTES: a. 7 Paid Holidays: New Year's Day; Memorial Day; July 4th; Labor Day; Thanksgiving Day; Christmas Day & 1 Floating Day

b. Vacation Pay: After 1 year's service - 5 days' paid vacation; After 2, but less than 10 years' service - 10 days' paid vacation; After 10, but less than 20 years' service - 15 days' paid vacation; After 20 years' service - 20 days' paid vacation

c. Funeral leave up to 3 days maximum paid leave for death of mother, father, brother, sister, spouse, child, mother-in-law, father-in-law, grandparent and inlaw provided employee attends funeral

-----  
PAIN0788-002 06/01/2023

ASHLAND, CRAWFORD, ERIE, HANCOCK, HURON, MARION, MORROW, OTTAWA (Allen, Bay, Bono, Catawba Island, Clay Center, Curtice, Danbury, Eagle Beach, Elliston, Elmore, Erie, Fishback, Gem Beach & Genoa), RICHLAND, SANDUSKY, SENECA & WYANDOT

	Rates	Fringes
PAINTER		
Brush & Roller.....	\$ 25.78	17.12
Structural Steel.....	\$ 27.38	17.12

WINTER REPAINT: Between December 1 to March 31 - 90%JR

\$.50 PER HOUR SHALL BE ADDED TO THE RATE OF PAY FOR THE CLASSIFICATION OF WORK:

While working swingstage, boatswain chair, needle beam and horizontal cable. While operating sprayguns, sandblasting, cobblasting and high pressure waterblasting (4000psi).

\$1.00 PER HOUR SHALL BE ADDED TO THE RATE OF PAY FOR THE CLASSIFICATION OF WORK:

For the application of catalized epoxy, including latex epoxy that is deemed hazardous, lead abatement, or for work or material where special precautions beyond normal work duties must be taken. For working on stacks, tanks, and towers over 40 feet in height.

-----  
PAIN0813-005 12/01/2008

GALLIA, LAWRENCE, MEIGS & VINTON

	Rates	Fringes
PAINTER		
Base Rate.....	\$ 24.83	10.00
Bridges, Locks, Dams & Tension Towers.....	\$ 27.83	10.00

-----  
PAIN0841-001 06/01/2023

MEDINA, PORTAGE (South of and including Ohio Turnpike), and  
SUMMIT (South of and including Ohio Turnpike) COUNTIES

	Rates	Fringes
Painters:		
GROUP 1.....	\$ 30.18	15.50
GROUP 2.....	\$ 30.83	15.50
GROUP 3.....	\$ 30.93	15.50
GROUP 4.....	\$ 31.03	15.50
GROUP 5.....	\$ 31.43	15.50
GROUP 6.....	\$ 39.20	11.75
GROUP 7.....	\$ 31.68	15.50

PAINTER CLASSIFICATIONS:

GROUP 1 - Brush, Roller & Paperhanger

GROUP 2 - Epoxy Application

GROUP 3 - Swing Scaffold, Bosum Chair, & Window Jack

GROUP 4 - Spray Gun Operator of Any & All Coatings

GROUP 5 - Sandblast, Painting of Standpipes, etc. from  
Scaffolds, Bridge Work and/or Open Structural Steel,  
Standpipes and/or Water Towers

GROUP 6 - Public & Commerce Transportation, Steel or  
Galvanized, Bridges, Tunnels & Related Support Items  
(concrete)

GROUP 7 - Synthetic Exterior, Drywall Finisher and/or Taper,  
Drywall Finisher and Follow-up Man Using Automatic Tools

-----  
PAIN0841-002 06/01/2022



CARROLL, COSHOCTON, HOLMES, STARK, TUSCARAWAS & WAYNE

	Rates	Fringes
PAINTER		
Bridges; Towers, Poles & Stacks; Sandblasting Steel; Structural Steel & Metalizing.....	\$ 23.50	15.45
Brush & Roller.....	\$ 28.18	15.45
Spray; Tank Interior & Exterior.....	\$ 23.50	15.45

-----  
PAIN1020-002 07/01/2023

ALLEN, AUGLAIZE, CHAMPAIGN, DEFIANCE, HARDIN, LOGAN, MERCER,  
PAULDING, PUTNAM, SHELBY, VAN WERT, and WILLIAMS COUNTIES

	Rates	Fringes
PAINTER		
Brush & Roller.....	\$ 26.64	15.56
Drywall Finishing & Taping..	\$ 27.39	15.56
Lead Abatement.....	\$ 28.39	15.56
Spray, Sandblasting Pressure Cleaning, & Refinery.....	\$ 27.39	15.56
Swing Stage, Chair, Spiders, & Cherry Pickers...	\$ 26.89	15.56
Wallcoverings.....	\$ 27.39	15.56

All surfaces 40 ft. or over where material is applied to or  
labor performed on, above ground level (exterior), floor  
level (interior) - \$.50 premium

Applying Coal Tar Products - \$1.00 premium

-----  
PAIN1275-002 05/01/2023

DELAWARE, FAIRFIELD, FAYETTE, FRANKLIN, MADISON, PICKAWAY, ROSS  
& UNION

	Rates	Fringes
PAINTER		
Bridges.....	\$ 35.57	14.25

Brush; Roller.....	\$ 29.96	14.25
Sandblasting; Steamcleaning; Waterblasting (3500 PSI or Over)& Hazardous Work.....	\$ 30.66	14.25
Spray.....	\$ 30.46	14.25
Stacks; Tanks; & Towers.....	\$ 32.77	14.25
Structural Steel & Swing Stage.....	\$ 28.81	14.25

-----  
 PLAS0109-001 05/01/2023

MEDINA, PORTAGE, STARK, and SUMMIT COUNTIES

	Rates	Fringes
PLASTERER.....	\$ 33.74	19.02

-----  
 PLAS0109-003 05/01/2023

CARROLL, HOLMES, TUSCARAWAS, and WAYNE COUNTIES

	Rates	Fringes
PLASTERER.....	\$ 33.74	19.02

-----  
 PLAS0132-002 07/01/2023

BROWN, BUTLER, CLERMONT, HAMILTON, HIGHLAND, WARREN COUNTIES

	Rates	Fringes
PLASTERER.....	\$ 28.40	16.24

-----  
 PLAS0404-002 05/01/2018

ASHTABULA, CUYAHOGA, GEAUGA, AND LAKE COUNTIES

	Rates	Fringes
PLASTERER.....	\$ 29.63	17.11

-----  
 PLAS0404-003 05/01/2018

LORAIN COUNTY

	Rates	Fringes
PLASTERER.....	\$ 28.86	17.11

-----

PLAS0526-022 05/01/2018

COLUMBIANA, MAHONING, and TRUMBULL COUNTIES

	Rates	Fringes
PLASTERER.....	\$ 28.86	17.11

-----  
PLAS0526-023 05/01/2018

BELMONT, HARRISON, and JEFFERSON COUNTIES

	Rates	Fringes
PLASTERER.....	\$ 28.21	17.11

-----  
PLAS0886-001 05/01/2023

FULTON, HANCOCK, HENRY, LUCAS, PUTNAM, and WOOD COUNTIES

	Rates	Fringes
PLASTERER.....	\$ 33.74	18.95

-----  
PLAS0886-003 05/01/2023

DEFIANCE, ERIE, HURON, OTTAWA, PAULDING, SANDUSKY, and SENECA COUNTIES

	Rates	Fringes
PLASTERER.....	\$ 33.74	18.95

-----  
PLAS0886-004 05/01/2023

ALLEN, AUGLAIZE, HARDIN, LOGAN, MERCER, and VAN WERT COUNTIES

	Rates	Fringes
PLASTERER.....	\$ 33.74	18.95

-----  
PLUM0042-002 07/01/2023

ASHLAND, CRAWFORD, ERIE, HURON, KNOX, LORAIN, MORROW, RICHLAND & WYANDOT

	Rates	Fringes
--	-------	---------

Plumber, Pipefitter,  
Steamfitter.....\$ 37.62 25.47

-----  
PLUM0050-002 07/03/2023

DEFIANCE, FULTON, HANCOCK, HENRY, LUCAS, OTTAWA, PAULDING,  
PUTNAM, SANDUSKY, SENECA, WILLIAMS & WOOD

Rates Fringes

Plumber, Pipefitter,  
Steamfitter.....\$ 47.15 24.21

-----  
PLUM0055-003 05/01/2023

ASHTABULA, CUYAHOGA, GEAUGA, LAKE, MEDINA (N. of Rte. #18 &  
Smith Road) & SUMMIT (N. of Rte. #303, including the corporate  
limits of the city of Hudson)

Rates Fringes

PLUMBER.....\$ 41.11 29.88

-----  
PLUM0083-001 07/01/2017

BELMONT & MONROE (North of Rte. #78)

Rates Fringes

Plumber and Steamfitter.....\$ 32.16 31.51

-----  
PLUM0094-002 05/01/2023

CARROLL (Northen Half), STARK, and WAYNE COUNTIES

Rates Fringes

PLUMBER/PIPEFITTER.....\$ 38.03 23.09

-----  
PLUM0120-002 05/01/2023

ASHTABULA, CUYAHOGA, GEAUGA, LAKE, LORAIN (the C.E.I. Power  
House in Avon Lake), MEDINA (N. of Rte. #18) & SUMMIT (N. of  
#303)

Rates Fringes

PIPEFITTER.....\$ 45.62 27.30

-----  
PLUM0162-002 06/01/2022

CHAMPAIGN, CLARK, CLINTON, DARKE, FAYETTE, GREENE, MIAMI,  
MONTGOMERY & PREBLE

Rates Fringes

Plumber, Pipefitter,  
Steamfitter.....\$ 36.47 26.80

-----  
PLUM0168-002 06/01/2023

MEIGS, MONROE (South of Rte. #78), MORGAN (South of Rte. #78)  
& WASHINGTON

Rates Fringes

PLUMBER/PIPEFITTER.....\$ 38.95 34.97

-----  
PLUM0189-002 06/01/2022

DELAWARE, FAIRFIELD, FRANKLIN, HOCKING, LICKING, MADISON,  
MARION, PERRY, PICKAWAY, ROSS & UNION

Rates Fringes

Plumber, Pipefitter,  
Steamfitter.....\$ 43.25 26.94

-----  
PLUM0219-002 06/01/2023

MEDINA (Rte. #18 from eastern edge of Medina Co., west to  
eastern corporate limits of the city of Medina, & on the county  
road from the west corporate limits of Medina running due west  
to and through community of Risley to the western edge of  
Medina County - All territory south of this line), PORTAGE, and  
SUMMIT (S. of Rte. #303) COUNTIES

Rates Fringes

Plumber and Steamfitter.....\$ 43.22 27.29

-----  
PLUM0392-002 06/01/2023

BROWN, BUTLER, CLERMONT, HAMILTON & WARREN

	Rates	Fringes
PLUMBER/PIPEFITTER.....	\$ 38.62	25.83
-----		
PLUM0396-001 06/01/2023		

COLUMBIANA (Excluding Washington & Yellow Creek Townships & Liverpool Twp. - Secs. 35 & 36 - West of County Road #427), MAHONING and TRUMBULL COUNTIES

	Rates	Fringes
PLUMBER/PIPEFITTER.....	\$ 37.10	28.51
-----		
PLUM0495-002 06/01/2023		

CARROLL (Rose, Monroe, Union, Lee, Orange, Perry & Loudon Townships), COLUMBIANA (Washington & Yellow Creek Townships & Liverpool Township, Secs. 35 & 36, West of County Rd. #427), COSHOCTON, GUERNSEY, HARRISON, HOLMES, JEFFERSON, MORGAN (South to State Rte. #78 & from McConnelville west on State Rte. #37 to the Perry County line), MUSKINGUM, NOBLE, and TUSCARAWAS COUNTIES

	Rates	Fringes
Plumber, Pipefitter, Steamfitter.....	\$ 32.23	35.40
-----		
PLUM0577-002 06/01/2023		

ADAMS, ATHENS, GALLIA, HIGHLAND, JACKSON, LAWRENCE, PIKE, SCIOTO & VINTON

	Rates	Fringes
Plumber, Pipefitter, Steamfitter.....	\$ 39.98	26.48
-----		
PLUM0776-002 07/01/2023		

ALLEN, AUGLAIZE, HARDIN, LOGAN, MERCER, SHELBY and VAN WERT COUNTIES

	Rates	Fringes
Plumber, Pipefitter, Steamfitter.....	\$ 40.07	28.95

-----  
TEAM0377-003 05/01/2023

STATEWIDE, EXCEPT CUYAHOGA, GEAUGA & LAKE

	Rates	Fringes
TRUCK DRIVER		
GROUP 1.....	\$ 31.49	16.40
GROUP 2.....	\$ 31.91	16.40

TRUCK DRIVER CLASSIFICATIONS

GROUP 1 - Asphalt Distributor; Batch; 4- Wheel Service;  
4-Wheel Dump; Oil Distributor & Tandem

GROUP 2 - Tractor-Trailer Combination: Fuel; Pole Trailer;  
Ready Mix; Semi-Tractor; & Asphalt Oil Spraybar Man When  
Operated From Cab; 5 Axles & Over; Belly Dump; End Dump;  
Articulated Dump; Heavy Duty Equipment; Low Boy; & Truck  
Mechanic

-----  
TEAM0436-002 05/01/2023

CUYAHOGA, GEAUGA & LAKE

	Rates	Fringes
TRUCK DRIVER		
GROUP 1.....	\$ 31.00	18.95
GROUP 2.....	\$ 32.50	18.95

GROUP 1: Straight & Dump, Straight Fuel

GROUP 2: Semi Fuel, Semi Tractor, Euclids, Darts, Tank,  
Asphalt Spreaders, Low Boys, Carry-All, Tourna-Rockers,  
Hi-Lifts, Extra Long Trailers, Semi-Pole Trailers, Double  
Hook-Up Tractor Trailers including Team Track & Railroad  
Siding, Semi-Tractor & Tri-Axle Trailer, Tandem Tractor &  
Tandem Trailer, Tag Along Trailer, Expandable Trailer or  
Towing Requiring Road Permits, Ready-Mix (Agitator or  
Non-Agitator), Bulk Concrete Driver, Dry Batch Truck,  
Articulated End Dump

-----

WELDERS - Receive rate prescribed for craft performing operation to which welding is incidental.

=====

\*\* Workers in this classification may be entitled to a higher minimum wage under Executive Order 14026 (\$17.20) or 13658 (\$12.90). Please see the Note at the top of the wage determination for more information. Please also note that the minimum wage requirements of Executive Order 14026 are not currently being enforced as to any contract or subcontract to which the states of Texas, Louisiana, or Mississippi, including their agencies, are a party.

Note: Executive Order (EO) 13706, Establishing Paid Sick Leave for Federal Contractors applies to all contracts subject to the Davis-Bacon Act for which the contract is awarded (and any solicitation was issued) on or after January 1, 2017. If this contract is covered by the EO, the contractor must provide employees with 1 hour of paid sick leave for every 30 hours they work, up to 56 hours of paid sick leave each year. Employees must be permitted to use paid sick leave for their own illness, injury or other health-related needs, including preventive care; to assist a family member (or person who is like family to the employee) who is ill, injured, or has other health-related needs, including preventive care; or for reasons resulting from, or to assist a family member (or person who is like family to the employee) who is a victim of, domestic violence, sexual assault, or stalking. Additional information on contractor requirements and worker protections under the EO is available at <https://www.dol.gov/agencies/whd/government-contracts>.

Unlisted classifications needed for work not included within the scope of the classifications listed may be added after award only as provided in the labor standards contract clauses (29CFR 5.5 (a) (1) (iii)).

-----

The body of each wage determination lists the classification and wage rates that have been found to be prevailing for the cited type(s) of construction in the area covered by the wage determination. The classifications are listed in alphabetical order of ""identifiers"" that indicate whether the particular rate is a union rate (current union negotiated rate for local), a survey rate (weighted average rate) or a union average rate



(weighted union average rate).

#### Union Rate Identifiers

A four letter classification abbreviation identifier enclosed in dotted lines beginning with characters other than ""SU"" or ""UAVG"" denotes that the union classification and rate were prevailing for that classification in the survey. Example: PLUM0198-005 07/01/2014. PLUM is an abbreviation identifier of the union which prevailed in the survey for this classification, which in this example would be Plumbers. 0198 indicates the local union number or district council number where applicable, i.e., Plumbers Local 0198. The next number, 005 in the example, is an internal number used in processing the wage determination. 07/01/2014 is the effective date of the most current negotiated rate, which in this example is July 1, 2014.

Union prevailing wage rates are updated to reflect all rate changes in the collective bargaining agreement (CBA) governing this classification and rate.

#### Survey Rate Identifiers

Classifications listed under the ""SU"" identifier indicate that no one rate prevailed for this classification in the survey and the published rate is derived by computing a weighted average rate based on all the rates reported in the survey for that classification. As this weighted average rate includes all rates reported in the survey, it may include both union and non-union rates. Example: SULA2012-007 5/13/2014. SU indicates the rates are survey rates based on a weighted average calculation of rates and are not majority rates. LA indicates the State of Louisiana. 2012 is the year of survey on which these classifications and rates are based. The next number, 007 in the example, is an internal number used in producing the wage determination. 5/13/2014 indicates the survey completion date for the classifications and rates under that identifier.

Survey wage rates are not updated and remain in effect until a new survey is conducted.

#### Union Average Rate Identifiers

Classification(s) listed under the UAVG identifier indicate that no single majority rate prevailed for those classifications; however, 100% of the data reported for the classifications was union data. EXAMPLE: UAVG-OH-0010 08/29/2014. UAVG indicates that the rate is a weighted union average rate. OH indicates the state. The next number, 0010 in

the example, is an internal number used in producing the wage determination. 08/29/2014 indicates the survey completion date for the classifications and rates under that identifier.

A UAVG rate will be updated once a year, usually in January of each year, to reflect a weighted average of the current negotiated/CBA rate of the union locals from which the rate is based.

---

#### WAGE DETERMINATION APPEALS PROCESS

1.) Has there been an initial decision in the matter? This can be:

- \* an existing published wage determination
- \* a survey underlying a wage determination
- \* a Wage and Hour Division letter setting forth a position on a wage determination matter
- \* a conformance (additional classification and rate) ruling

On survey related matters, initial contact, including requests for summaries of surveys, should be with the Wage and Hour National Office because National Office has responsibility for the Davis-Bacon survey program. If the response from this initial contact is not satisfactory, then the process described in 2.) and 3.) should be followed.

With regard to any other matter not yet ripe for the formal process described here, initial contact should be with the Branch of Construction Wage Determinations. Write to:

Branch of Construction Wage Determinations  
Wage and Hour Division  
U.S. Department of Labor  
200 Constitution Avenue, N.W.  
Washington, DC 20210

2.) If the answer to the question in 1.) is yes, then an interested party (those affected by the action) can request review and reconsideration from the Wage and Hour Administrator (See 29 CFR Part 1.8 and 29 CFR Part 7). Write to:

Wage and Hour Administrator  
U.S. Department of Labor  
200 Constitution Avenue, N.W.  
Washington, DC 20210

The request should be accompanied by a full statement of the interested party's position and by any information (wage payment data, project description, area practice material, etc.) that the requestor considers relevant to the issue.

3.) If the decision of the Administrator is not favorable, an interested party may appeal directly to the Administrative Review Board (formerly the Wage Appeals Board). Write to:

Administrative Review Board  
U.S. Department of Labor  
200 Constitution Avenue, N.W.  
Washington, DC 20210

4.) All decisions by the Administrative Review Board are final.

=====

END OF GENERAL DECISION