

Addenda

Dec 18, 2023 1 Addendum No. 1

Addendum No. 1 updates the bid due date. The Bid Due Date has been changed to 2:00 p.m. on Wednesday, January 17, 2024.

Acknowledge

Jan 08, 2024 2 Addendum No. 2

Addendum No. 2 updates the bid due date. The Bid Due Date has been changed to 2:00 p.m. on Wednesday, February 21, 2024.

Acknowledge

Feb 21, 2024 3 Addendum No. 3

Addendum No. 3 replaces Attachment 8, Plans, in its entirety. Addendum No. 3 also updates the deadline for questions to February 28, 2024, and the bid due date to March 13, 2024.

[2023089 Addendum No. 3.pdf](#)



Regional Transit

**Sacramento Regional
Transit District**
A Public Transit Agency
and Equal Opportunity Employer

Administrative Offices
1400 29th Street
Sacramento, CA 95816
916-321-2800

Mailing Address
P.O. Box 2110
Sacramento, CA 95812-2110

Human Resources
2810 O Street
Sacramento, CA 95816
916-556-0298

**Customer Service &
Sales Center**
1225 R Street
Sacramento, CA 95811

**Route, Schedule & Fare
Information**
916-321-BUSS (2877)
TDD 916-483-HEAR (4527)
www.sacrt.com

Public Transit Since 1973

February 21, 2024

PROSPECTIVE BIDDER

Subject: IFB No. 2023089, Shore Power Reels Relocation
Addendum No. 3
File/Control Number: 2023089

ADDENDUM NO. 3

Enclosed is Addendum No. 3 to the Invitation for Bid (IFB) for Shore Power Reels Relocation issued by Sacramento Regional Transit District (SacRT) on November 6, 2023.

Addendum No. 3 replaces Attachment 8, Plans, in its entirety. Addendum No. 3 also updates the deadline for questions to February 28, 2024, and the bid due date to March 13, 2024.

Each page in the addendum package has been issued to allow for full replacement of existing pages in the IFB document. Changes to the text in the IFB are indicated by a vertical line in the margin next to the changes and are accompanied by an A3, indicating the addendum reference. The updated Plan sheets include an Addendum No. 3 notation.

The Bid Due Date has been changed to **2:00 p.m. on Wednesday, March 13, 2024.**

Sincerely,

Camille Tyler
Camille Tyler
Procurement Analyst II

Enclosures: Addendum No. 3, pages 2, 5, and Attachment 8 Plans

**PUBLIC NOTICE
NOTICE OF INVITATION FOR BID**

Sacramento Regional Transit District (SacRT) announces that it will seek bids for the work entitled:

SHORE POWER CABLE REELS RELOCATION

Bids must be submitted through SacRT's PlanetBids Vendor Portal **no later than 2:00 p.m. on WEDNESDAY, MARCH 13, 2024**, at which time bids will be publicly available to view on the PlanetBids site.

A3

General work description: Contractor must provide shore power connection to new Siemens light rail vehicles (LRV) by: (a) removing the existing shore power reels/cords and re-mounting them to overhead mezzanine level in each building (Metro Heavy Repair Facility(MHRF) & Metro Light Rail Facility); (b) adding an emergency shutoff switch at the mezzanine level at each relocated reel; (c) replacing reel cord "stingers"; and (d) making the system functional as shown in the Contract Plans and specified in the Scope of Work.

The work that is the subject of this bid is a public work within the meaning of Chapter 1 (beginning with Section 1720) of Part 7 of Division 2 of the California Labor Code to which Section 1771 (Payment of Prevailing Wages) applies.

Contractor license classification at the time of award must be **Class A, Class B, or Class C-10**.

It is SacRT's policy that Small Business Enterprises ("SBEs") (defined as a business that has been certified as a small business by the California Department of General Services or any other public agency that certifies small businesses under applicable laws) will have an equal opportunity to participate in the performance of this Contract. To further that policy, SacRT will provide a 5% price preference to Bidders meeting the SBE participation goal set for this Contract. See **Attachment 7 Small Business Enterprise (SBE) Requirements** for additional information and required forms.

A Bidder claiming the preference must complete and submit **SBE/LBE Form 1a SBE/LBE Participation Certification** (contained in **Attachment 7**).

SacRT hereby notifies all Bidders it will affirmatively ensure that, in regard to any contract entered into pursuant to this solicitation, all contractors will be afforded full opportunity to submit a bid in response to this invitation and will not be discriminated against based on race, color, creed, sex, disability, age, or national origin in consideration for an award.

SacRT does not prequalify subcontractor firms. However, Prime Contractors are encouraged to review the Prospective Bidders list on PlanetBids to find interested firms for subcontracting opportunities.

A pre-bid meeting is scheduled for **TUESDAY, DECEMBER 5, 2023**, at **3:00 p.m.**, Join

3.11	Removal of Deficient Or Unauthorized Work.....	44
3.12	Hazardous Materials/Differing Site Conditions	45
3.13	Disposal of Materials	45
3.14	Qualification of Bidders.....	45
3.15	Qualification Of Subcontractors.....	48
3.16	Small Business Enterprise (SBE) Requirements.....	49

ATTACHMENTS

Attachment 1	Insurance Requirements
Attachment 2	SacRT Sample Contract
Attachment 3d	SacRT General Contract Provisions – Furnish and Install
Attachment 4	State Grant Contract Provisions
Attachment 5	State Wage Determinations
Attachment 6	Visitor Access Policy
Attachment 7	Small and Local Business Enterprise (SBE/LBE) Requirements
Attachment 8	Plans
Attachment 9	SacRT Protest Procedure
Attachment 10	List of Scorable Questions and Scoring Instructions
Attachment 11	Unconditional Waiver and Release on Progress Payment
Attachment 12	Unconditional Waiver and Release on Final Payment
Attachment 13	Warranty Bond

A3

BID FORMS

Form 1	Bid Pricing Form
Form 2	Designation of Subcontractors
Form 3	Noncollusion Declaration
Form 4	Interests and Gratuities Certification
Form 5	Certification Regarding Organizational Conflicts
Form 6	Certification Regarding SacRT's Form of Agreement
Form 7	State Labor Eligibility Form
Form 8	Bid Bond
Form 9	Verification of Contractor and Subcontractors' DIR Registration
Form 10	Pre-Qualification Questionnaire
Form 11	Certification Regarding Pre-Qualification

CONTRACT FORMS

Contract Form 1	Payment Bond
Contract Form 2	Performance Bond
Contract Form 3	Prompt Payment Certification
Contract Form 4	Release on Final Payment

Any non-sequential Attachments or Forms that are not listed above are intentionally omitted.

PROJECT TEAM

OWNERS REPRESENTATIVE:

SACRAMENTO REGIONAL TRANSIT DISTRICT
2911 O STREET
SACRAMENTO, CA 95816

MARK THOMAS
701 UNIVERSITY AVE
SUITE 200
SACRAMENTO, CA 95825

DESIGN ENGINEER:

WSP USA
1100 11TH STREET, #200
SACRAMENTO, CA 95814



SHEET INDEX

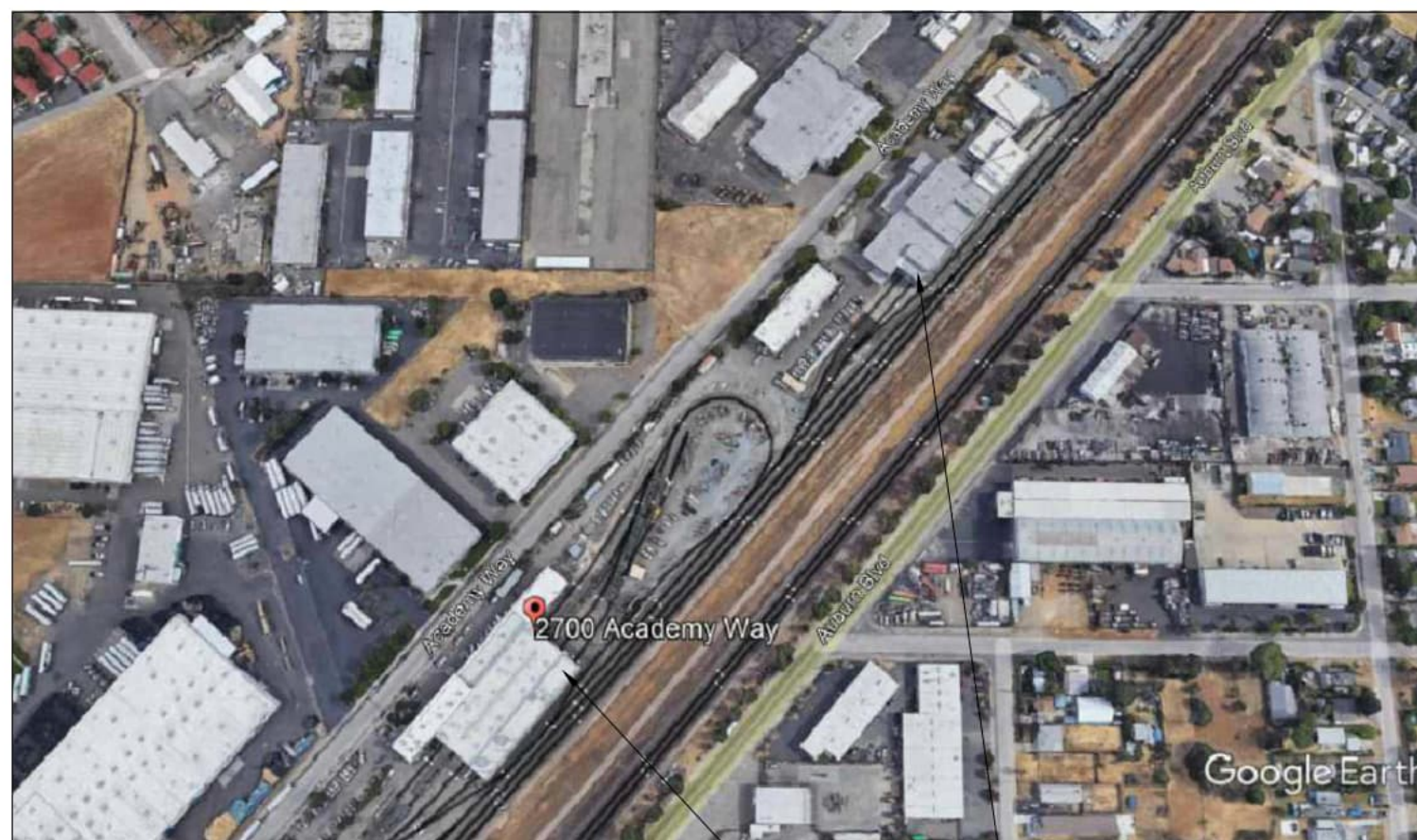
- G-001 REV 01 - INDEX SHEET AND GENERAL NOTES
- E-001 REV 01 - CONDUIT ROUTE METRO HEAVY REPAIR FACILITY
- E-002 REV 01 - CONDUIT ROUTE METRO LRT REPAIR FACILITY
- E-003 REV 01 - CABLE REEL MOUNTING METRO HEAVY AND LRT REPAIR FACILITY
- E-004 REV 00 - PICTURES OF EXISTING CABLE REEL LOCATIONS
- E-005 REV 00 - PICTURES OF PANEL INTERNALS



GENERAL NOTES:

1. DO NOT INTERFERE WITH THE USE ADJACENT BUILDINGS OR BAYS. MAINTAIN FREE AND SAFE PASSAGE AROUND MAINTENANCE BAYS.
2. ALL WORK SHALL BE PERFORMED IN A NEAT WORKMAN LIKE MANNER IN ACCORDANCE WITH CURRENT ACCEPTABLE INDUSTRY STANDARDS AND ALL APPLICABLE CODES, ORDINANCES AND REGULATIONS.
3. COORDINATES WITH ANY OTHER APPLICABLE TRADES AS REQUIRED.

SACRAMENTO REGIONAL TRANSIT DISTRICT SHORE POWER CABLE REEL RELOCATION



METRO HEAVY REPAIR FACILITY
(MHRF, 2760 ACADEMY WAY)

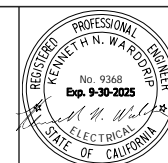
METRO LIGHT RAIL FACILITY
(METRO, 2700 ACADEMY WAY)

REVISIONS				
MARK	DATE	DESCRIPTION	BY	CHKD
△				
△	01/09/2024	ADDENDUM #3 PER SITE VISIT	RP	KW
△	11/1/2022	ISSUED FOR APPROVAL	RP	KW

SCALE: VERTICAL: N/A
HORIZONTAL: NOT TO SCALE

ORIGINAL SCALE IN INCHES
FOR REDUCED PLAN

PROJECT ENGINEER: WSP USA DATE: _____
DESIGNED BY: ROBERT PEKAREK 01/24
DRAWN BY: ROBERT PEKAREK 01/24
CHECKED BY: KEN WARDDRIP 01/24

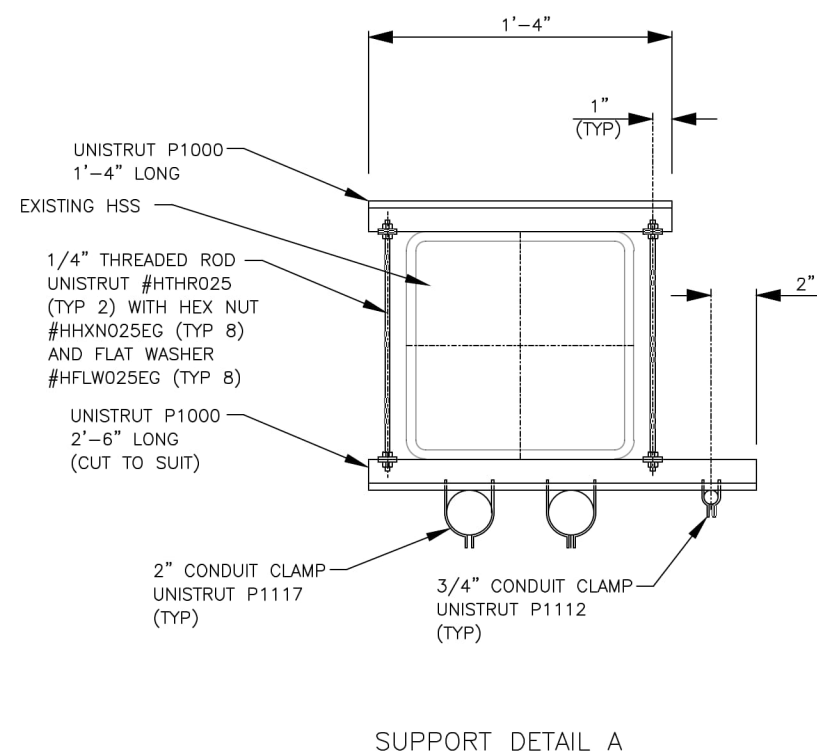
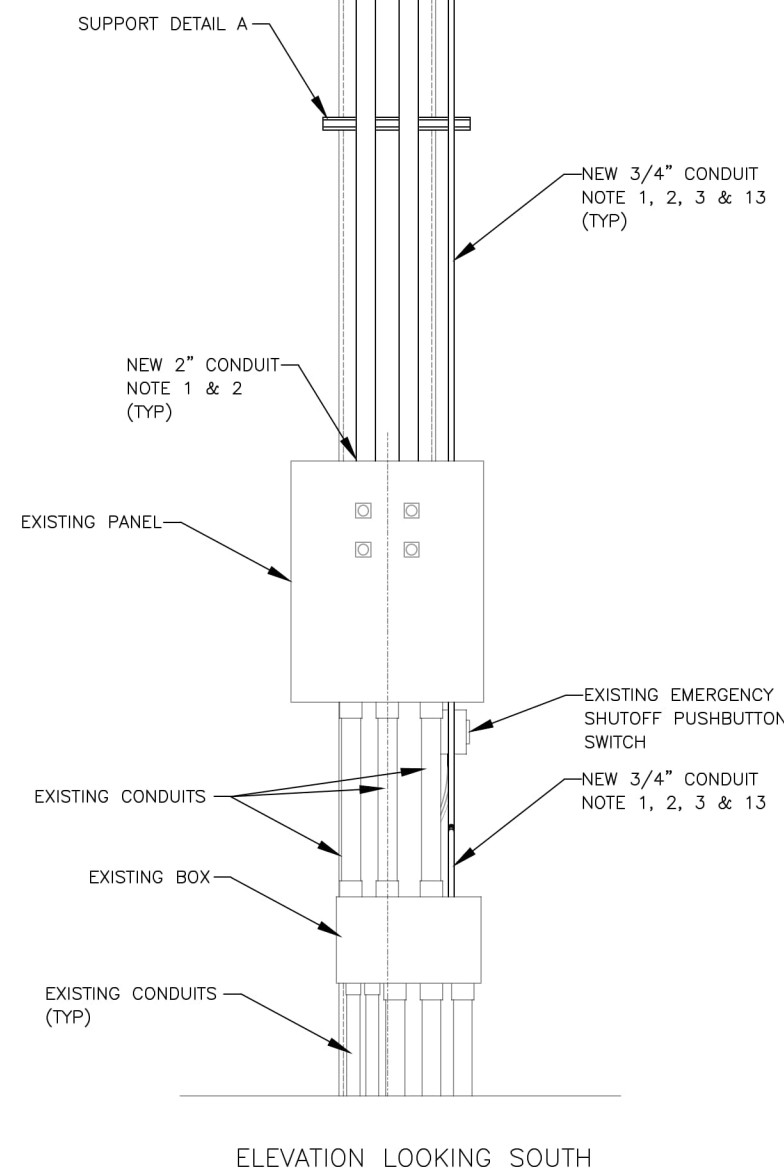
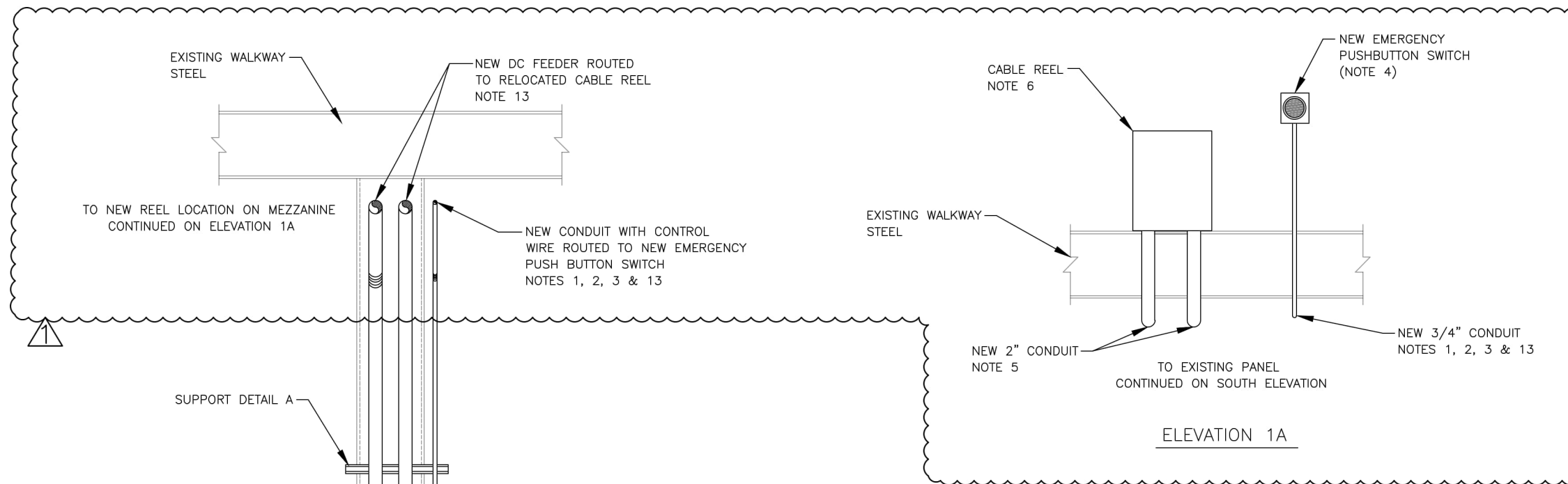


CI: XXXXXXX
FILE: _____
SUBMITTAL: _____
07/01/2022



SHEET INDEX
SHORE POWER CABLE REEL RELOCATION

G-001
SHEET
1
OF
6



CONSTRUCTION NOTES:

1. CONDUIT IS SHOWN DIAGRAMMATICALLY, CONTRACTOR MAY DEVIATE AS REQUIRED AS LONG AS MINIMUM SUPPORT DISTANCES ARE MAINTAINED.
 2. DEPENDING ON FIELD CONDITIONS THE CONDUITS MAY BE ROUTED INTO SIDE OF PANEL.
 3. NEW EMERGENCY PUSHBUTTON SWITCH SHALL BE WIRED IN SERIES WITH EXISTING EMERGENCY PUSH BUTTON SWITCH.
 4. NEW EMERGENCY PUSHBUTTON SWITCH SHALL BE EQUIVALENT TO EXISTING SWITCH WITH HOUSING BOX.
 5. FLEXIBLE CONDUIT MAY BE USED.
 6. CABLE REEL TO BE RELOCATED TO UPPER PLATFORM AS CLOSE TO THE CENTER (LONGITUDINAL) AS POSSIBLE. REPAIR CONCRETE AFTER REMOVAL AS REQUIRED.
 7. ALL PARTS ARE TO BE PURCHASED AS EQUAL TO LISTED PART NUMBERS UNLESS NOTED.
 8. FOR HORIZONTAL SUPPORTS FROM OVERHEAD PLATFORM STEEL. THE CONTRACTOR HAS THE OPTION OF USING UNISTRUT BEAM CLAMP #P1648AS WITH APPROPRIATELY SIZED THREADED ROD, HEX NUTS AND "J" CLAMP UNISTRUT #J1207 (3/4") AND #J1220 (2") OR, UNISTRUT BEAM CLAMP P2785 WITH P1000 & PIPE CLAMPS P1112 (3/4") AND P1117 (2").
 9. GROUND ALL APPLICABLE EQUIPMENT IN ACCORDANCE WITH SACRT PROCEDURES AND CODES AND STANDARDS.
 10. CONTRACTOR TO FOLLOW ALL SAFETY STANDARDS.
 11. CONTRACTOR TO ENSURE ALL WORK IS PERFORMED BY QUALIFIED INDIVIDUALS.
 12. CONTRACTOR TO ENSURE ALL WORK IS PERFORMED IN ACCORDANCE WITH ALL CODES AND STANDARDS.
 13. CONTRACTOR TO ENSURE ALL WORK IS PERFORMED BY QUALIFIED INDIVIDUALS.
- HIGH VOLTAGE CONTROL POWER CABLE - 1/0 AWG
EMERGENCY PUSHBUTTON SWITCH CABLE - 2C #14 AWG

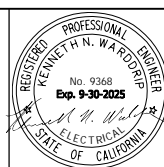
REVISIONS				
MARK	DATE	DESCRIPTION	BY	CHKD
△				
△	01/09/2024	ADDENDUM #3 PER SITE VISIT	RP	KW
△	03/17/2023	ISSUED FOR APPROVAL	RP	KW

SCALE: VERTICAL: N/A
HORIZONTAL: NOT TO SCALE

ORIGINAL SCALE IN INCHES FOR REDUCED PLAN

PROJECT ENGINEER: WSP USA
DESIGNED BY: ROBERT PEKAREK
DRAWN BY: ROBERT PEKAREK
CHECKED BY: KEN WARDDRIP

DATE: 01/24
DATE: 01/24
DATE: 01/24

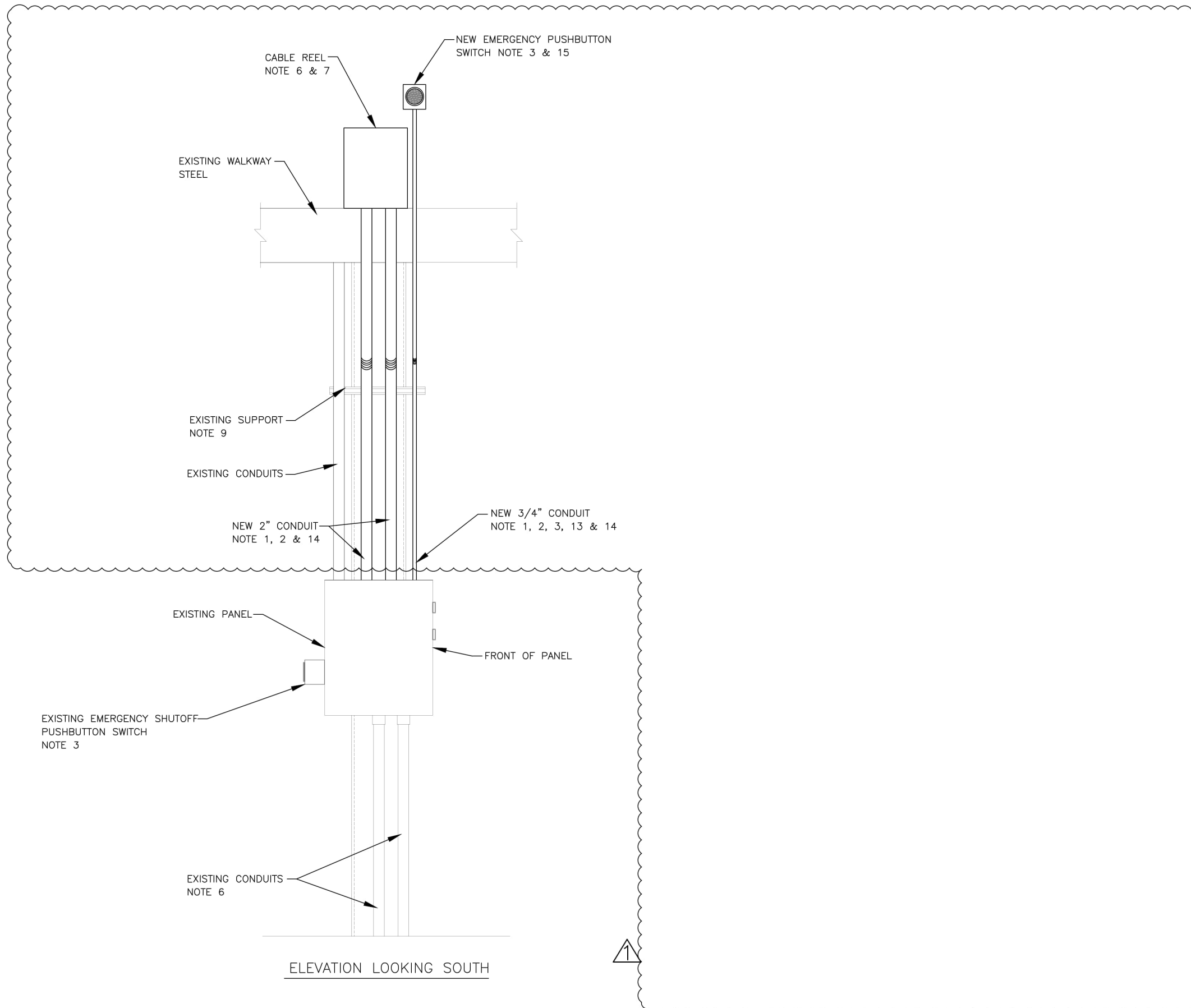


CI: XXXXXX
FILE:
SUBMITTAL:
07/01/2022



CONDUIT ROUTE METRO HEAVY RAIL FACILITY
SHORE POWER CABLE REEL RELOCATION

E-001
SHEET 2 OF 6



CONSTRUCTION NOTES:

1. CONDUIT IS SHOWN DIAGRAMMATICALLY, CONTRACTOR MAY DEVIATE AS REQUIRED AS LONG AS MINIMUM SUPPORT DISTANCES ARE MAINTAINED.
2. DEPENDING ON FIELD CONDITIONS THE CONDUITS MAY BE ROUTED INTO SIDE OF PANEL.
3. NEW EMERGENCY PUSHBUTTON SWITCH SHALL BE WIRED IN SERIES WITH EXISTING EMERGENCY PUSH BUTTON SWITCH.
4. NEW EMERGENCY PUSHBUTTON SWITCH SHALL BE EQUIVALENT TO EXISTING SWITCH WITH HOUSING BOX.
5. FLEXIBLE CONDUIT MAY BE USED.
6. DE-TERM EXISTING CABLE REEL & EITHER SPARE CABLES IN PLACE OR REMOVE DEPENDING ON FIELD CONDITIONS.
7. CABLE REEL TO BE RELOCATED TO UPPER PLATFORM. REPAIR CONCRETE AFTER REMOVAL AS REQUIRED.
8. ALL PARTS ARE TO BE PURCHASED AS EQUAL TO LISTED PART NUMBERS UNLESS NOTED.
9. MOUNT (2) NEW 2" AND (1) CONDUITS TO EXISTING UNISTRUT SUPPORT USING P1112 (3/4") AND P1117 (2"). REPLACE EXISTING P1000 IF NOT ENOUGH SPACE TO MOUNT NEW CONDUITS.
10. GROUND ALL APPLICABLE EQUIPMENT IN ACCORDANCE WITH SACRT PROCEDURES AND CODES AND STANDARDS.
11. CONTRACTOR TO FOLLOW ALL SAFETY STANDARDS.
12. CONTRACTOR TO ENSURE ALL WORK IS PERFORMED BY QUALIFIED INDIVIDUALS.
13. CONTRACTOR TO ENSURE ALL WORK IS PERFORMED IN ACCORDANCE WITH ALL CODES AND STANDARDS.
14. CABLE/WIRE SIZE WILL BE:
HIGH VOLTAGE CONTROL POWER CABLE - 1/0 AWG
EMERGENCY PUSHBUTTON SWITCH CABLE - 2C #14 AWG
15. ALTERNATIVELY, THE CONTRACTOR MAY MOUNT EMERGENCY PUSHBUTTON SWITCH TO VERTICAL STEEL MEMBER USING APPROPRIATELY SIZED SELF TAPPING HARDWARE.

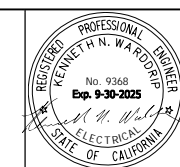
REVISIONS				
MARK	DATE	DESCRIPTION	BY	CHKD
△				
△	01/09/2024	ADDENDUM #3 PER SITE VISIT	RP	KW
△	3/17/2023	ISSUED FOR APPROVAL	RP	KW

SCALE: VERTICAL: N/A
HORIZONTAL: NOT TO SCALE

ORIGINAL SCALE IN INCHES FOR REDUCED PLAN

PROJECT ENGINEER: WSP USA
DESIGNED BY: ROBERT PEKAREK
DRAWN BY: ROBERT PEKAREK
CHECKED BY: KEN WARDDRIP

DATE: 01/24
DATE: 01/24
DATE: 01/24

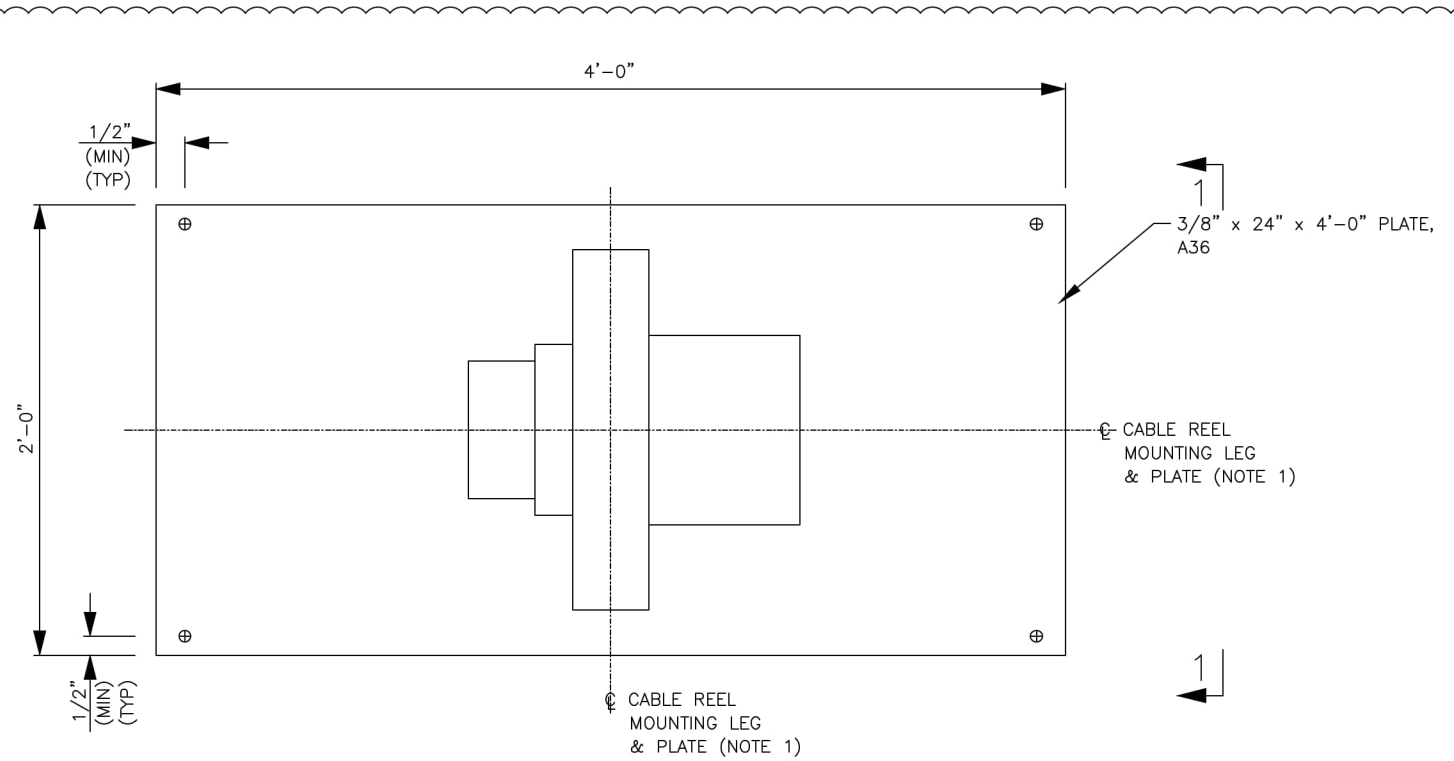


CI: XXXXXXX
FILE:
SUBMITTAL:
07/01/2022

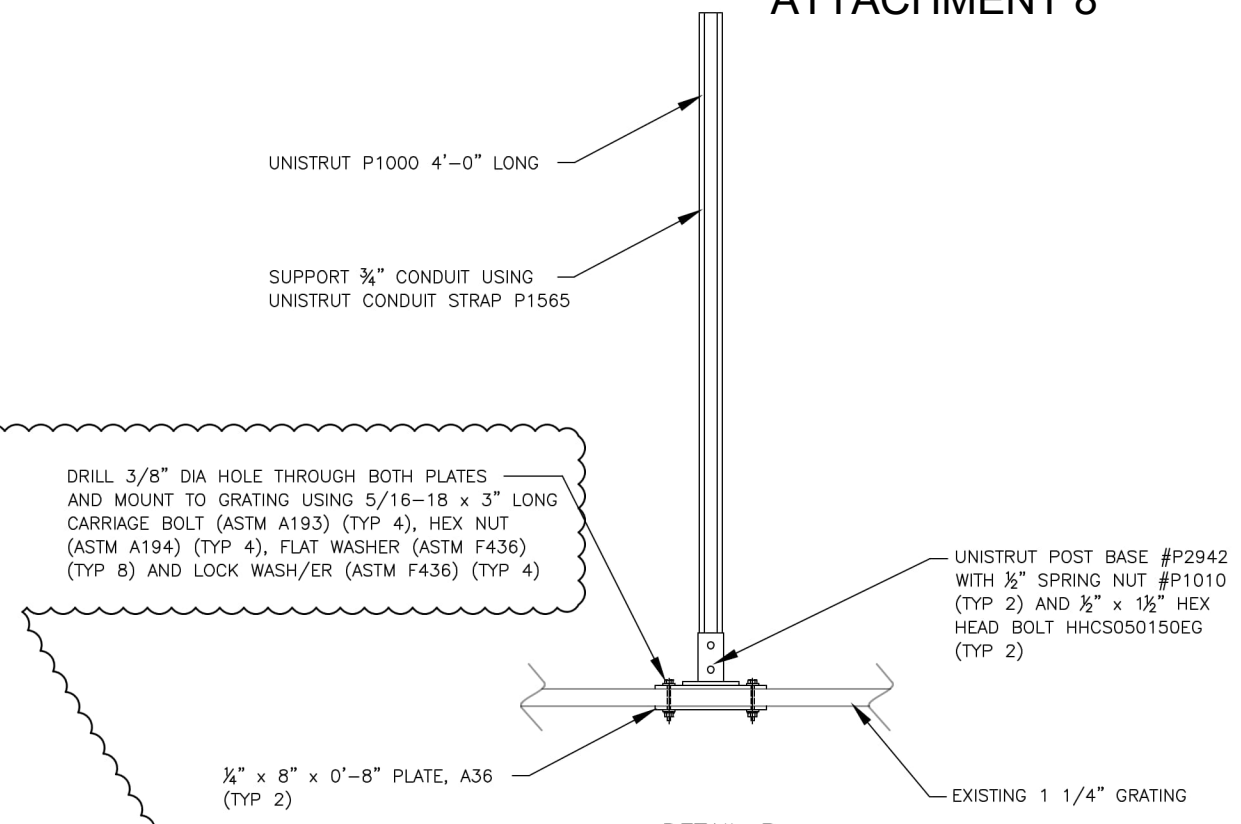


CONDUIT ROUTE METRO LRT RAIL FACILITY
SHORE POWER CABLE REEL RELOCATION PIT #4

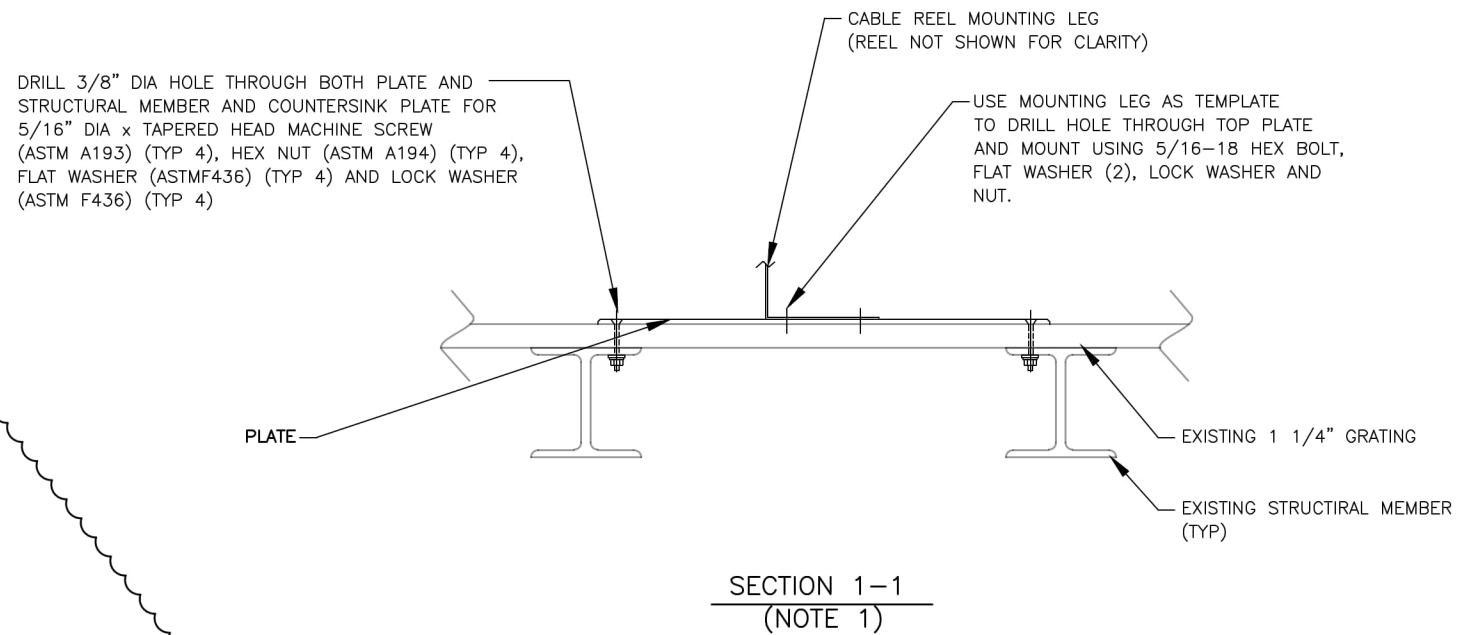
E-002
SHEET 3 OF 6



DETAIL A
TYPICAL PLAN VIEW CABLE REEL
(NOTE 1 & 2)



DETAIL B
TYPICAL PUSHBUTTON SWITCH STAND
NOTE 4, 5 & 6



SECTION 1-1
(NOTE 1)

- NOTES:
- CABLE REEL MAY BE POSITIONED ANY WHERE ON PLATE FOR EASY ACCESS CONDUIT ENTRY SO LONG AS IT DOES NOT EXTEND BEYOND PLATE OR INTERFERE WITH PLATE MOUNTING HARDWARE.
 - BEVEL PLATE EDGES.
 - COAT PLATE PER SACRT SPECIFIC SPECS & PROCEDURES.
 - EMERGENCY PUSHBUTTON SWITCH SHALL BE MOUNTED A MAXIMUM OF 5'-0" FROM REEL.
 - POSITION EMERGENCY PUSHBUTTON SWITCH SO THAT IT FACES TOWARDS RAIL CAR, SWITCH MAY BE ROTATED AS REQUIRED WITH DIRECTION FROM SACRT MAINTENANCE.
 - USE EMERGENCY PUSHBUTTON SWITCH AS TEMPLATE TO MOUNT TO P1000 USING STANDARD UNISTRUT HARDWARE (SPRING NUT, BOLT). MOUNT EMERGENCY SWITCH SIGN ABOVE OR BELOW SWITCH. USE STANDARD UNISTRUT HARDWARE AS REQUIRED. ALTERNATIVELY, PUSHBUTTON STAND MAY BE MOUNTED TO 2'x4' PLATE. THE USE OF BOTTOM PLATE IS NOT REQUIRED IN THIS MOUNT.
 - ALL HARDWARE IS EQUIVALENT UNLESS SPECIFICALLY NOTED.
 - CONTRACTOR SHALL VERIFY EXACT LOCATIONS AND DIMENSIONS IN THE FIELD PRIOR TO COMMENCING FABRICATION, ORDERING ANY MATERIALS, OR PERFORMING ANY WORK.
 - CONTRACTOR TO FOLLOW ALL SAFETY STANDARDS.
 - CONTRACTOR TO ENSURE ALL WORK IS PERFORMED BY QUALIFIED INDIVIDUALS.
 - CONTRACTOR TO ENSURE ALL WORK IS PERFORMED IN ACCORDANCE WITH ALL CODES.

REVISIONS				
MARK	DATE	DESCRIPTION	BY	CHKD
△				
△	01/09/2024	ADDENDUM #3 PER SITE VISIT	RP	JB/KW
△	11/11/2022	ISSUED FOR APPROVAL	RP	MM

SCALE: VERTICAL: N/A
HORIZONTAL: NOT TO SCALE

ORIGINAL SCALE IN INCHES
FOR REDUCED PLAN

PROJECT ENGINEER: WSP USA
DESIGNED BY: ROBERT PEKAREK
DRAWN BY: ROBERT PEKAREK
CHECKED BY: JARED BROCK/KEN WARDDRIP

DATE: 01/24
DATE: 01/24
DATE: 01/24

CI: XXXXXXX
FILE:
SUBMITTAL:
07/01/2022

CABLE REEL MOUNTING
METRO HEAVY & LRT RAIL FACILITY

E-003
SHEET 4 OF 6



TYPICAL PANEL
METRO HEAVY RAIL FACILITY



TYPICAL CABLE REEL
MHRF & LRT RAIL FACILITY



PANEL PIT 4
METRO LRT RAIL FACILITY

REVISIONS				
MARK	DATE	DESCRIPTION	BY	CHKD
△				
△				
△	11/11/2022	ISSUED FOR APPROVAL	RP	KW

SCALE: VERTICAL: N/A
HORIZONTAL: NOT TO SCALE

ORIGINAL SCALE IN INCHES
FOR REDUCED PLAN

PROJECT ENGINEER: WSP USA
DESIGNED BY: ROBERT PEKAREK
DRAWN BY: ROBERT PEKAREK
CHECKED BY: MICHAEL MACNIVEN



CI: XXXXXXX
FILE:
SUBMITTAL:
07/01/2022



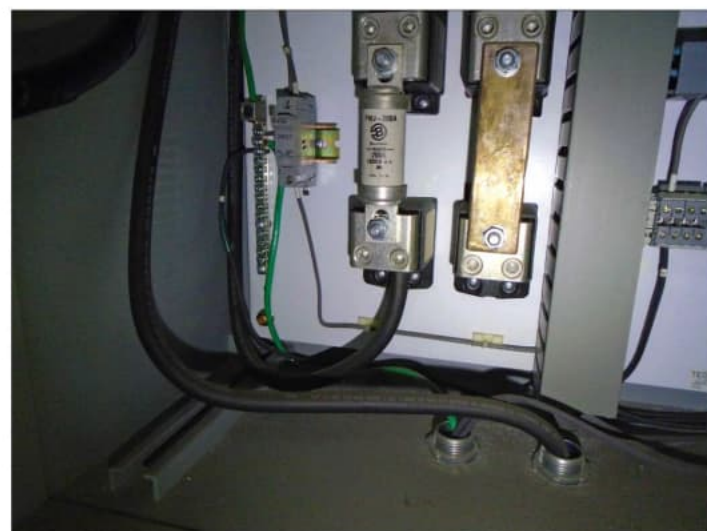
PICTURES OF EXISTING CABLE REEL LOCATIONS
SHORE POWER CABLE REEL RELOCATION LOCATIONS
MHRF & LRT RAIL FACILITY



TYPICAL TOP LEFT OF PANEL



TYPICAL TOP MIDDLE/RIGHT OF PANEL



TYPICAL BOTTOM LEFT OF PANEL



TYPICAL MIDDLE RIGHT OF PANEL



TYPICAL BOTTOM RIGHT OF PANEL

REVISIONS				
MARK	DATE	DESCRIPTION	BY	CHKD
△				
△				
△	11/11/2022	ISSUED FOR REVIEW	RP	KW

SCALE: VERTICAL: N/A
 HORIZONTAL: NOT TO SCALE
 ORIGINAL SCALE IN INCHES
 FOR REDUCED PLAN

PROJECT ENGINEER: WSP USA
 DATE:
 DESIGNER BY: ROBERT PEKAREK
 DRAWN BY: ROBERT PEKAREK
 CHECKED BY: MICHAEL MACNIVEN



CI: XXXXXXX
 FILE:
 SUBMITTAL:
 07/01/2022



PICTURES OF PANEL INTERNALS
 SHORE POWER CABLE REEL RELOCATION
 MHRF & LRT RAIL FACILITY